

5369A11

144-531-001-0002  
10.9900 AC

# Harris Central Appraisal District



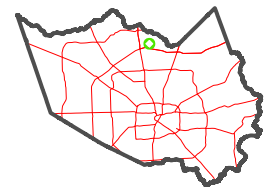
0 45 90 180 Feet

PUBLICATION DATE:  
12/30/2023

Geospatial or map data maintained by the Harris Central Appraisal District is for informational purposes and may not have been prepared for or be suitable for legal, engineering, or surveying purposes. It does not represent an on-the-ground survey and only represents the approximate location of property boundaries.



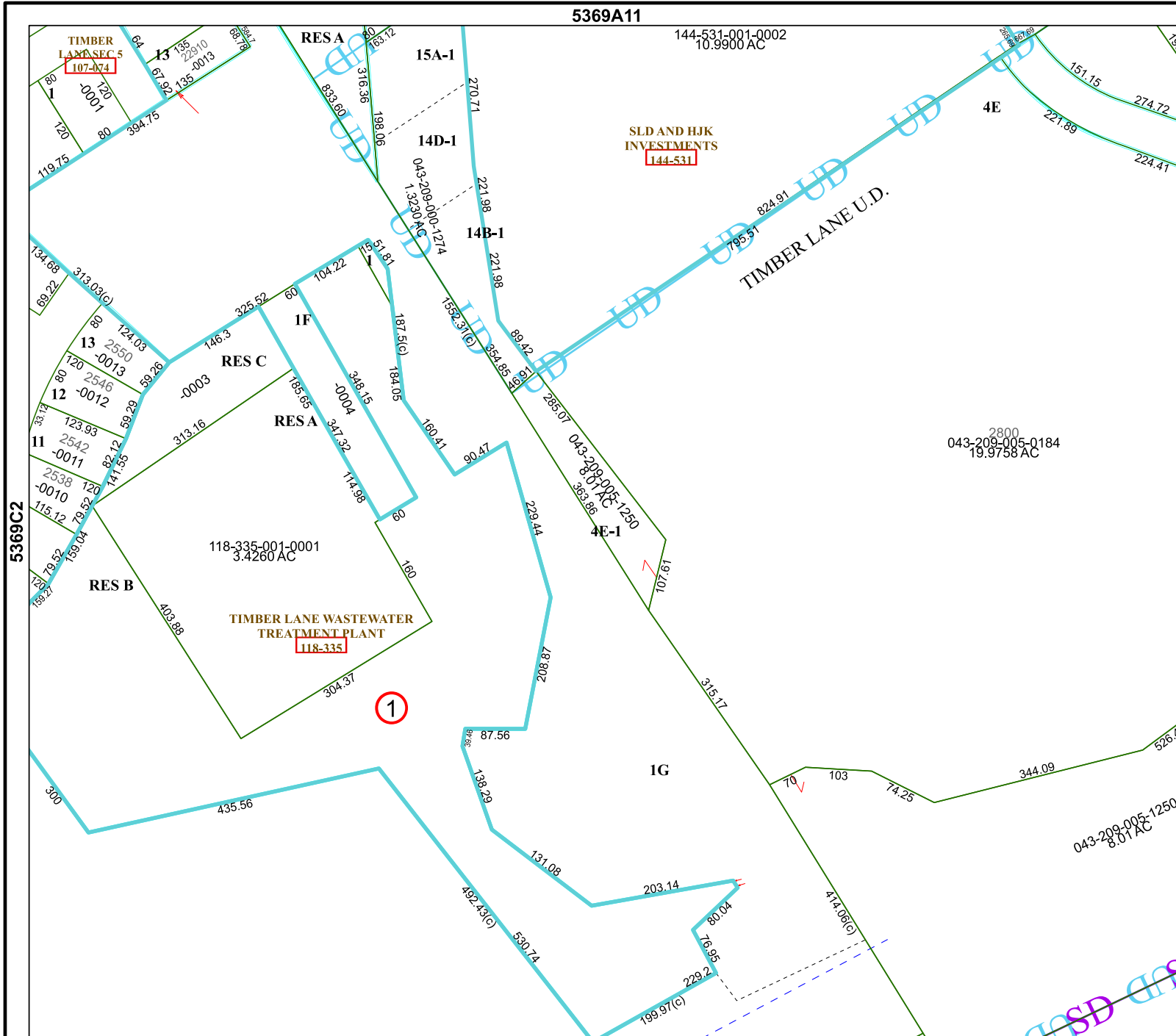
MAP LOCATION



## FACET 5369C3

9	10	11	12	9
1	2	3	4	1
5	6	7	8	5

5369C7



5369C4

5369C2