

Harris Central Appraisal District

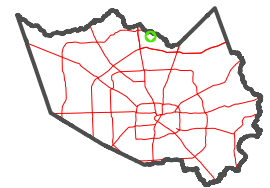


0 45 90 180 Feet

PUBLICATION DATE:
12/30/2023

Geospatial or map data maintained by the Harris Central Appraisal District is for informational purposes and may not have been prepared for or be suitable for legal, engineering, or surveying purposes. It does not represent an on-the-ground survey and only represents the approximate location of property boundaries.

MAP LOCATION



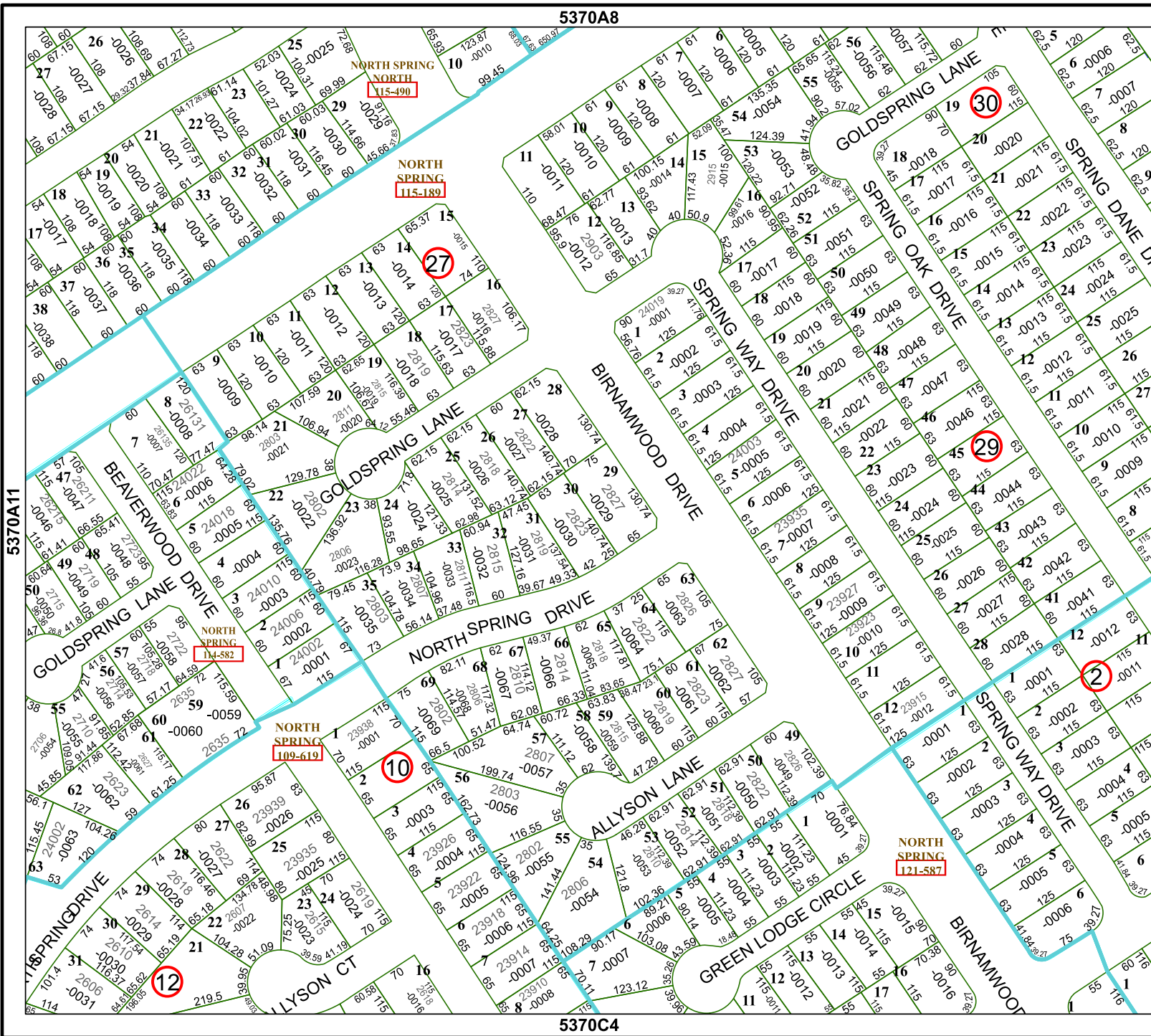
FACET

5370A12

6	7	8	5	6
10	11	12	9	10
2	3	4	1	2

5370A8

5370C4



NORTH SPRING
NORTH
115-490

NORTH SPRING
115-189

NORTH SPRING
114-582

NORTH SPRING
109-619

NORTH SPRING
121-587