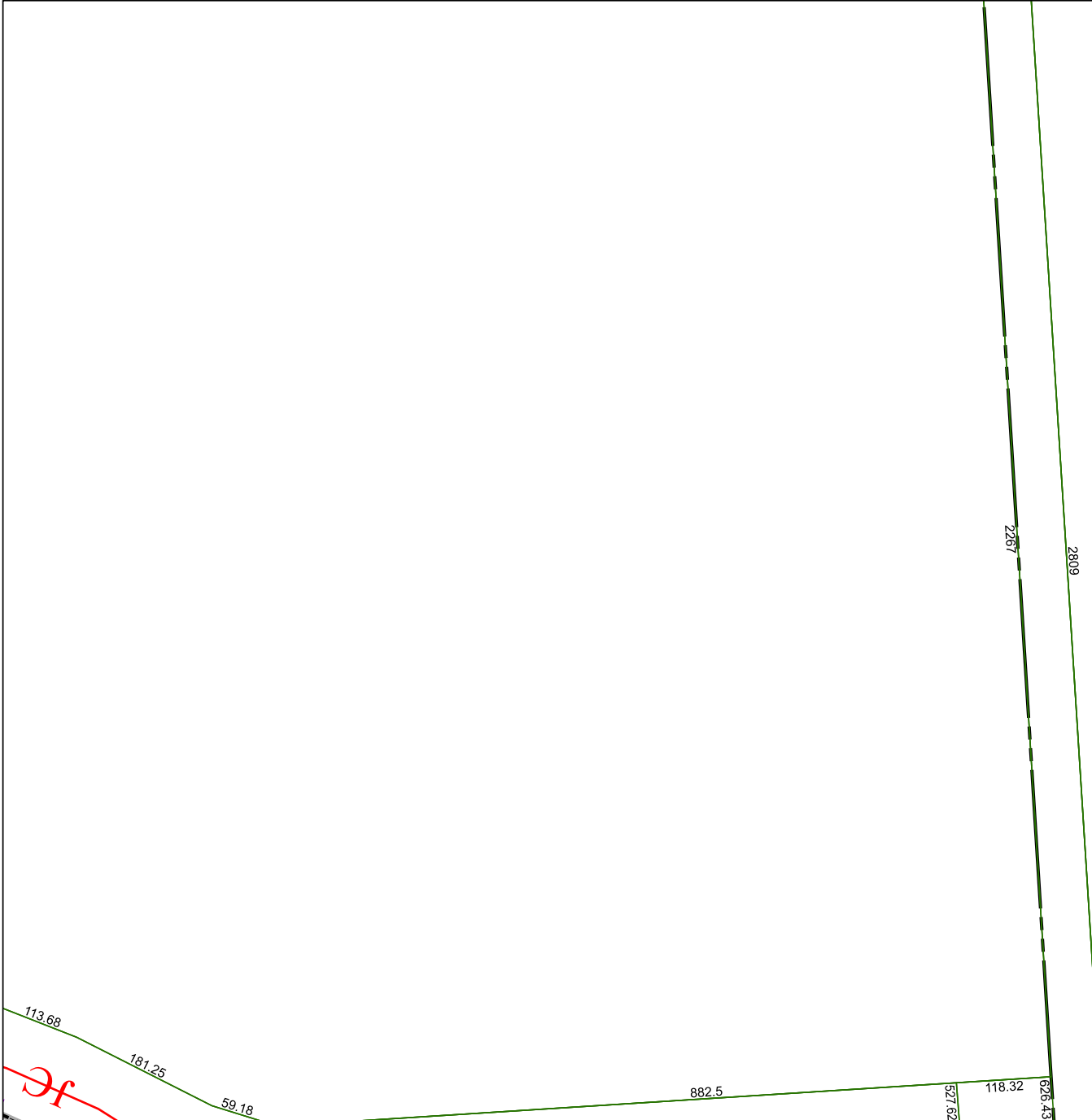


5450A9

5350D4



5450C5

Harris Central Appraisal District



0 45 90 180
Feet

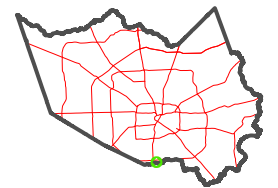
PUBLICATION DATE:
4/22/2024

Geospatial or map data maintained by the Harris Central Appraisal District is for informational purposes and may **not** have been prepared for or be suitable for legal, engineering, or surveying purposes. It does **not** represent an on-the-ground survey and only represents the approximate location of property boundaries.



5450C2

MAP LOCATION



FACET 5450C1

11	12	9	10	11
3	4	1	2	3
7	8	5	6	7