

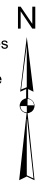
Harris Central Appraisal District



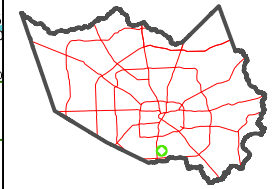
0 45 90 180 Feet

PUBLICATION DATE: 5/6/2024

Geospatial or map data maintained by the Harris Central Appraisal District is for informational purposes and may not be suitable for legal, engineering, or surveying purposes. It does not represent an on-the-ground survey and only represents the approximate location of property boundaries.



MAP LOCATION

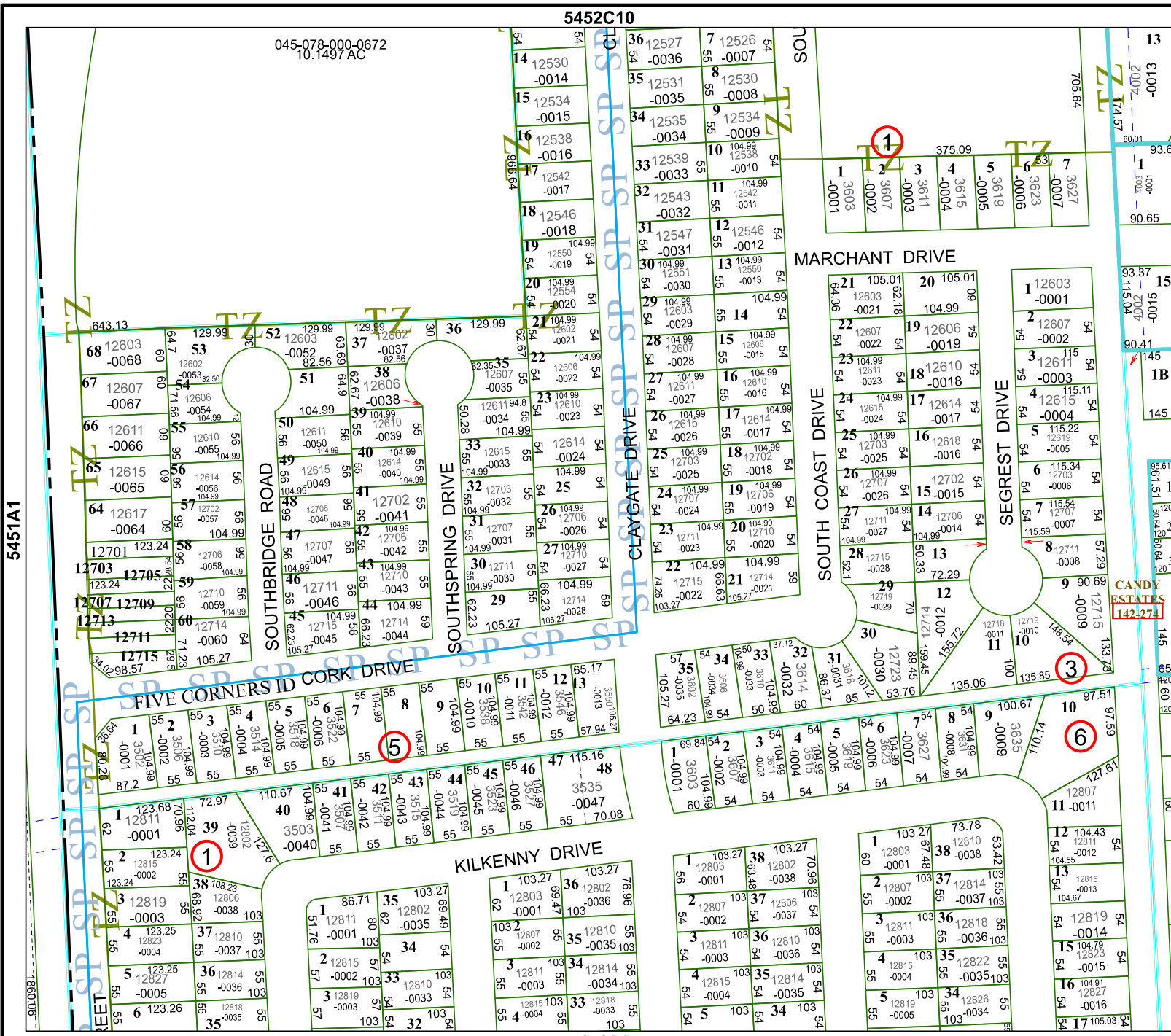


FACET 5451A2

12	9	10	11	12
4	1	2	3	4
8	5	6	7	8

5452C10

045-078-000-0672
10.1497 AC



5451A6

5451A1

5451A3

CANDY ESTATES
142-274