

# Harris Central Appraisal District

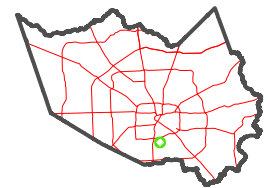


0 45 90 180 Feet

PUBLICATION DATE: 4/8/2024

Geospatial or map data maintained by the Harris Central Appraisal District is for informational purposes and may not be suitable for legal, engineering, or surveying purposes. It does not represent an on-the-ground survey and only represents the approximate location of property boundaries.

MAP LOCATION



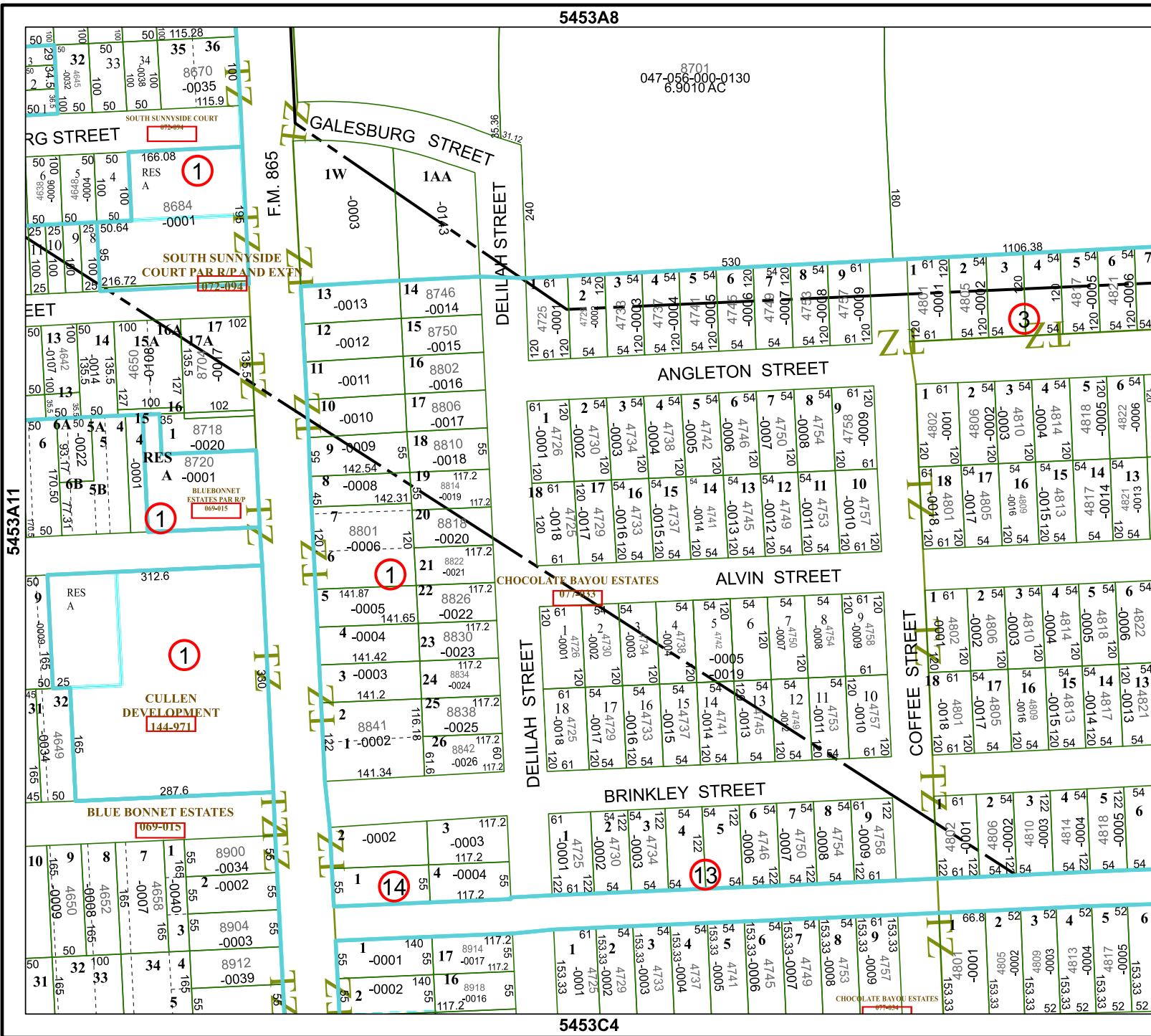
## FACET 5453A12

6	7	8	5	6
10	11	12	9	10
2	3	4	1	2

5453A8

8701  
047-056-000-0130  
6.9010 AC

5453C4



5453A11

5453B5