

Harris Central Appraisal District

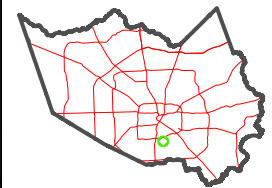


0 45 90 180 Feet

PUBLICATION DATE: 2/13/2024

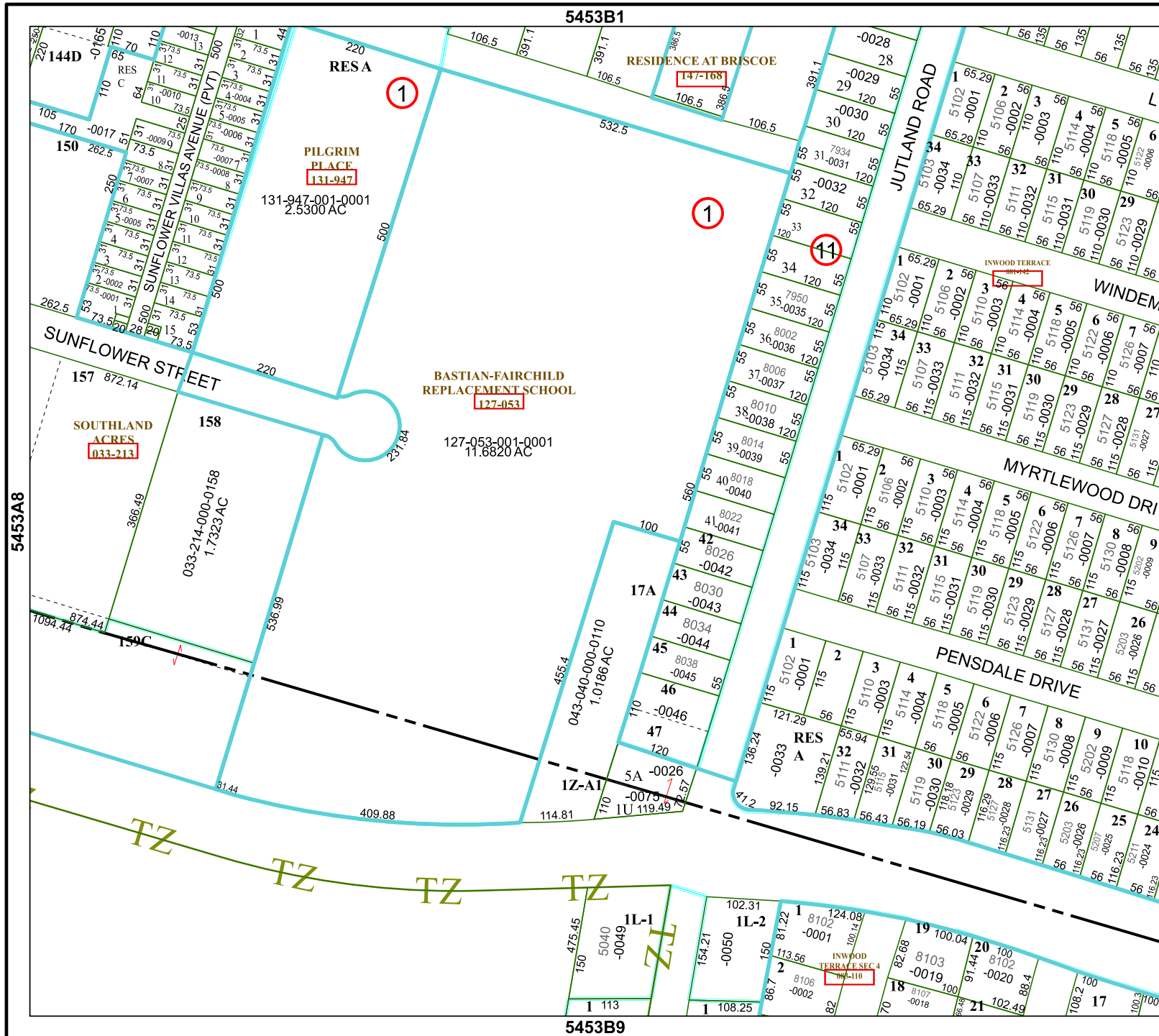
Geospatial or map data maintained by the Harris Central Appraisal District is for informational purposes and may not have been prepared for or be suitable for legal, engineering, or surveying purposes. It does not represent an on-the-ground survey and only represents the approximate location of property boundaries.

MAP LOCATION



FACET 5453B5

3	4	1	2	3
7	8	5	6	7
11	12	9	10	11



5453B1

5453B9

5453A8

5453B6

TZ TZ TZ TZ

ZJ