

Harris Central Appraisal District

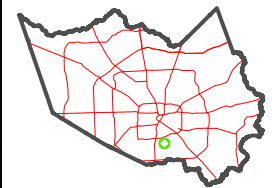


0 50 100 200 Feet

PUBLICATION DATE:
12/15/2025

Geospatial or map data maintained by the Harris Central Appraisal District is for informational purposes and may not have been prepared for or be suitable for legal, engineering, or surveying purposes. It does not represent an on-the-ground survey and only represents the approximate location of property boundaries.

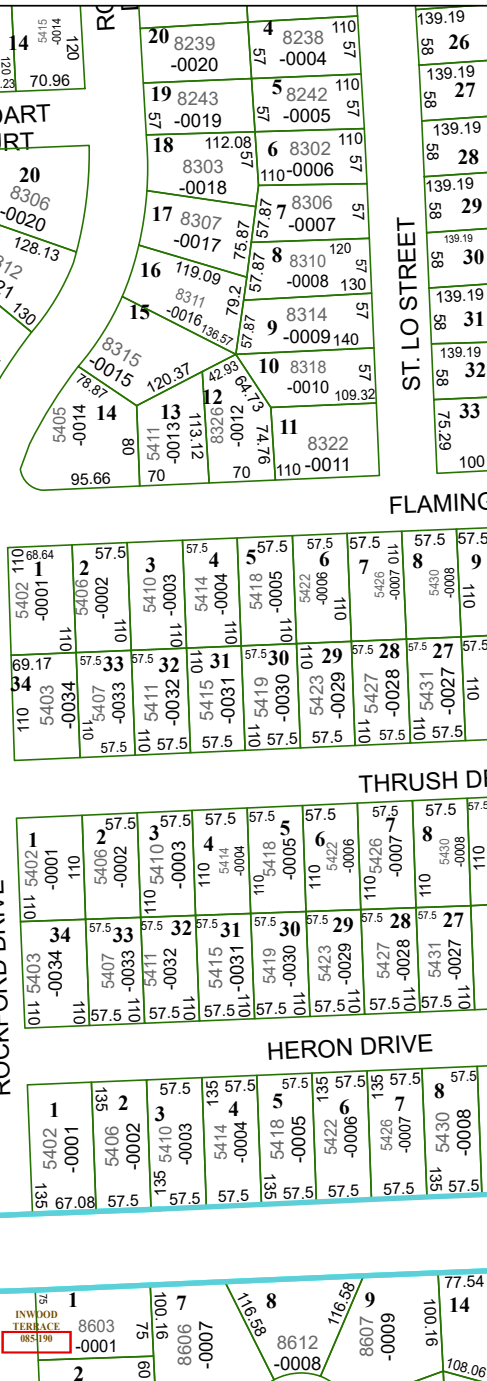
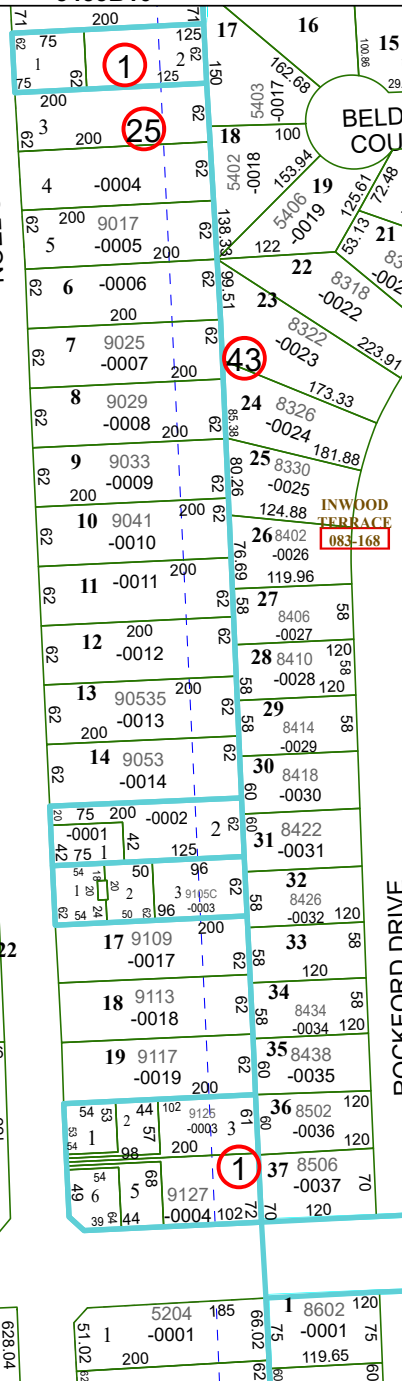
MAP LOCATION



FACET 5453D2

12	9	10	11	12
4	1	2	3	4
8	5	6	7	8

5453B10



5453D6