

# Harris Central Appraisal District

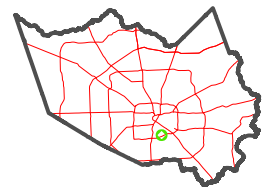


0 45 90 180 Feet

PUBLICATION DATE:  
5/11/2023

Geospatial or map data maintained by the Harris Central Appraisal District is for informational purposes and may not have been prepared for or be suitable for legal, engineering, or surveying purposes. It does not represent an on-the-ground survey and only represents the approximate location of property boundaries.

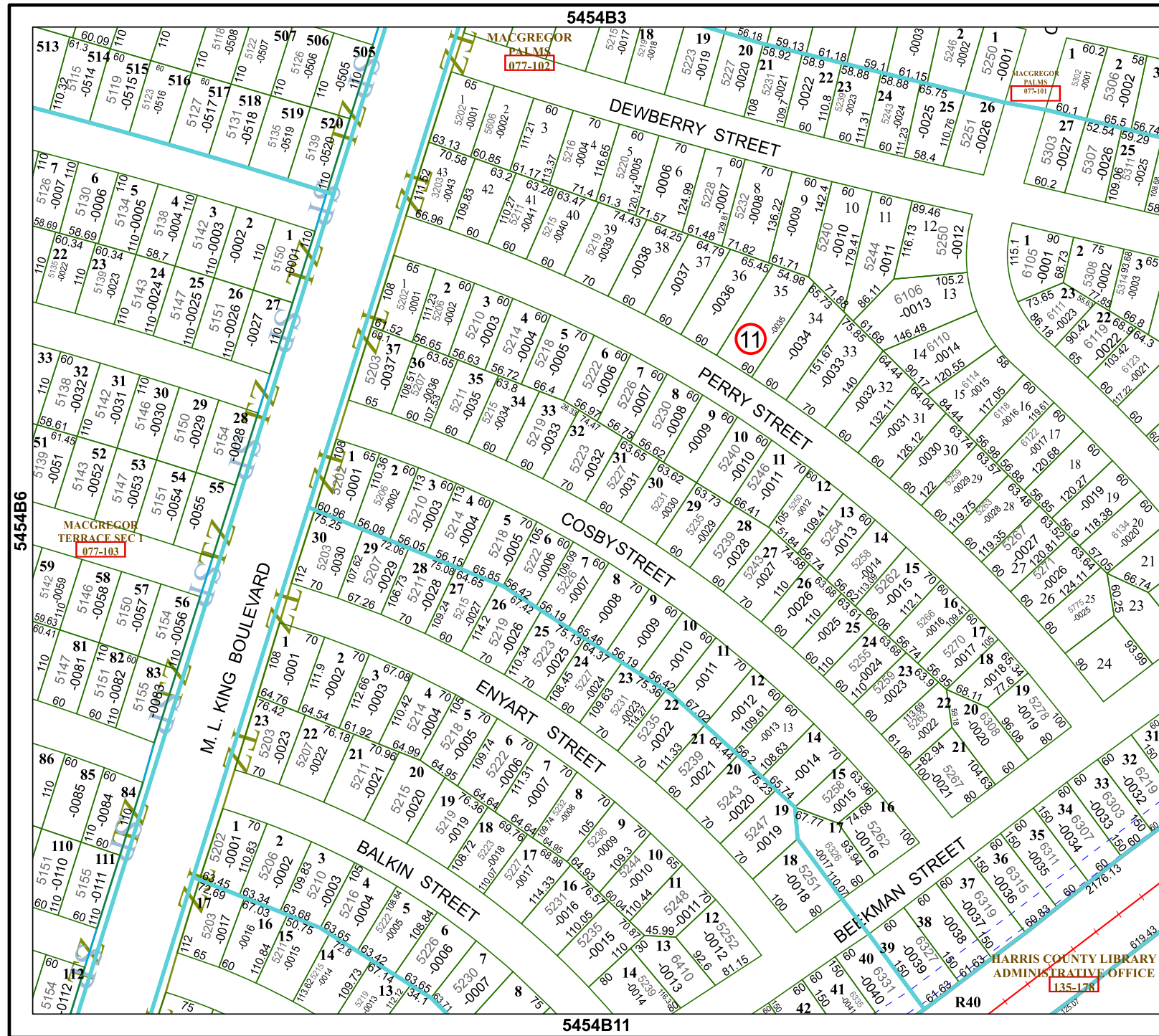
MAP LOCATION



## FACET

### 5454B7

1	2	3	4	1
5	6	7	8	5
9	10	11	12	9



5454B3

MACGREGOR PALMS  
077-102

MACGREGOR PALMS  
077-101

5454B6

MACGREGOR TERRACE SEC 1  
077-103

5454B8

5454B11

HARRIS COUNTY LIBRARY  
ADMINISTRATIVE OFFICE  
135-178

R40