

Harris Central Appraisal District

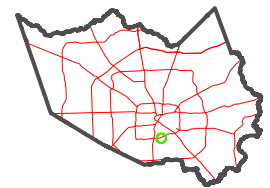


0 45 90 180 Feet

PUBLICATION DATE: 1/6/2023

Geospatial or map data maintained by the Harris Central Appraisal District is for informational purposes and may not have been prepared for or be suitable for legal, engineering, or surveying purposes. It does not represent an on-the-ground survey and only represents the approximate location of property boundaries.

MAP LOCATION

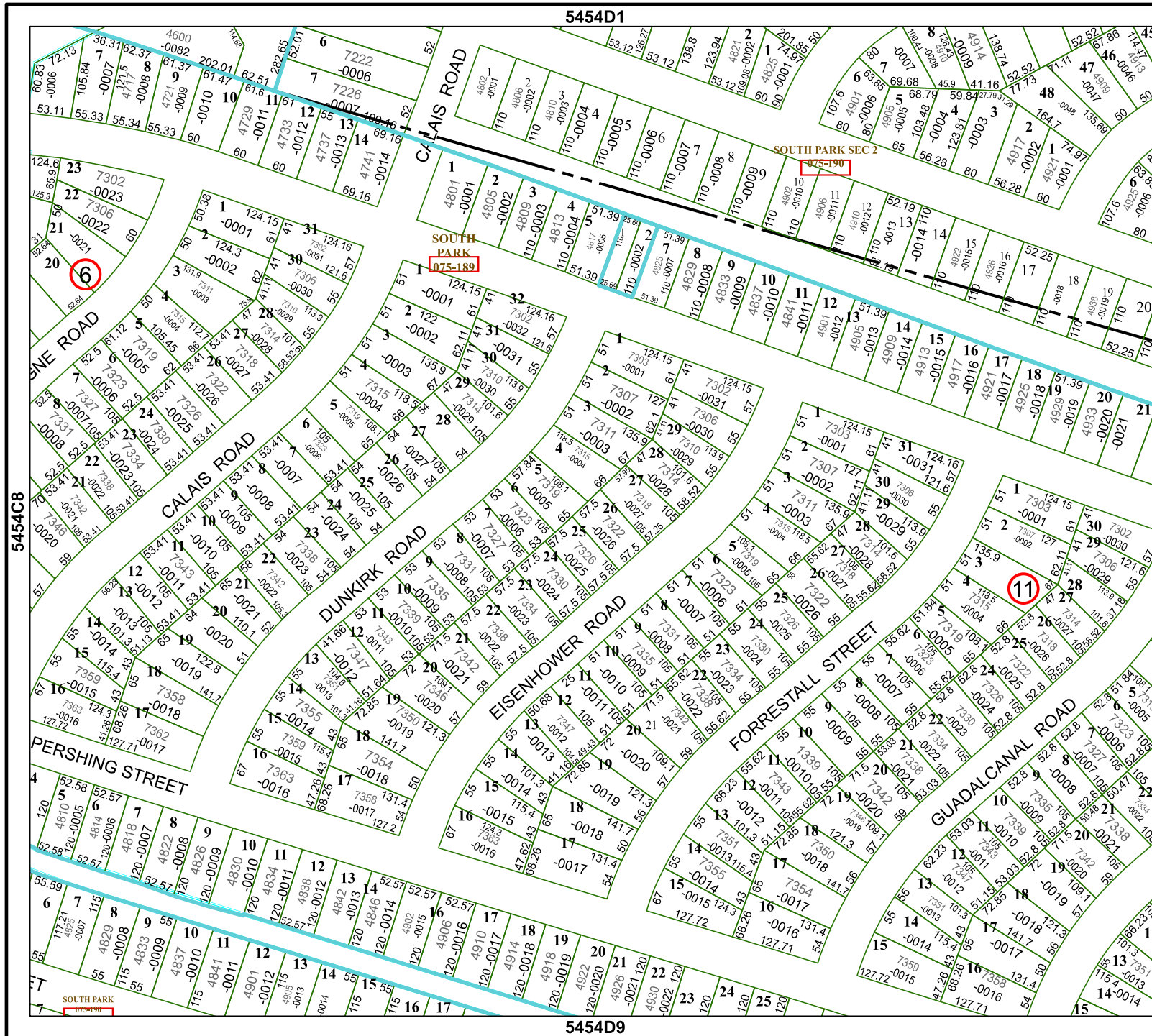


FACET 5454D5

3	4	1	2	3
7	8	5	6	7
11	12	9	10	11

5454D1

5454D9



5454C8

5454D6

SOUTH PARK 1075-189

SOUTH PARK SEC 2 1475-190

SOUTH PARK 1075-189

11

6