

Harris Central Appraisal District

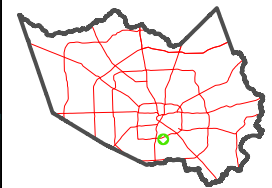


0 45 90 180 Feet

PUBLICATION DATE: 1/6/2023

Geospatial or map data maintained by the Harris Central Appraisal District is for informational purposes and may not have been prepared for or be suitable for legal, engineering, or surveying purposes. It does not represent an on-the-ground survey and only represents the approximate location of property boundaries.

MAP LOCATION



FACET 5454D9

7	8	5	6	7
11	12	9	10	11
3	4	1	2	3

5454D5

SOUTH PARK

075-189

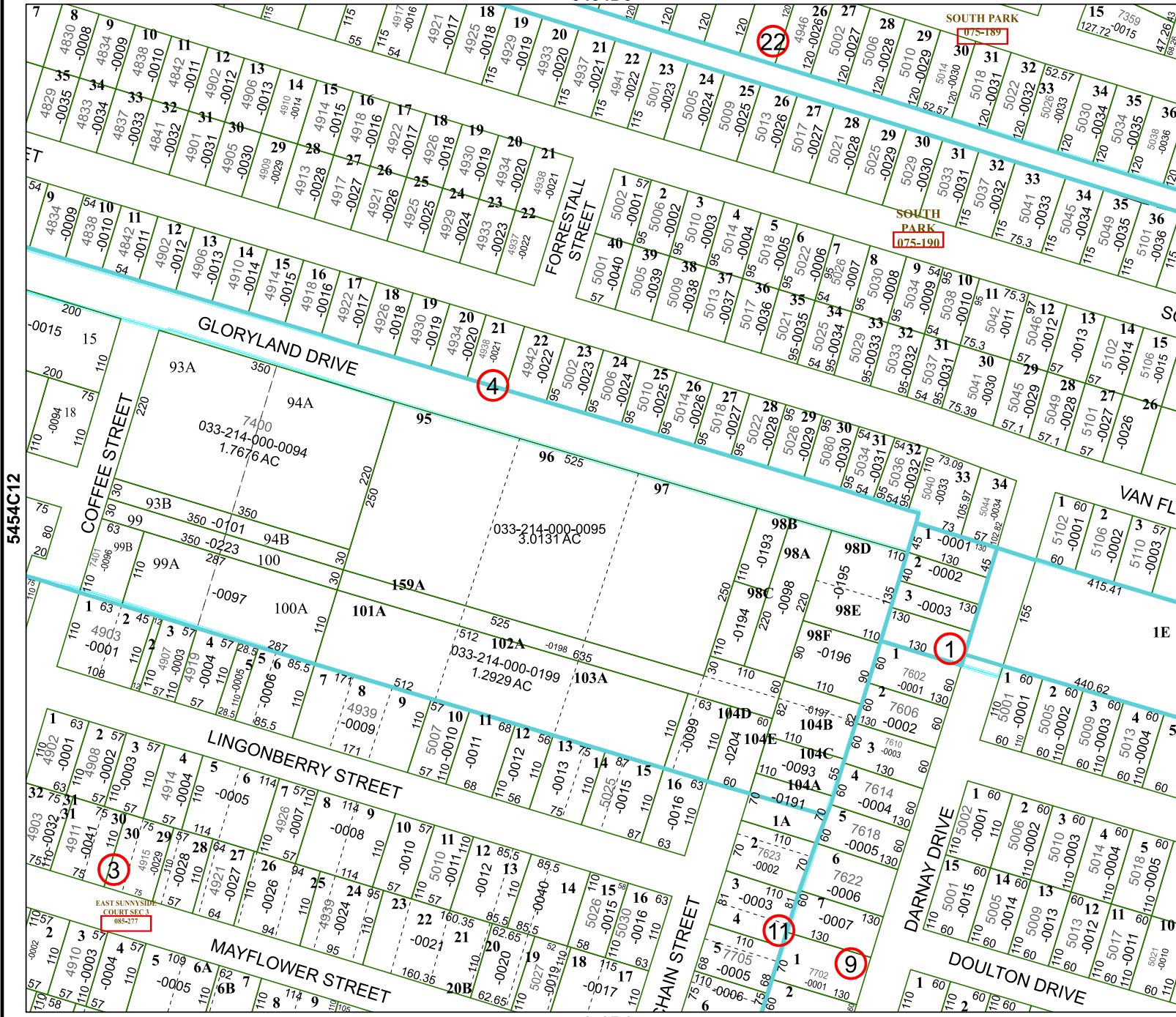
SOUTH PARK

075-190

5453B1

5454C12

5454D10



EAST SUNNYSIDE COURT SEC 3 085-277

