

Harris Central Appraisal District

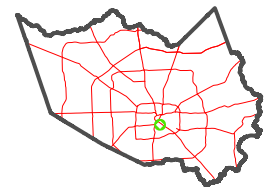


0 45 90 180 Feet

PUBLICATION DATE:
3/11/2024

Geospatial or map data maintained by the Harris Central Appraisal District is for informational purposes and may not have been prepared for or be suitable for legal, engineering, or surveying purposes. It does not represent an on-the-ground survey and only represents the approximate location of property boundaries.

MAP LOCATION

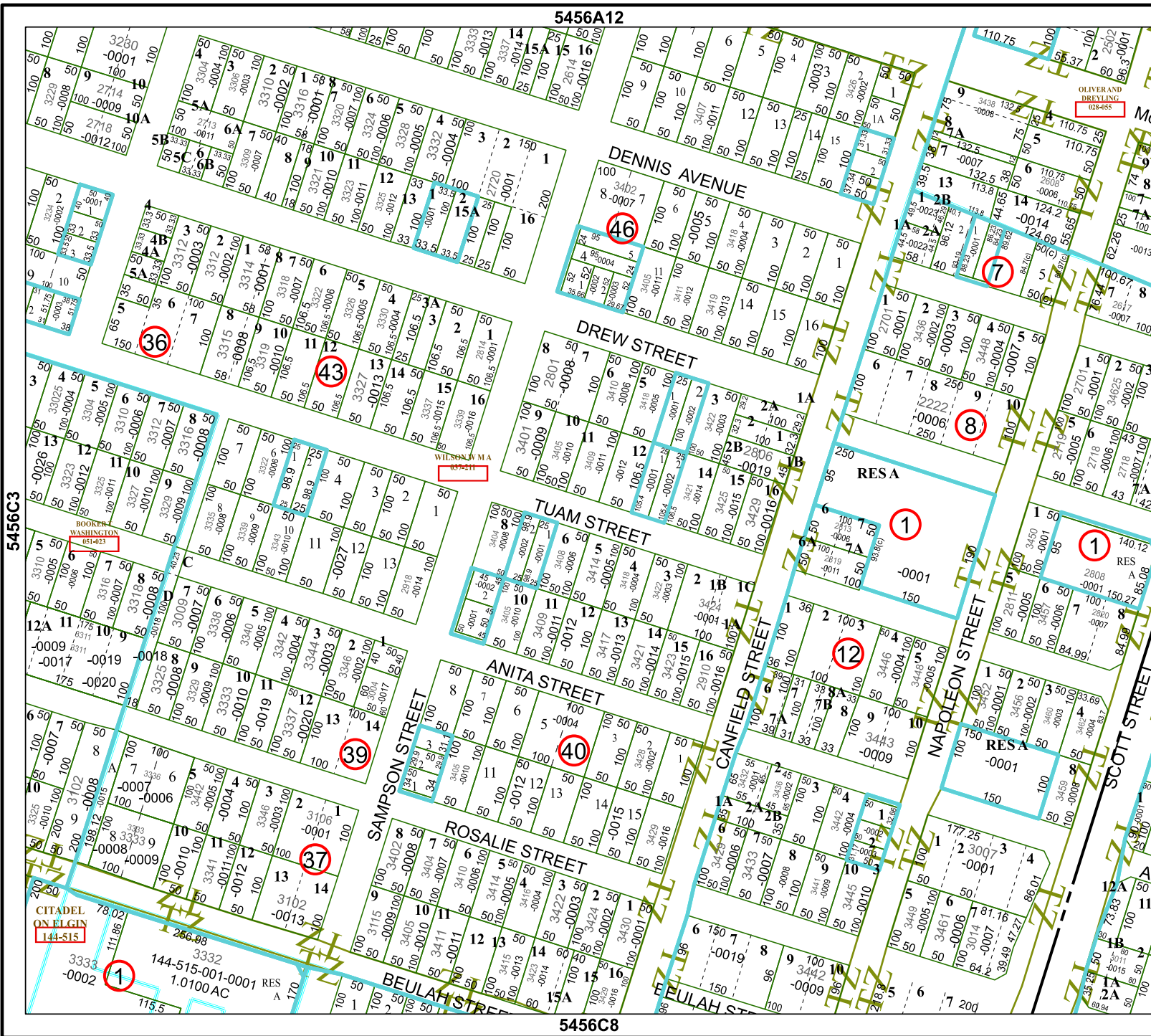


FACET 5456C4

10	11	12	9	10
2	3	4	1	2
6	7	8	5	6

5456A12

5456C8



5456C3

5456D1



CITADEL ON ELGIN
144-515

WILSON BLVD
68-5211

OLIVER AND DREYFLING
62-6455

RES A 170
144-515-001-0001
1.0100 AC