

Harris Central Appraisal District



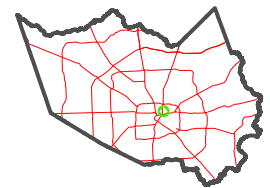
0 45 90 180 Feet

PUBLICATION DATE: 4/8/2024

Geospatial or map data maintained by the Harris Central Appraisal District is for informational purposes and may not have been prepared for or be suitable for legal, engineering, or surveying purposes. It does not represent an on-the-ground survey and only represents the approximate location of property boundaries.



MAP LOCATION

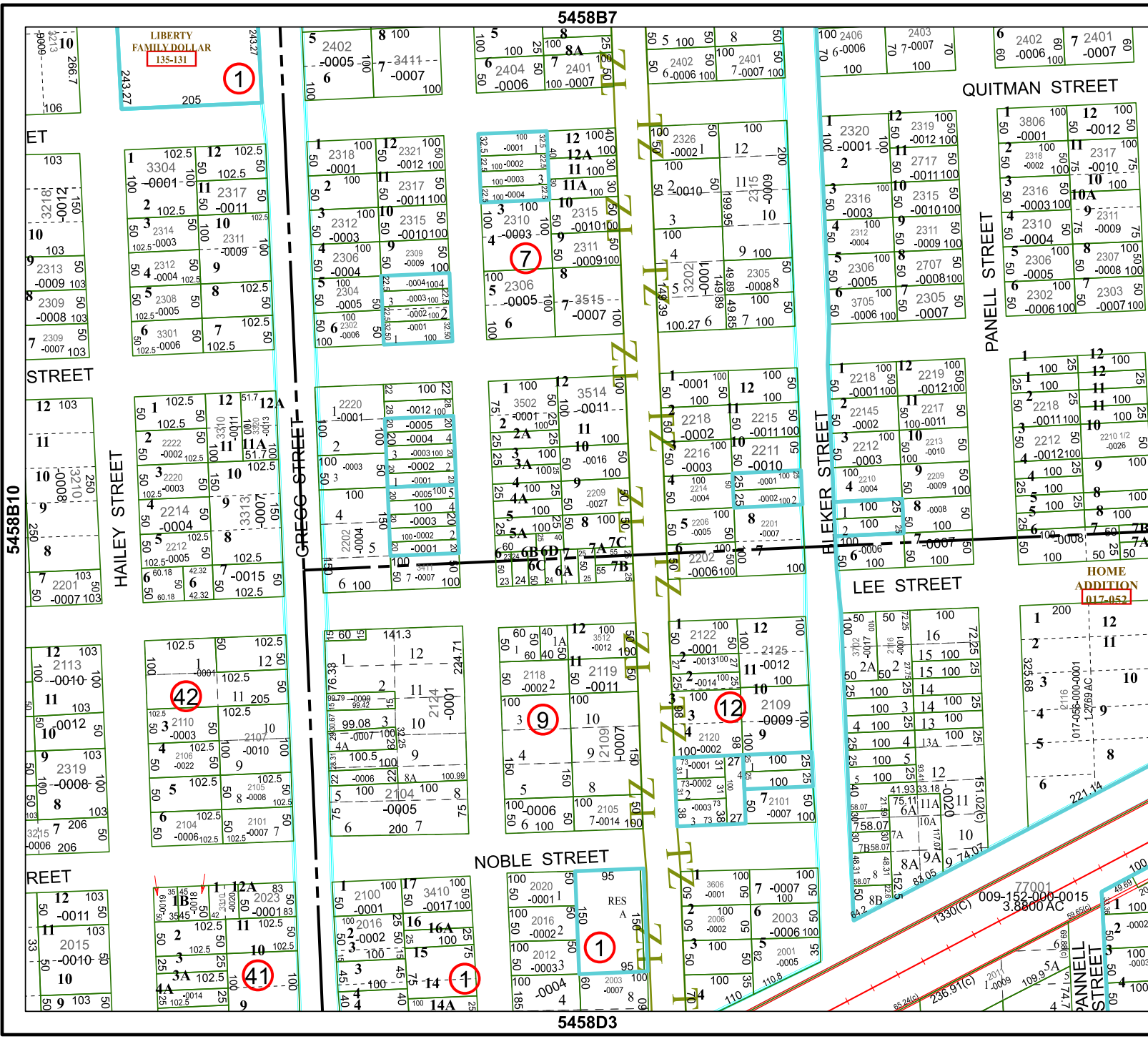


FACET 5458B11

5	6	7	8	5
9	10	11	12	9
1	2	3	4	1

5458B7

5458D3



LIBERTY FAMILY DOLLAR 135-131

HOME ADDITION 017-052

RES A

009-152-000-0015 3.8800 AC