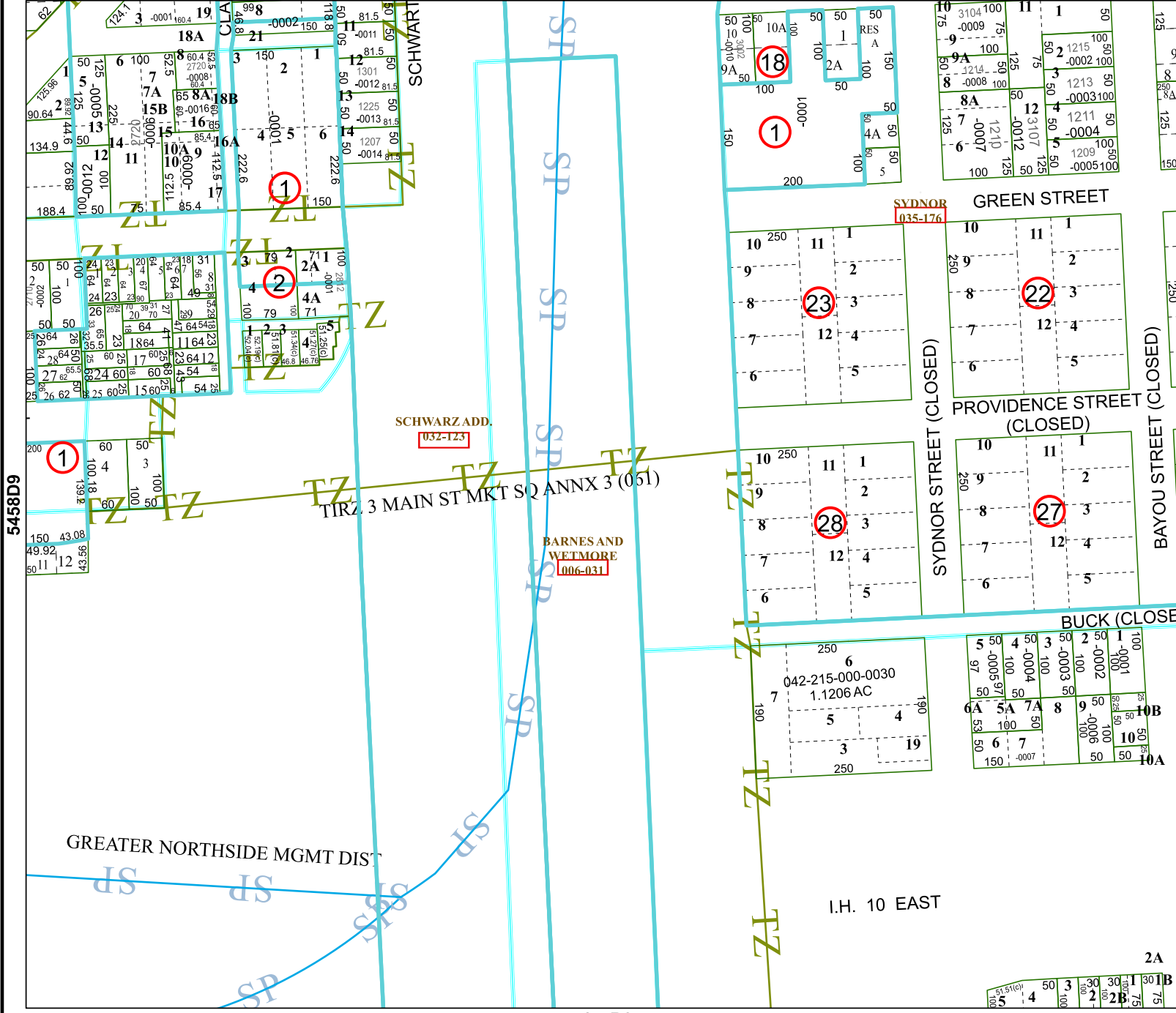


5458D6



5458D9

5457B2

Harris Central Appraisal District

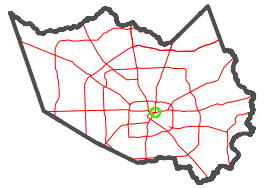


0 45 90 180 Feet

PUBLICATION DATE: 3/25/2024

Geospatial or map data maintained by the Harris Central Appraisal District is for informational purposes and may not have been prepared for or be suitable for legal, engineering, or surveying purposes. It does not represent an on-the-ground survey and only represents the approximate location of property boundaries.

MAP LOCATION



FACET 5458D10

8	5	6	7	8
12	9	10	11	12
4	1	2	3	4

2A
10B
75
30
30
100
51.51(e)
5