

Harris Central Appraisal District

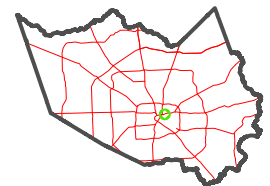


0 45 90 180 Feet

PUBLICATION DATE:
5/30/2024

Geospatial or map data maintained by the Harris Central Appraisal District is for informational purposes and may not be suitable for legal, engineering, or surveying purposes. It does not represent an on-the-ground survey and only represents the approximate location of property boundaries.

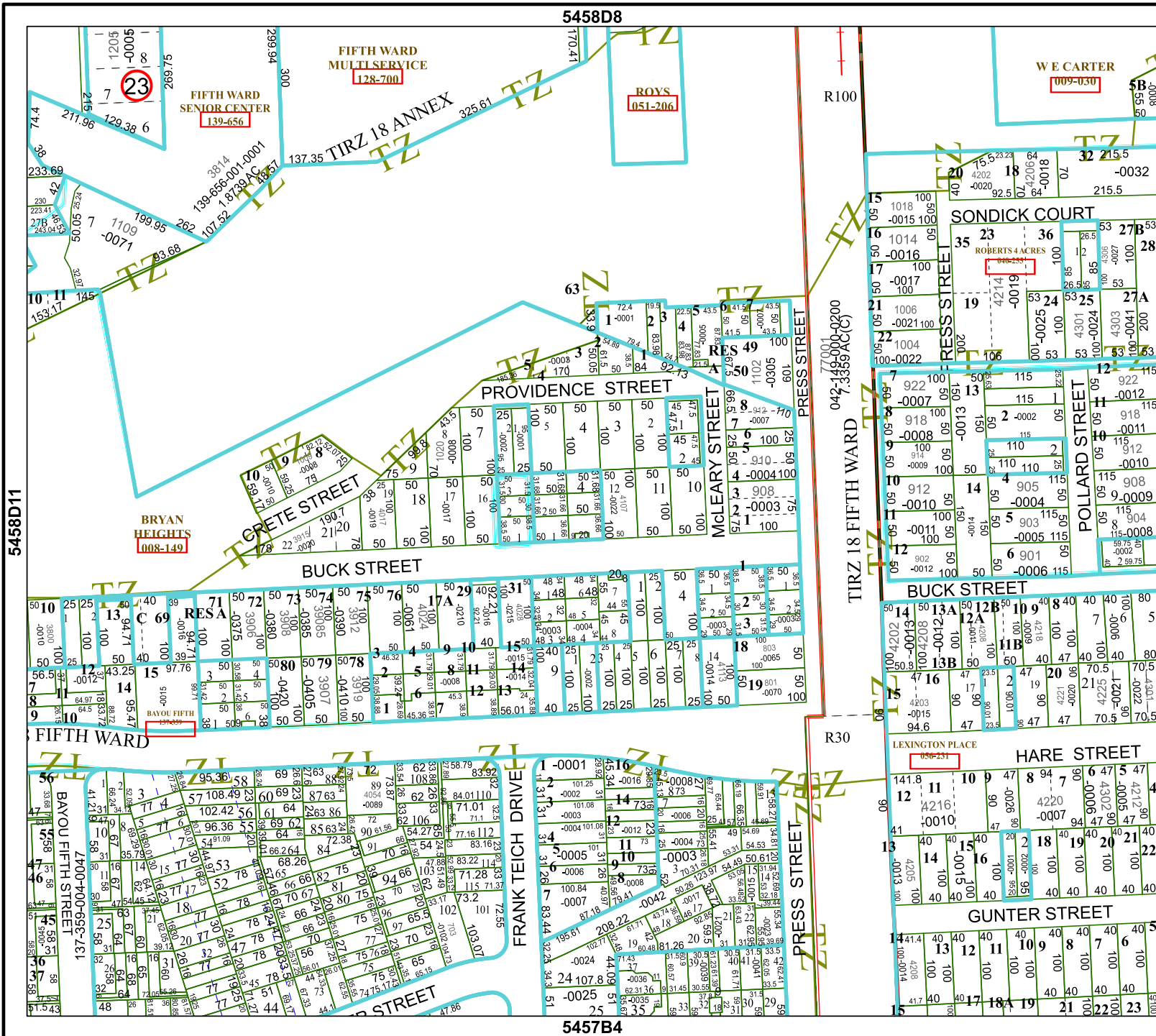
MAP LOCATION



FACET

5458D12

6	7	8	5	6
10	11	12	9	10
2	3	4	1	2



5458D11

5458D8

5457B4

5558C6