

# Harris Central Appraisal District

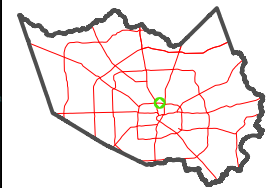


0 45 90 180 Feet

PUBLICATION DATE: 12/30/2023

Geospatial or map data maintained by the Harris Central Appraisal District is for informational purposes and may not have been prepared for or be suitable for legal, engineering, or surveying purposes. It does not represent an on-the-ground survey and only represents the approximate location of property boundaries.

MAP LOCATION

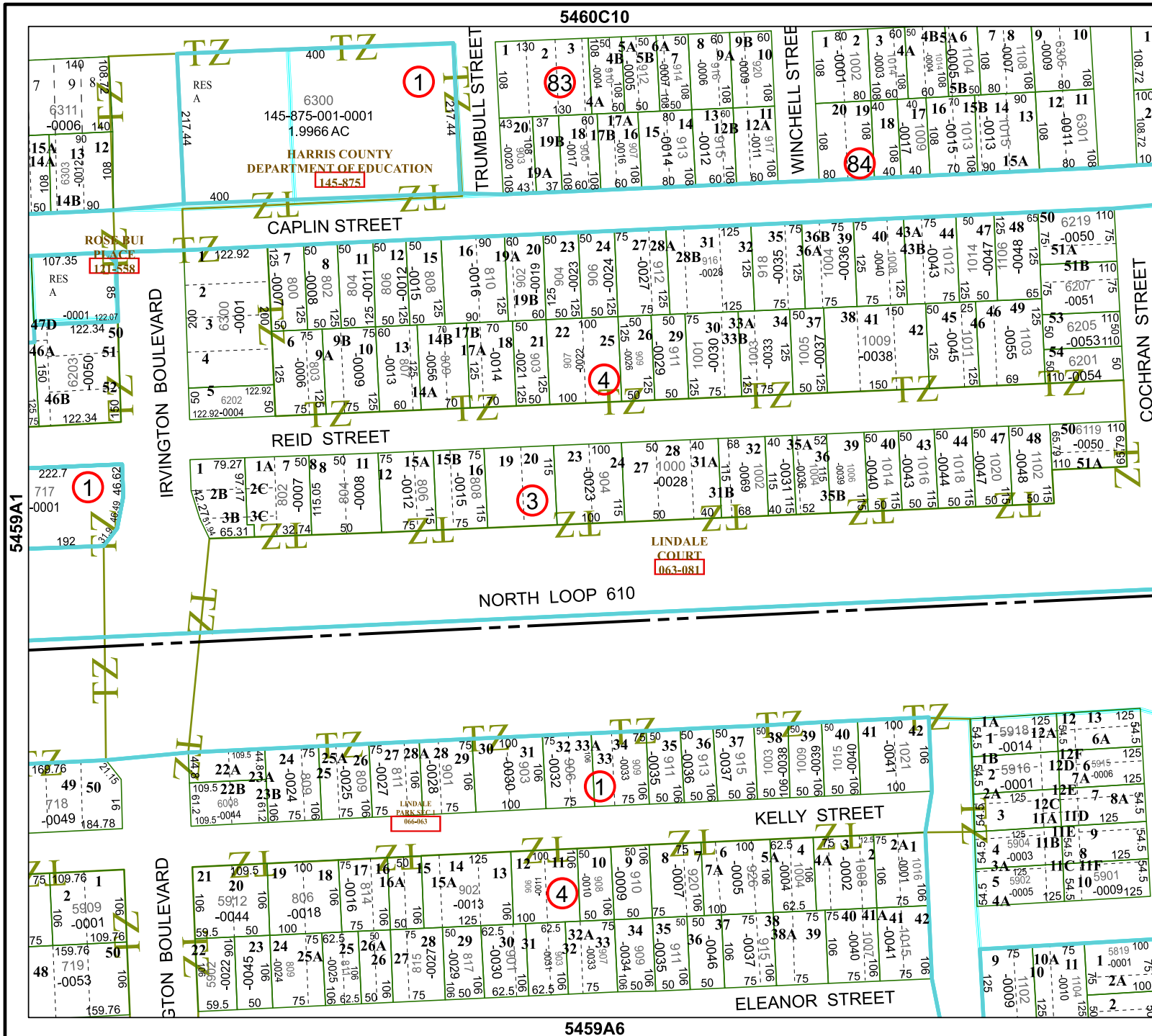


## FACET 5459A2

12	9	10	11	12
4	1	2	3	4
8	5	6	7	8

5460C10

5459A6



RES A  
6300  
145-875-001-0001  
1.9966 AC  
HARRIS COUNTY  
DEPARTMENT OF EDUCATION  
145-875

LINDALE COURT  
063-081

5459A1

5459A3