

# Harris Central Appraisal District

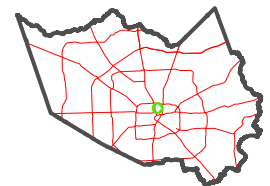


0 45 90 180 Feet

PUBLICATION DATE:  
5/22/2023

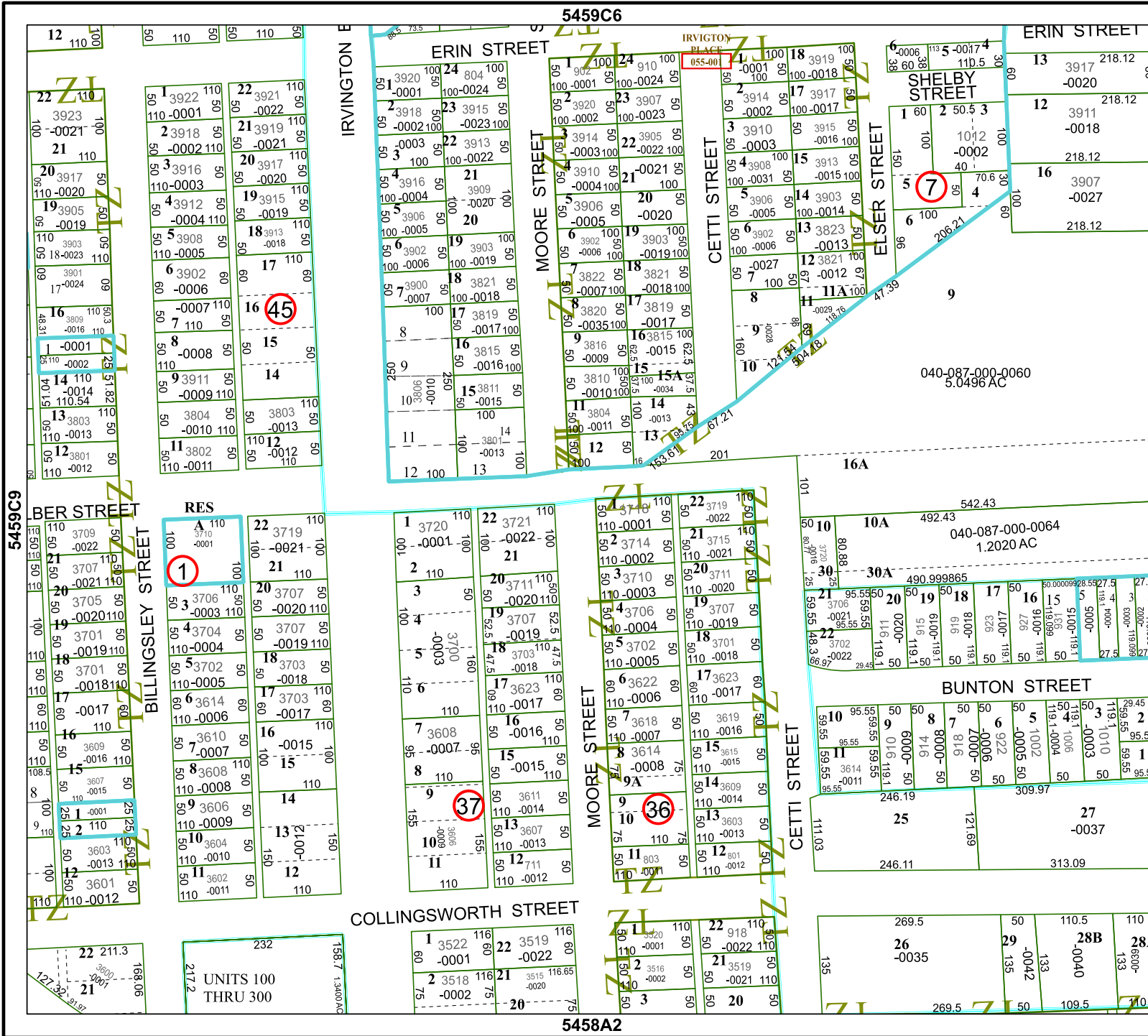
Geospatial or map data maintained by the Harris Central Appraisal District is for informational purposes and may not have been prepared for or be suitable for legal, engineering, or surveying purposes. It does not represent an on-the-ground survey and only represents the approximate location of property boundaries.

**MAP LOCATION**



## FACET 5459C10

|    |   |    |    |    |
|----|---|----|----|----|
| 8  | 5 | 6  | 7  | 8  |
| 12 | 9 | 10 | 11 | 12 |
| 4  | 1 | 2  | 3  | 4  |



5459C6

5459C11

5458A2

UNITS 100  
THRU 300

5459C9