

Harris Central Appraisal District

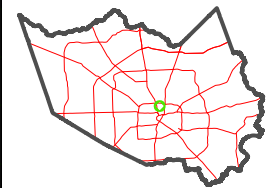


0 45 90 180 Feet

PUBLICATION DATE: 3/25/2024

Geospatial or map data maintained by the Harris Central Appraisal District is for informational purposes and may not have been prepared for or be suitable for legal, engineering, or surveying purposes. It does not represent an on-the-ground survey and only represents the approximate location of property boundaries.

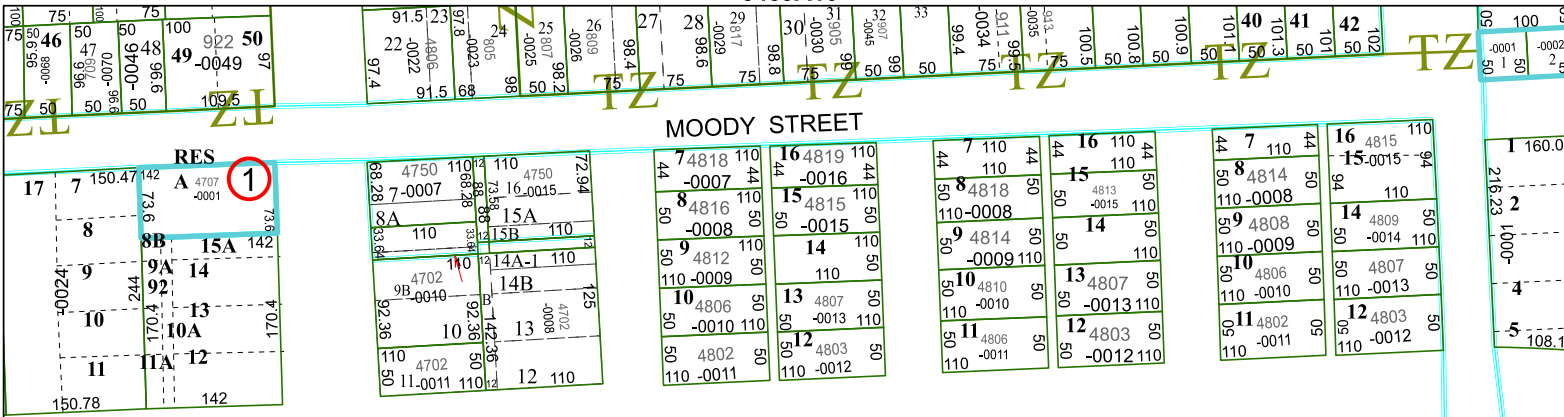
MAP LOCATION



FACET 5459C2

12	9	10	11	12
4	1	2	3	4
8	5	6	7	8

5459A10



CAVALCADE STREET

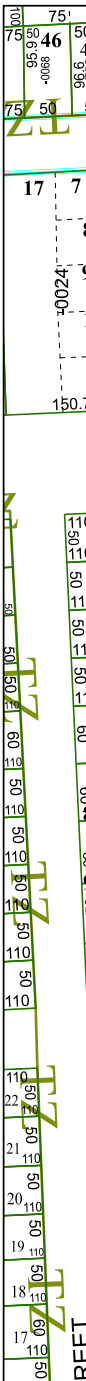
IRVINGTON BOULEVARD

ROBERTSON STREET

5459C6



5459C1



5459C3

