

# Harris Central Appraisal District



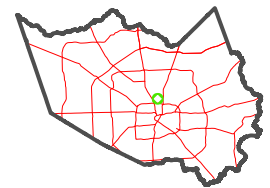
0 45 90 180 Feet

PUBLICATION DATE: 12/30/2023

Geospatial or map data maintained by the Harris Central Appraisal District is for informational purposes and may not have been prepared for or be suitable for legal, engineering, or surveying purposes. It does not represent an on-the-ground survey and only represents the approximate location of property boundaries.



MAP LOCATION

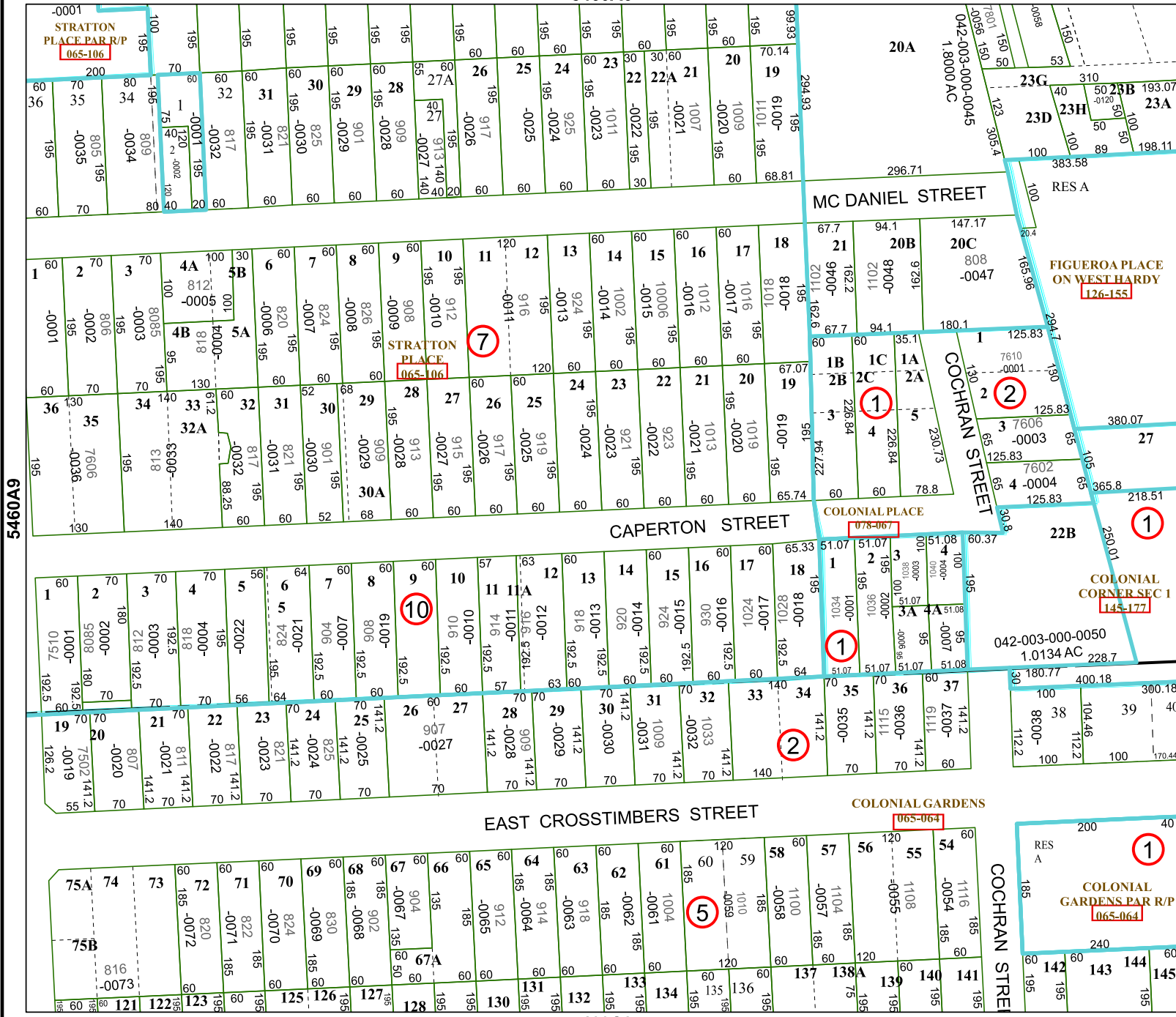


## FACET 5460A10

8	5	6	7	8
12	9	10	11	12
4	1	2	3	4

5460A6

5460C2



5460A9

5460A11

STRATTON PLACE PAR R/P  
065-106

FIGUEROA PLACE ON WEST HARDY  
126-155

STRATTON PLACE  
065-106

COLONIAL CORNER SEC 1  
145-177

COLONIAL GARDENS PAR R/P  
065-064

COLONIAL GARDENS  
065-064