

5461C7

# Harris Central Appraisal District

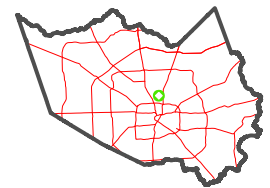


0 45 90 180 Feet

PUBLICATION DATE:  
2/4/2025

Geospatial or map data maintained by the Harris Central Appraisal District is for informational purposes and may **not** have been prepared for or be suitable for legal, engineering, or surveying purposes. It does **not** represent an on-the-ground survey and only represents the approximate location of property boundaries.

MAP LOCATION

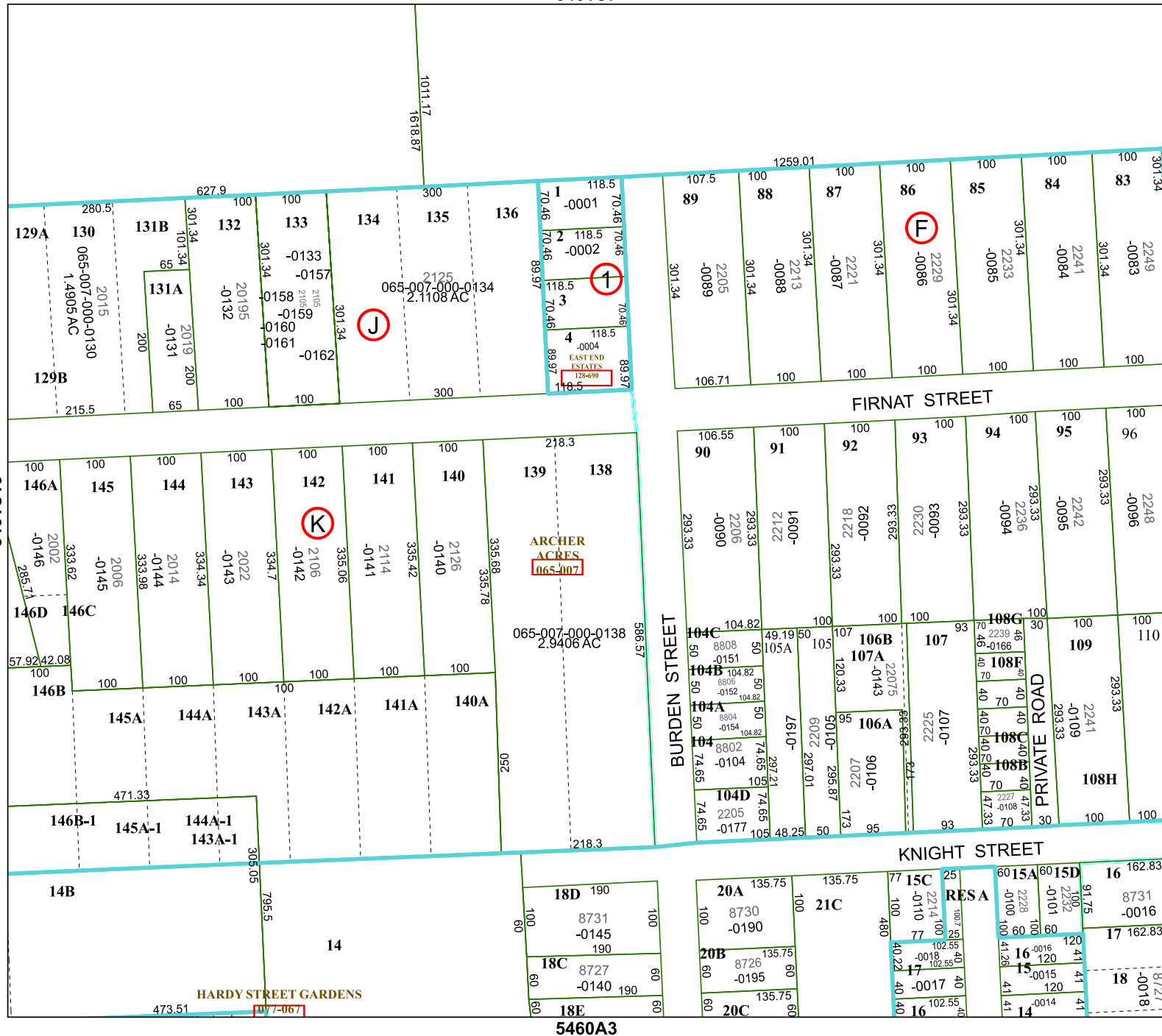


## FACET

5461C11

5	6	7	8	5
9	10	11	12	9
1	2	3	4	1

5461C10



5460A3