

# Harris Central Appraisal District

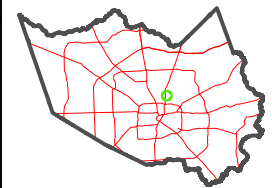


0 45 90 180 Feet

PUBLICATION DATE: 12/30/2023

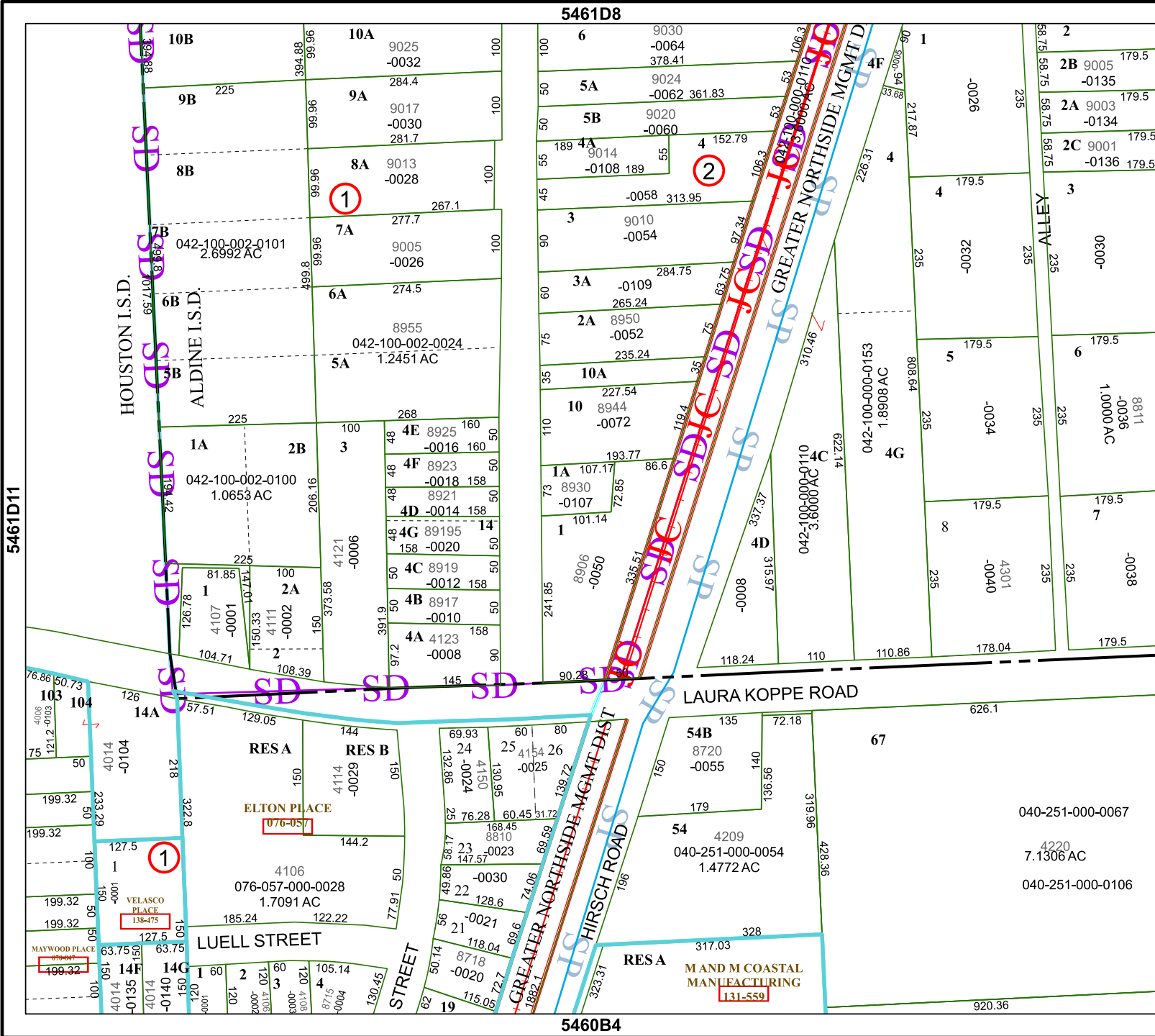
Geospatial or map data maintained by the Harris Central Appraisal District is for informational purposes and may not have been prepared for or be suitable for legal, engineering, or surveying purposes. It does not represent an on-the-ground survey and only represents the approximate location of property boundaries.

MAP LOCATION



## FACET 5461D12

6	7	8	5	6
10	11	12	9	10
2	3	4	1	2



5461D11

5461D8

5460B4

5561955

040-251-000-0067  
 4220  
 7.1306 AC  
 040-251-000-0106