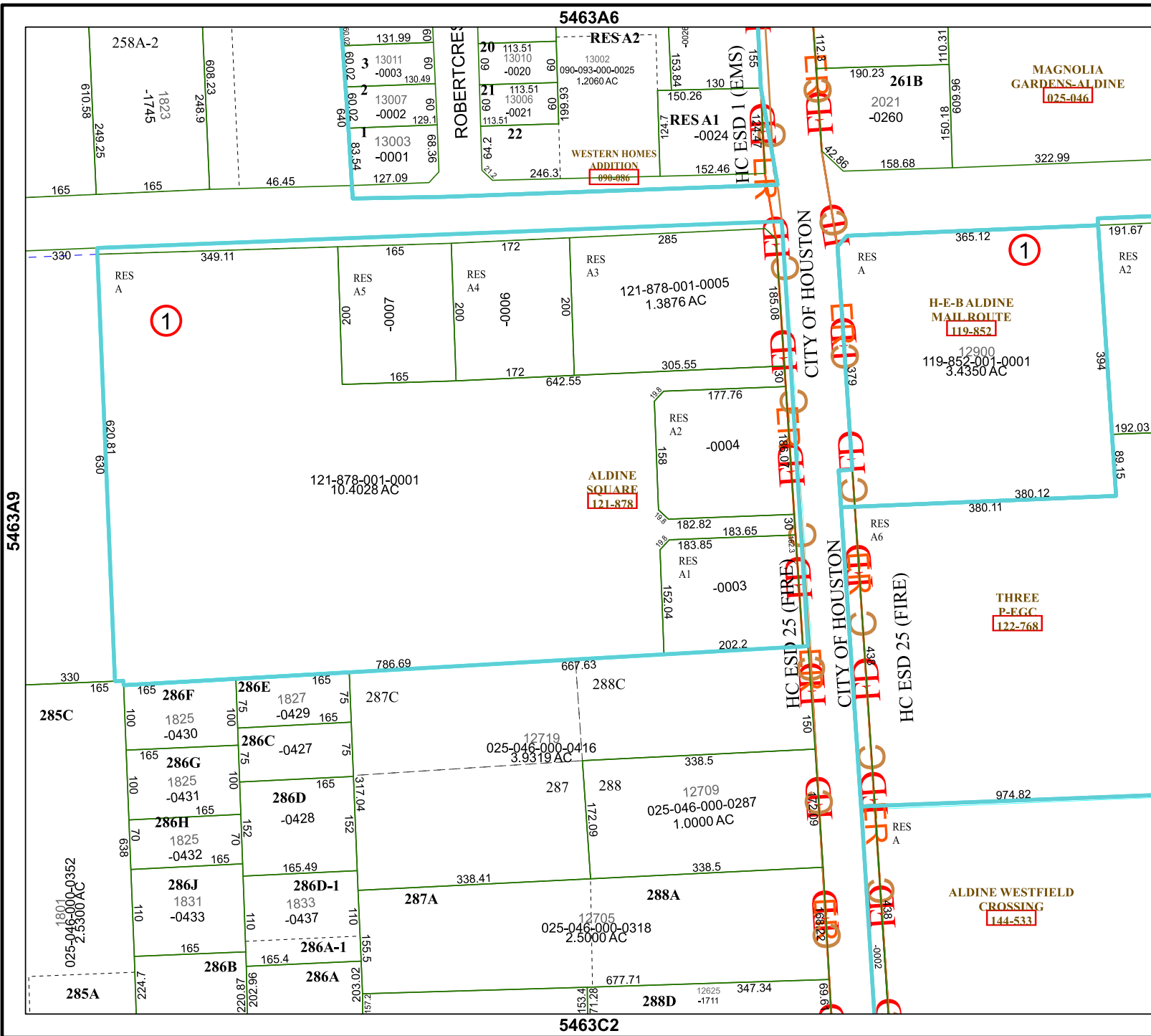


5463A6

5463C2



# Harris Central Appraisal District

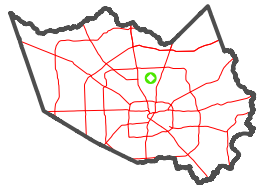


0 45 90 180 Feet

PUBLICATION DATE: 4/22/2024

Geospatial or map data maintained by the Harris Central Appraisal District is for informational purposes and may not have been prepared for or be suitable for legal, engineering, or surveying purposes. It does not represent an on-the-ground survey and only represents the approximate location of property boundaries.

MAP LOCATION



## FACET 5463A10

8	5	6	7	8
12	9	10	11	12
4	1	2	3	4

5463A9

5463A11