

Harris Central Appraisal District



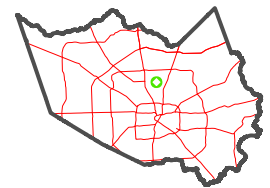
0 45 90 180 Feet

PUBLICATION DATE:
4/22/2024

Geospatial or map data maintained by the Harris Central Appraisal District is for informational purposes and may not have been prepared for or be suitable for legal, engineering, or surveying purposes. It does not represent an on-the-ground survey and only represents the approximate location of property boundaries.



MAP LOCATION

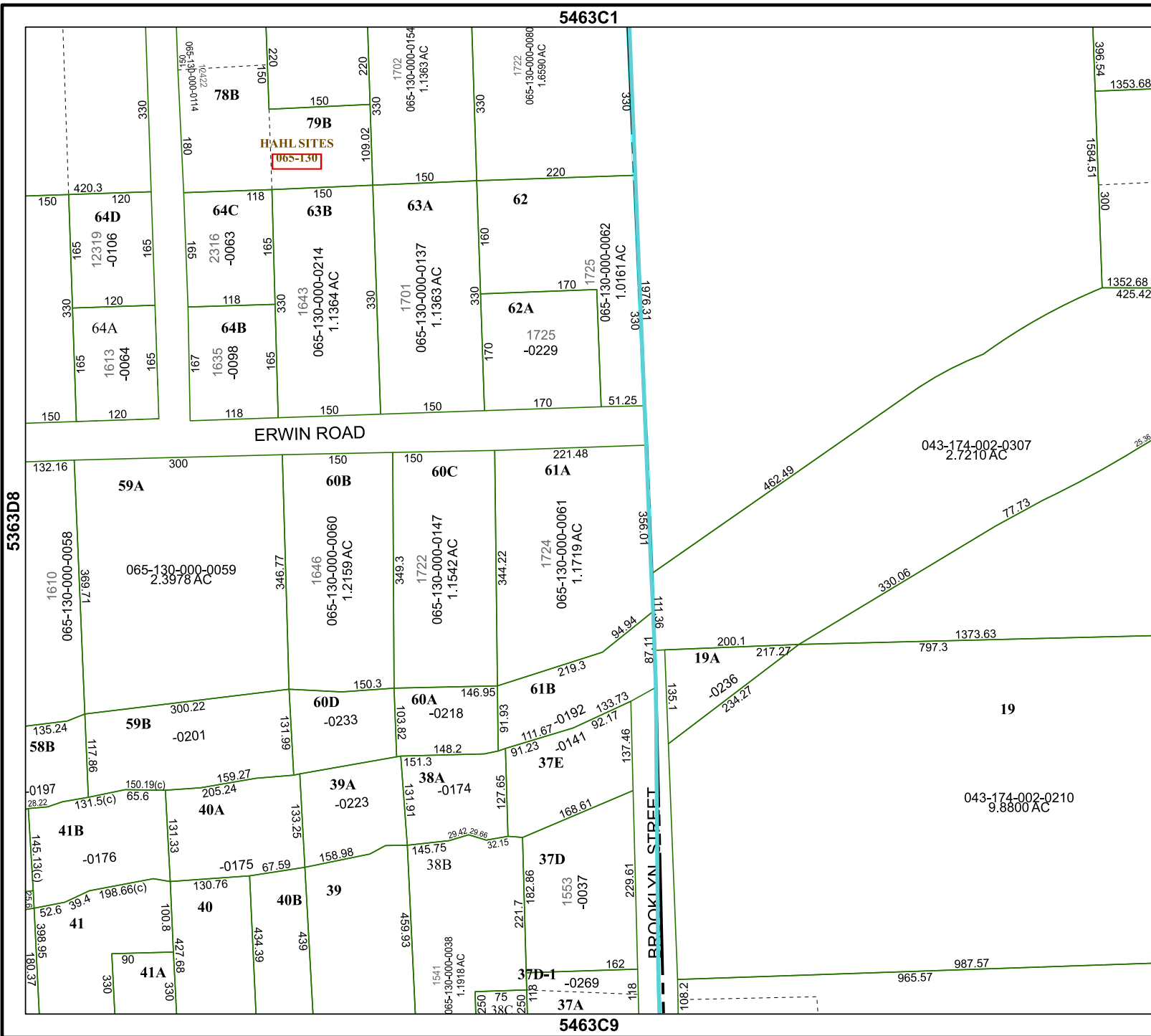


FACET 5463C5

3	4	1	2	3
7	8	5	6	7
11	12	9	10	11

5463C1

5463C9



5363D8

5463C6

ERWIN ROAD

BROOKLYN STREET

043-174-002-0307
2.7210 AC

043-174-002-0210
9.8800 AC

HAHL SITES
065-130