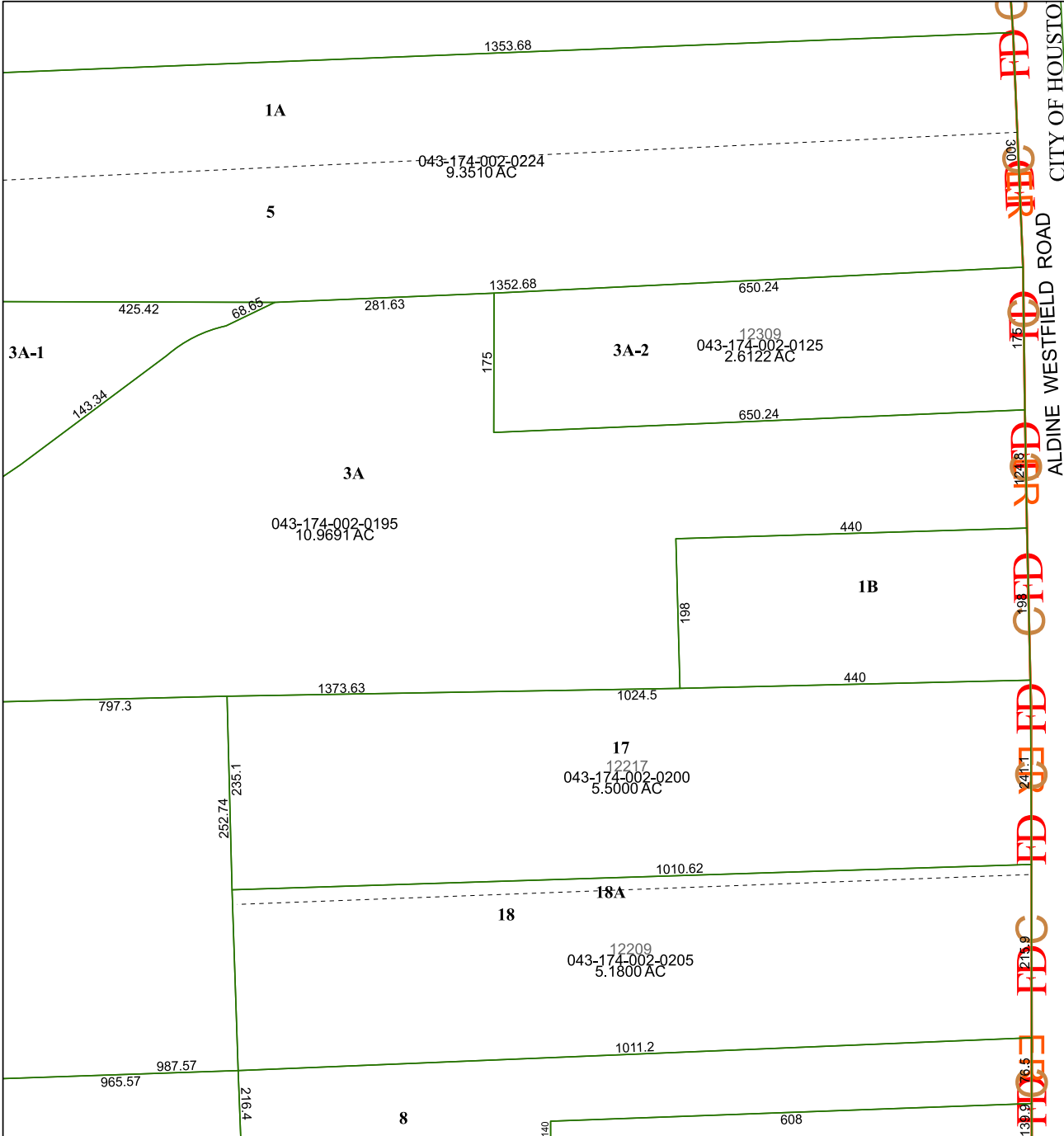


5463C2

5463C5



5463C10

CITY OF HOUSTON
 ALDINE WESTFIELD ROAD
 139.91
 76.65
 241.1
 191
 124.8
 175
 300

Harris Central Appraisal District



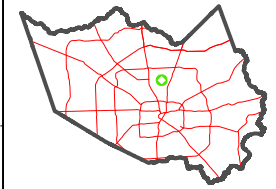
0 45 90 180 Feet

PUBLICATION DATE:
4/22/2024

Geospatial or map data maintained by the Harris Central Appraisal District is for informational purposes and may not have been prepared for or be suitable for legal, engineering, or surveying purposes. It does not represent an on-the-ground survey and only represents the approximate location of property boundaries.



MAP LOCATION



FACET 5463C6

4	1	2	3	4
8	5	6	7	8
12	9	10	11	12

5463C7