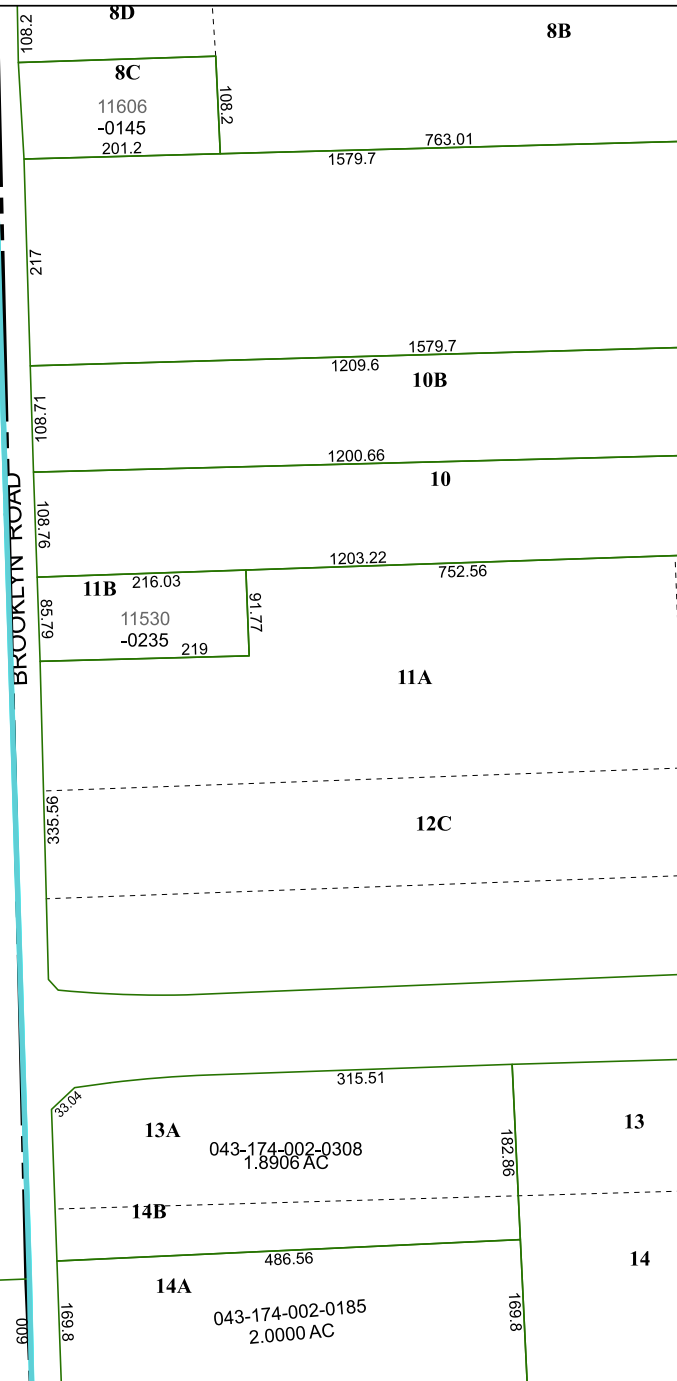
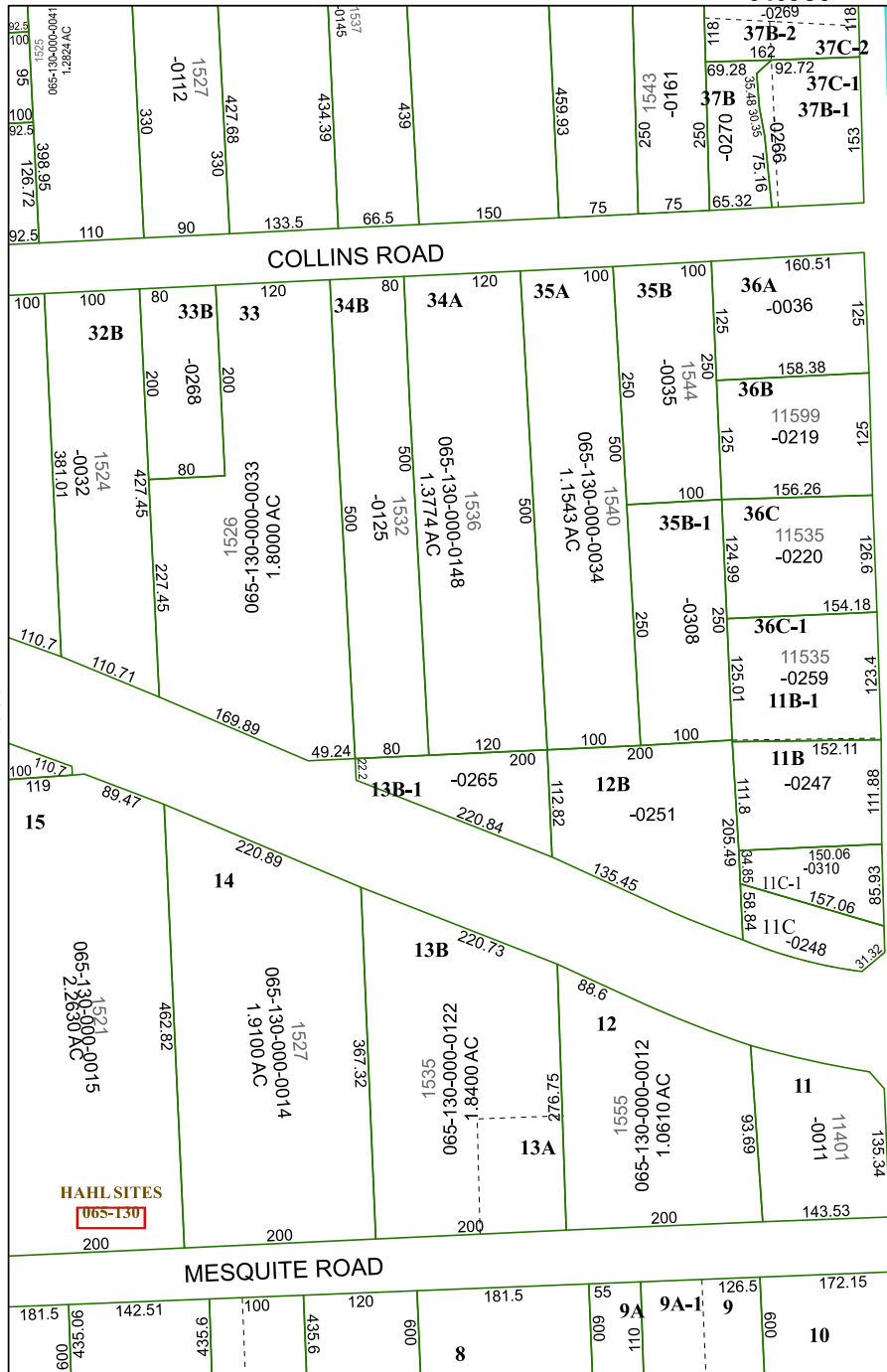


5463C5

5462A1



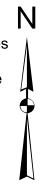
# Harris Central Appraisal District



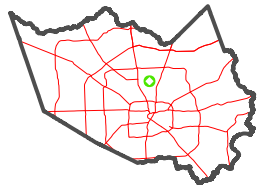
0 45 90 180 Feet

PUBLICATION DATE: 5/30/2024

Geospatial or map data maintained by the Harris Central Appraisal District is for informational purposes and may not have been prepared for or be suitable for legal, engineering, or surveying purposes. It does not represent an on-the-ground survey and only represents the approximate location of property boundaries.



MAP LOCATION



## FACET 5463C9

7	8	5	6	7
11	12	9	10	11
3	4	1	2	3

5363D12

5463C10

HAHL SITES  
065-130

13A  
043-174-002-0308  
1.8906 AC

14A  
043-174-002-0185  
2.0000 AC