

5464B4

# Harris Central Appraisal District



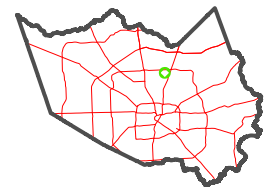
0 45 90 180 Feet

PUBLICATION DATE: 1/9/2023

Geospatial or map data maintained by the Harris Central Appraisal District is for informational purposes and may not have been prepared for or be suitable for legal, engineering, or surveying purposes. It does not represent an on-the-ground survey and only represents the approximate location of property boundaries.



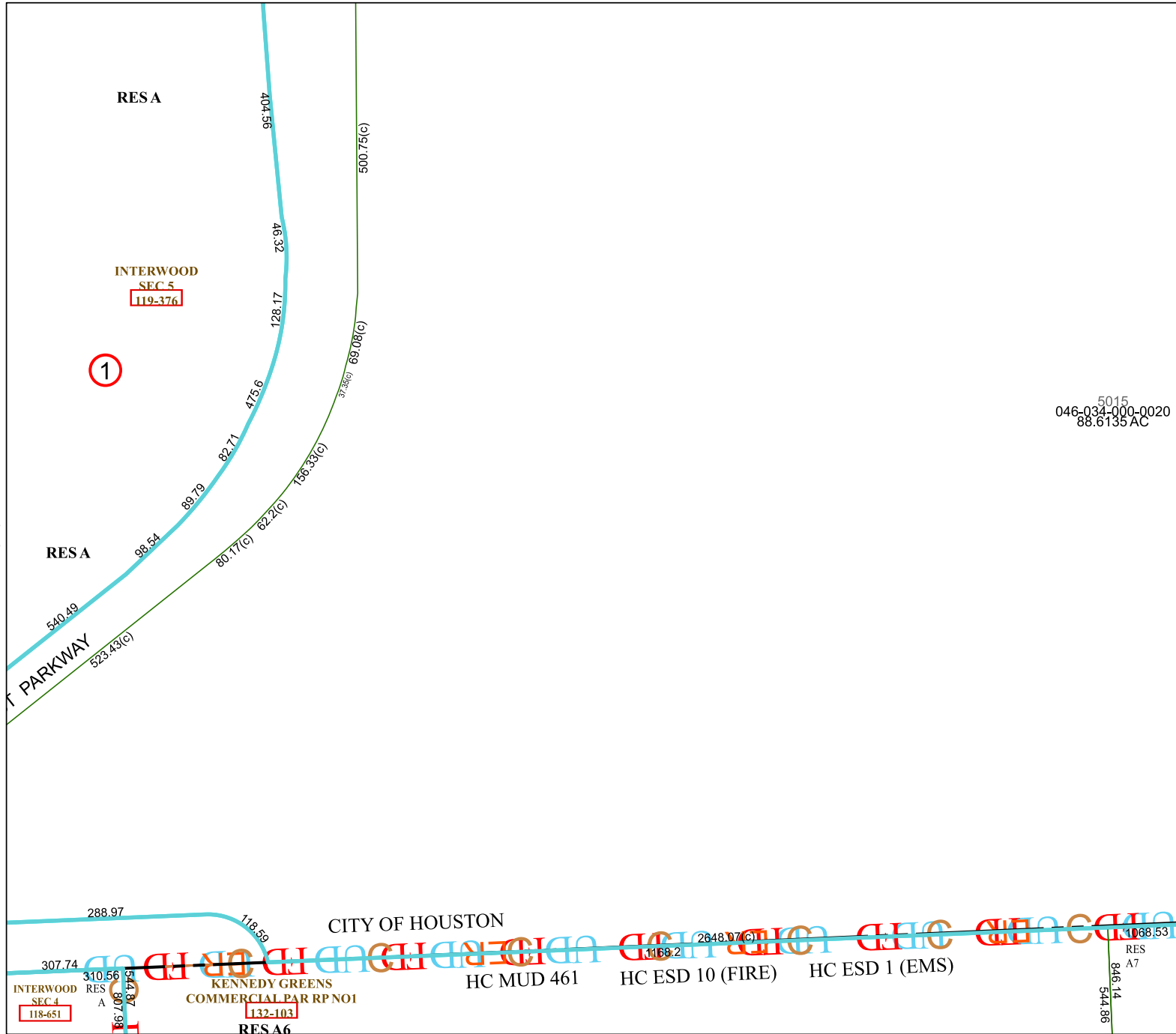
### MAP LOCATION



## FACET 5464B8

2	3	4	1	2
6	7	8	5	6
10	11	12	9	10

5464B7



5015  
046-034-000-0020  
88.6135 AC

5564A5

5464B12