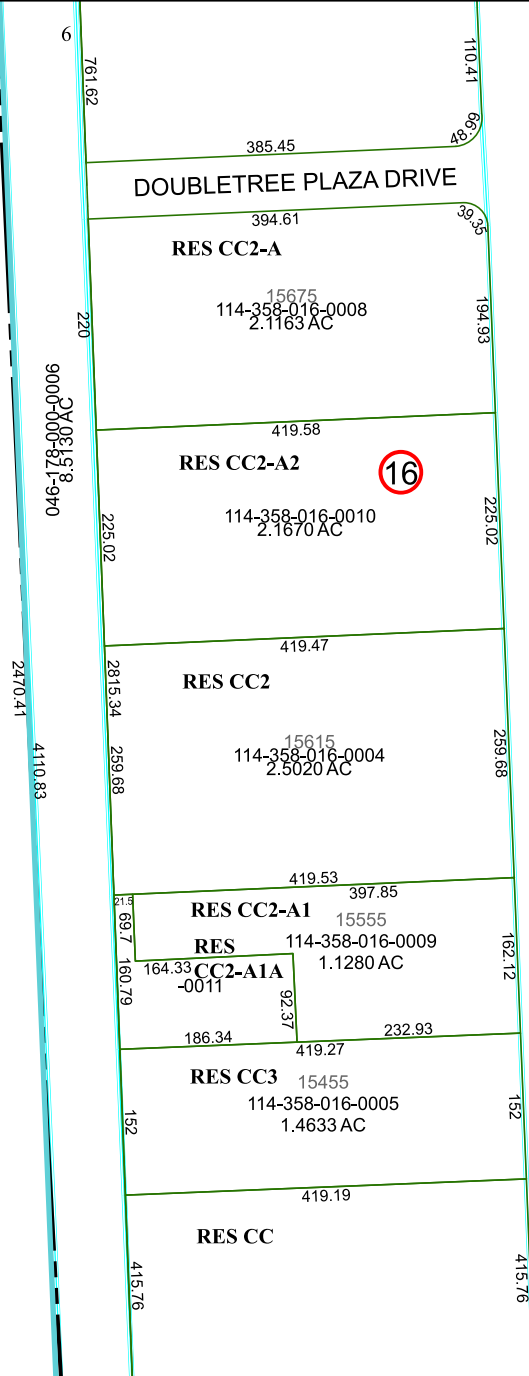


5465B10

5465D1

139-112-002-0001
69.9861 AC

PRESIDENTS
PARK A/R/P
139-112



5465D6

Harris Central Appraisal District



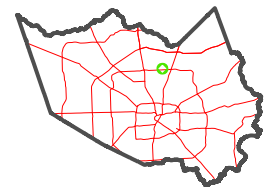
0 45 90 180 Feet

PUBLICATION DATE:
5/22/2023

Geospatial or map data maintained by the Harris Central Appraisal District is for informational purposes and may **not** have been prepared for or be suitable for legal, engineering, or surveying purposes. It does **not** represent an on-the-ground survey and only represents the approximate location of property boundaries.



MAP LOCATION



FACET 5465D2

12	9	10	11	12
4	1	2	3	4
8	5	6	7	8