

5465B11

RES AA

RES GG

114-358-015-0002  
8.0000 AC

114-358-015-0016  
2.8000 AC

15

114-358-015-0001  
16.1324 AC

14

RES Z

114-358-014-0001  
7.0821 AC

# Harris Central Appraisal District



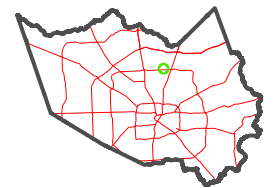
0 45 90 180 Feet

PUBLICATION DATE:  
6/5/2023

Geospatial or map data maintained by the Harris Central Appraisal District is for informational purposes and may not have been prepared for or be suitable for legal, engineering, or surveying purposes. It does not represent an on-the-ground survey and only represents the approximate location of property boundaries.



MAP LOCATION



## FACET

### 5465D3

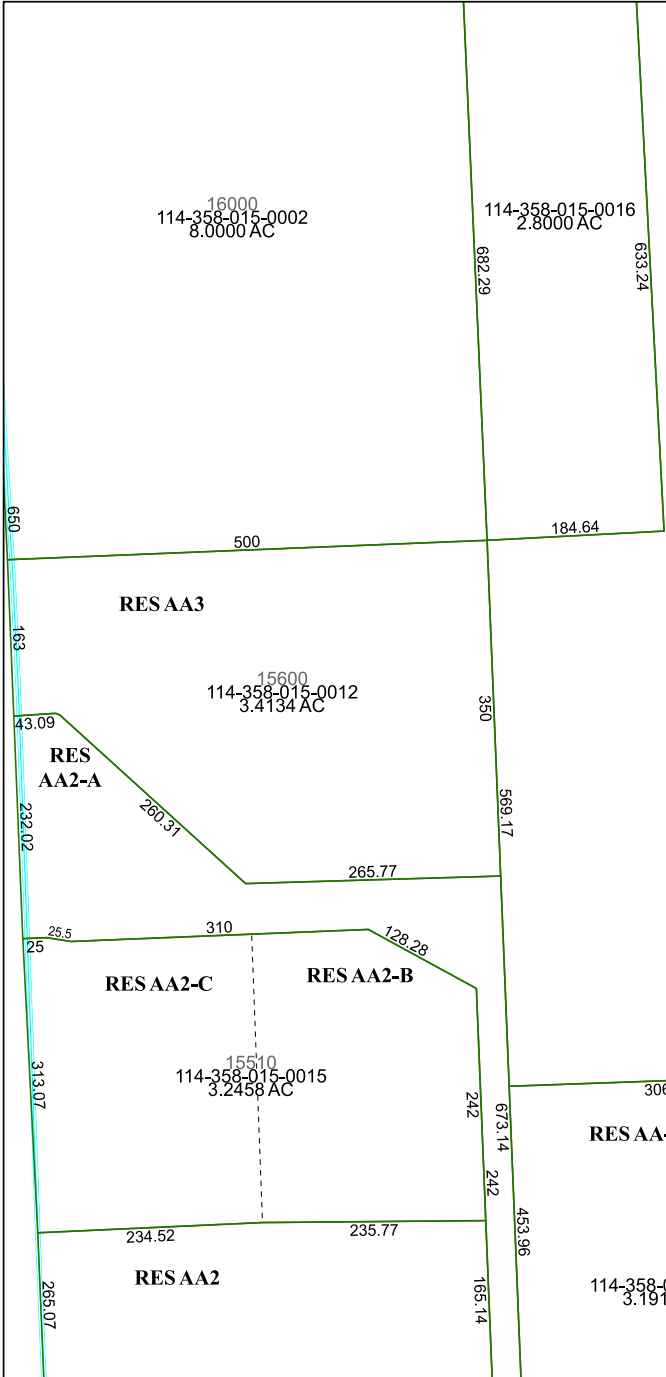
9	10	11	12	9
1	2	3	4	1
5	6	7	8	5

5465D7

INTERNATIONAL PLAZA

5465D2

5465D4



650  
163  
232.02  
25  
313.07  
285.07

RES AA3

114-358-015-0012  
3.4134 AC

RES AA2-A

RES AA2-C

RES AA2-B

114-358-015-0015  
3.2458 AC

RES AA2

RES AA-6

RES AA-5

RES Z2

114-358-015-0019  
3.1912 AC

114-358-015-0018  
4.1034 AC

212.02  
429

316.12  
324.9

390.96

58.616

106.96

39.28

134.43

196.64

184.63

615.29

270.38

467.01

420.92

39.27

105.01

289.89

106.96

39.27

105.01

289.89

106.96

39.27

105.01

289.89

682.29

633.24

184.64

500

350

569.17

265.77

310

128.28

242

673.14

242

453.96

165.14

234.52

235.77

454.03

306

306

394

533

316.12

324.9

316.12

324.9

316.12

324.9

316.12

324.9

316.12

324.9

316.12

324.9

316.12

324.9

316.12

324.9

316.12

324.9

316.12

324.9

316.12

324.9

316.12

324.9

316.12

324.9

316.12

324.9

316.12

324.9

316.12

324.9

316.12

324.9

316.12

324.9

316.12

324.9

316.12

324.9

316.12

324.9

316.12

324.9

316.12

324.9

316.12

324.9

316.12

324.9

316.12

324.9

316.12

324.9

316.12

324.9

316.12

324.9

316.12

324.9

316.12

324.9

316.12

324.9

316.12

324.9

316.12

324.9

316.12

324.9

316.12

324.9

316.12

324.9

316.12

324.9

316.12

324.9

316.12

324.9

316.12

324.9

316.12

324.9

316.12

324.9

316.12

324.9

316.12

324.9

316.12

324.9

316.12

324.9

316.12

324.9

316.12

324.9

316.12

324.9

316.12

324.9

316.12

324.9

316.12

324.9

316.12

324.9

316.12

324.9

316.12

324.9

316.12

324.9

316.12

324.9

316.12

324.9

316.12

324.9