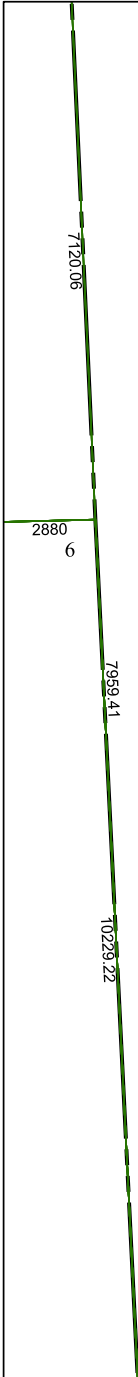


5467D11

5466B2



5466B7

# Harris Central Appraisal District



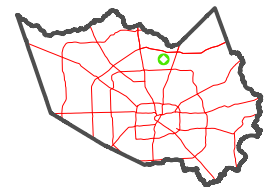
0 45 90 180 Feet

PUBLICATION DATE:  
1/9/2023

Geospatial or map data maintained by the Harris Central Appraisal District is for informational purposes and may **not** have been prepared for or be suitable for legal, engineering, or surveying purposes. It does **not** represent an on-the-ground survey and only represents the approximate location of property boundaries.



## MAP LOCATION



# FACET

## 5466B3

9	10	11	12	9
1	2	3	4	1
5	6	7	8	5

5466B4