

5469C11

Harris Central Appraisal District



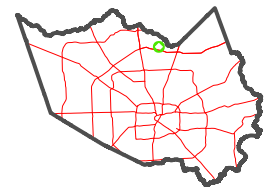
0 45 90 180 Feet

PUBLICATION DATE:
1/9/2023

Geospatial or map data maintained by the Harris Central Appraisal District is for informational purposes and may not have been prepared for or be suitable for legal, engineering, or surveying purposes. It does not represent an on-the-ground survey and only represents the approximate location of property boundaries.



MAP LOCATION



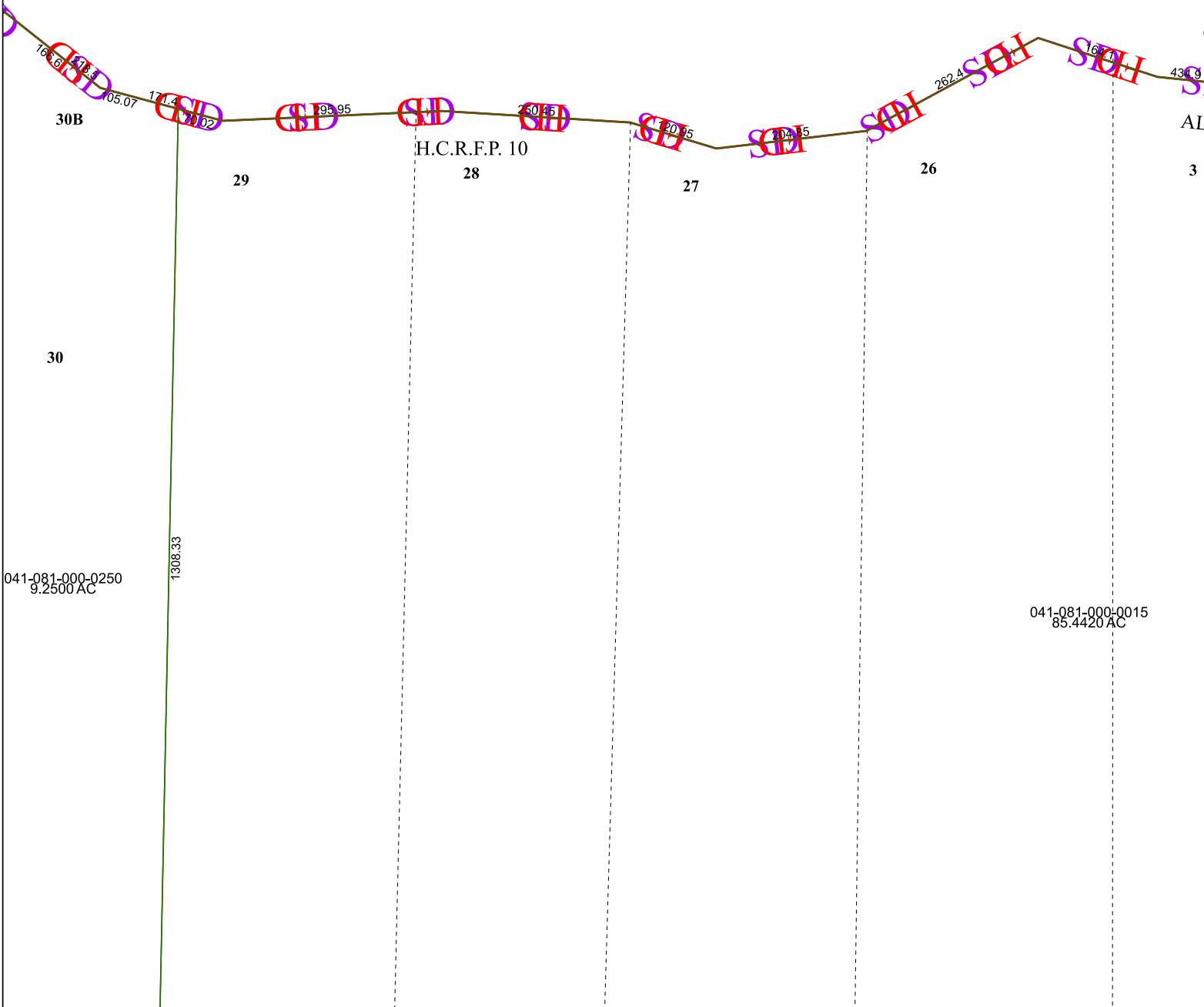
FACET 5468A3

9	10	11	12	9
1	2	3	4	1
5	6	7	8	5

5468A7

5468A2

5468A4



30B

29

28

27

26

3

H.C.R.F.P. 10

041-081-000-0250
9.2500 AC

041-081-000-0015
85.4420 AC

1308.33

30

166.61
171.5

105.07
171.4
20.02

295.95

260.45

120.95

204.35

262.4

167.1

434.9