

Harris Central Appraisal District

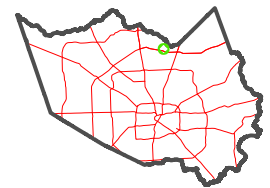


0 45 90 180 Feet

PUBLICATION DATE:
1/9/2023

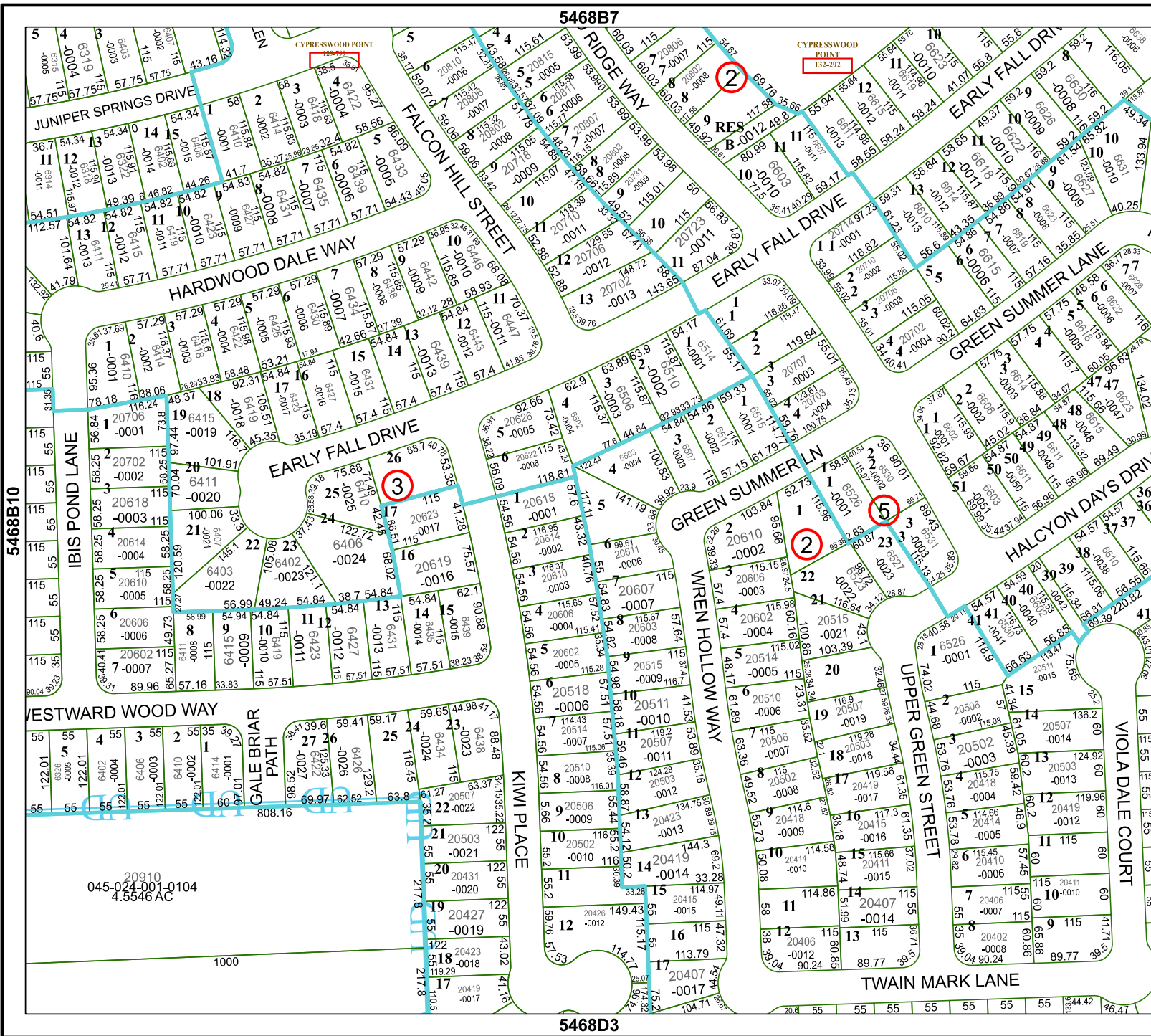
Geospatial or map data maintained by the Harris Central Appraisal District is for informational purposes and may not be suitable for legal, engineering, or surveying purposes. It does not represent an on-the-ground survey and only represents the approximate location of property boundaries.

MAP LOCATION



FACET 5468B11

5	6	7	8	5
9	10	11	12	9
1	2	3	4	1



5468B10

5468B7

5468D3

5468B12

20910
045-024-001-0104
4.5546 AC

1000