

5468B8

5468D4

# Harris Central Appraisal District

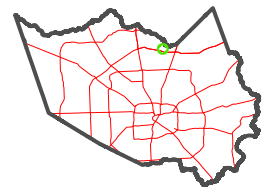


0 45 90 180 Feet

PUBLICATION DATE: 1/9/2023

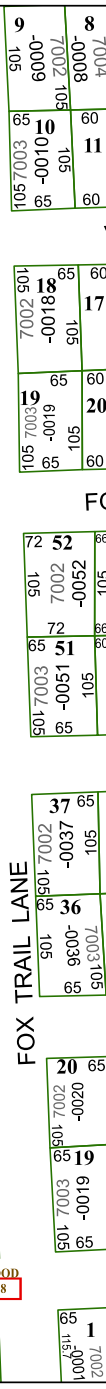
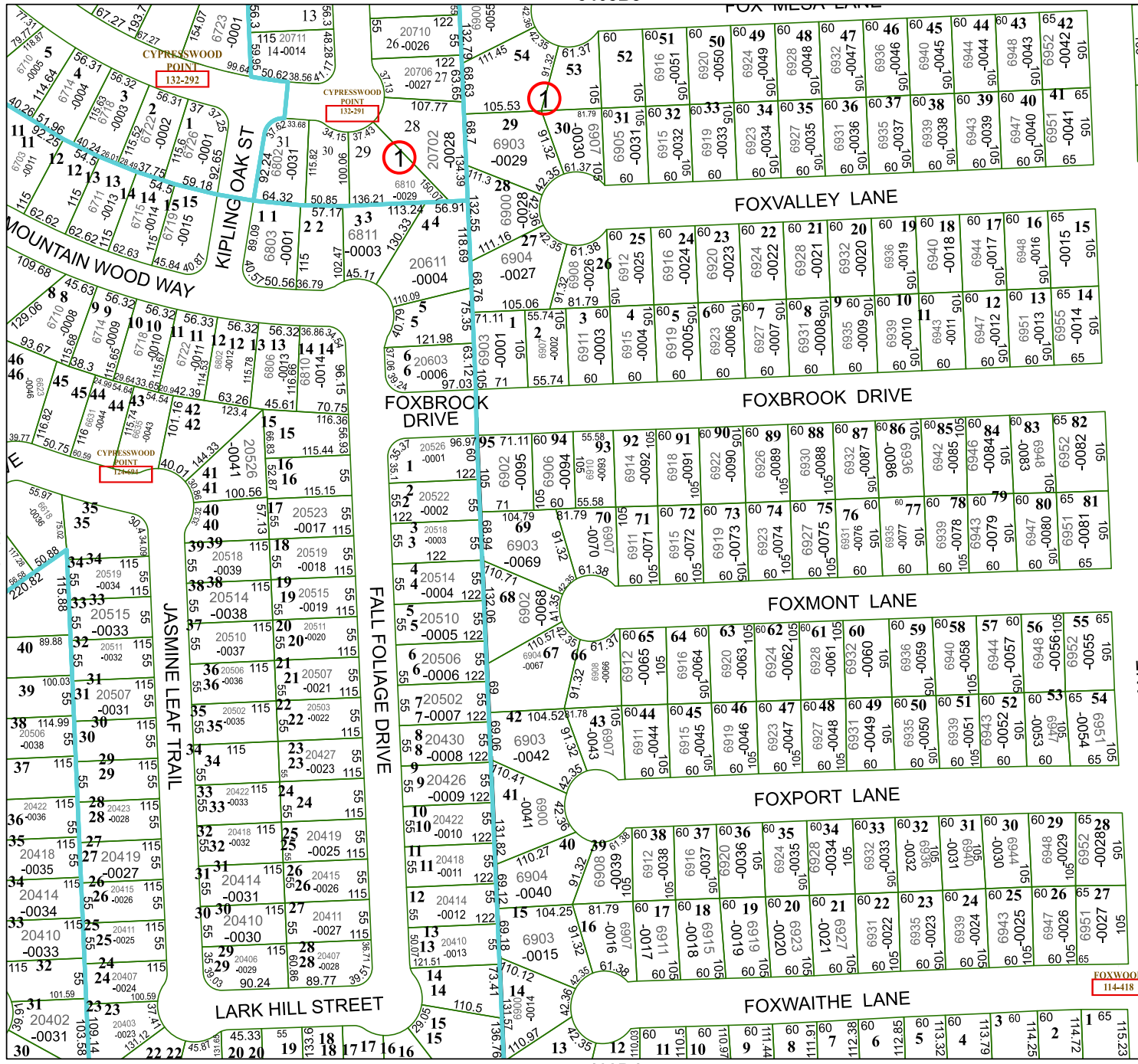
Geospatial or map data maintained by the Harris Central Appraisal District is for informational purposes and may not have been prepared for or be suitable for legal, engineering, or surveying purposes. It does not represent an on-the-ground survey and only represents the approximate location of property boundaries.

### MAP LOCATION



# FACET 5468B12

6	7	8	5	6
10	11	12	9	10
2	3	4	1	2



5468B11

5568A9



FOXWOOD 114-418