

5468A12

5301
50.9822 AC

43

Harris Central Appraisal District



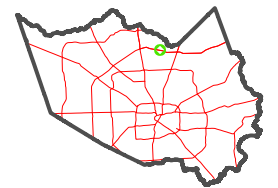
0 45 90 180 Feet

PUBLICATION DATE:
4/22/2024

Geospatial or map data maintained by the Harris Central Appraisal District is for informational purposes and may not have been prepared for or be suitable for legal, engineering, or surveying purposes. It does not represent an on-the-ground survey and only represents the approximate location of property boundaries.



MAP LOCATION



FACET 5468C4

10	11	12	9	10
2	3	4	1	2
6	7	8	5	6

5468C3

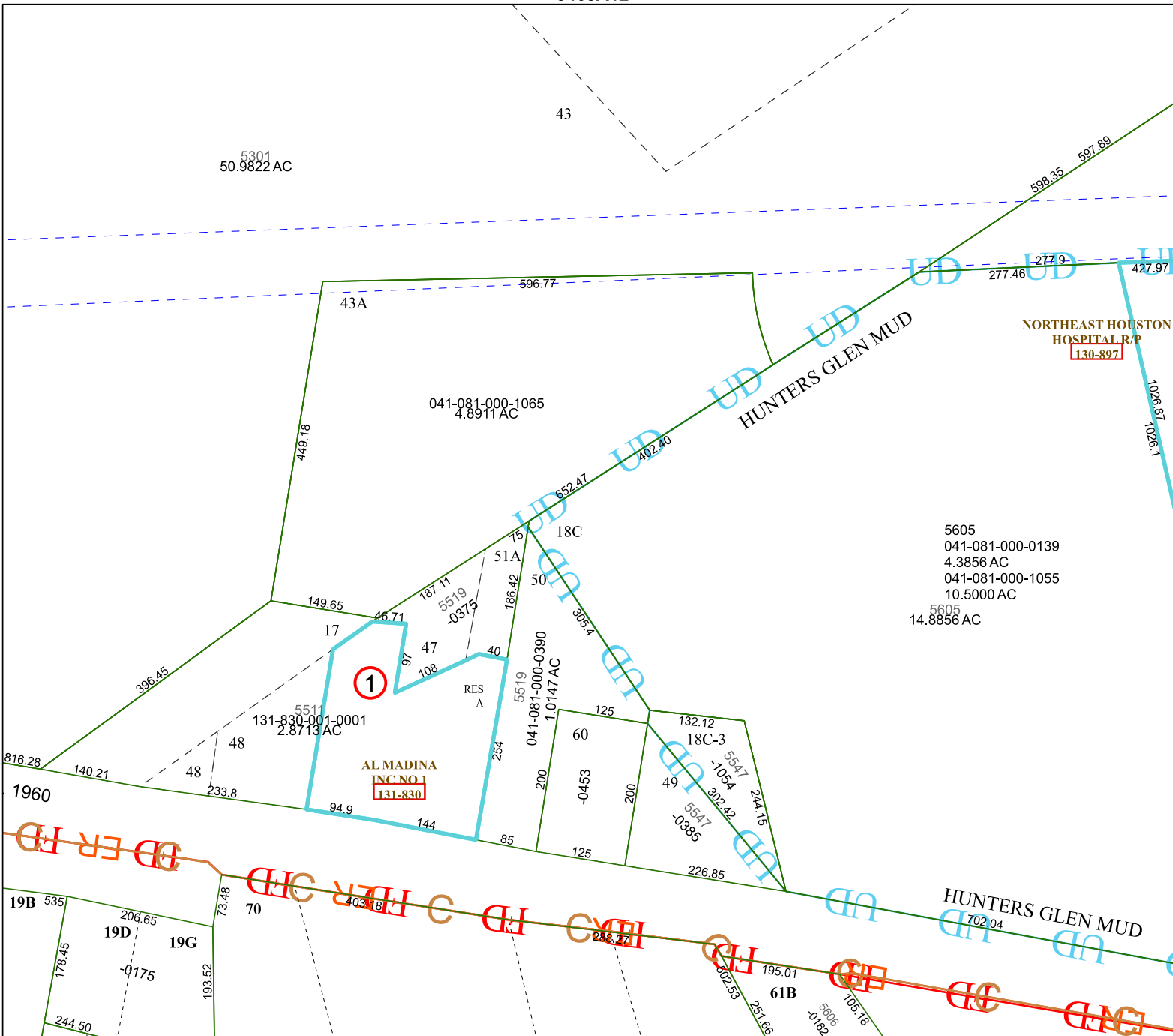
5468D1

NORTHEAST HOUSTON
HOSPITAL R/P
130-897

5605
041-081-000-0139
4.3856 AC
041-081-000-1055
10.5000 AC
5605
14.8856 AC

1

AL MADINA
INC NO
131-830



5468C8