

# Harris Central Appraisal District



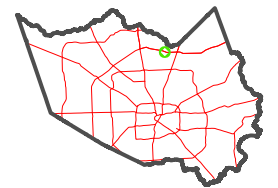
0 45 90 180 Feet

PUBLICATION DATE:  
12/30/2023

Geospatial or map data maintained by the Harris Central Appraisal District is for informational purposes and may not have been prepared for or be suitable for legal, engineering, or surveying purposes. It does not represent an on-the-ground survey and only represents the approximate location of property boundaries.

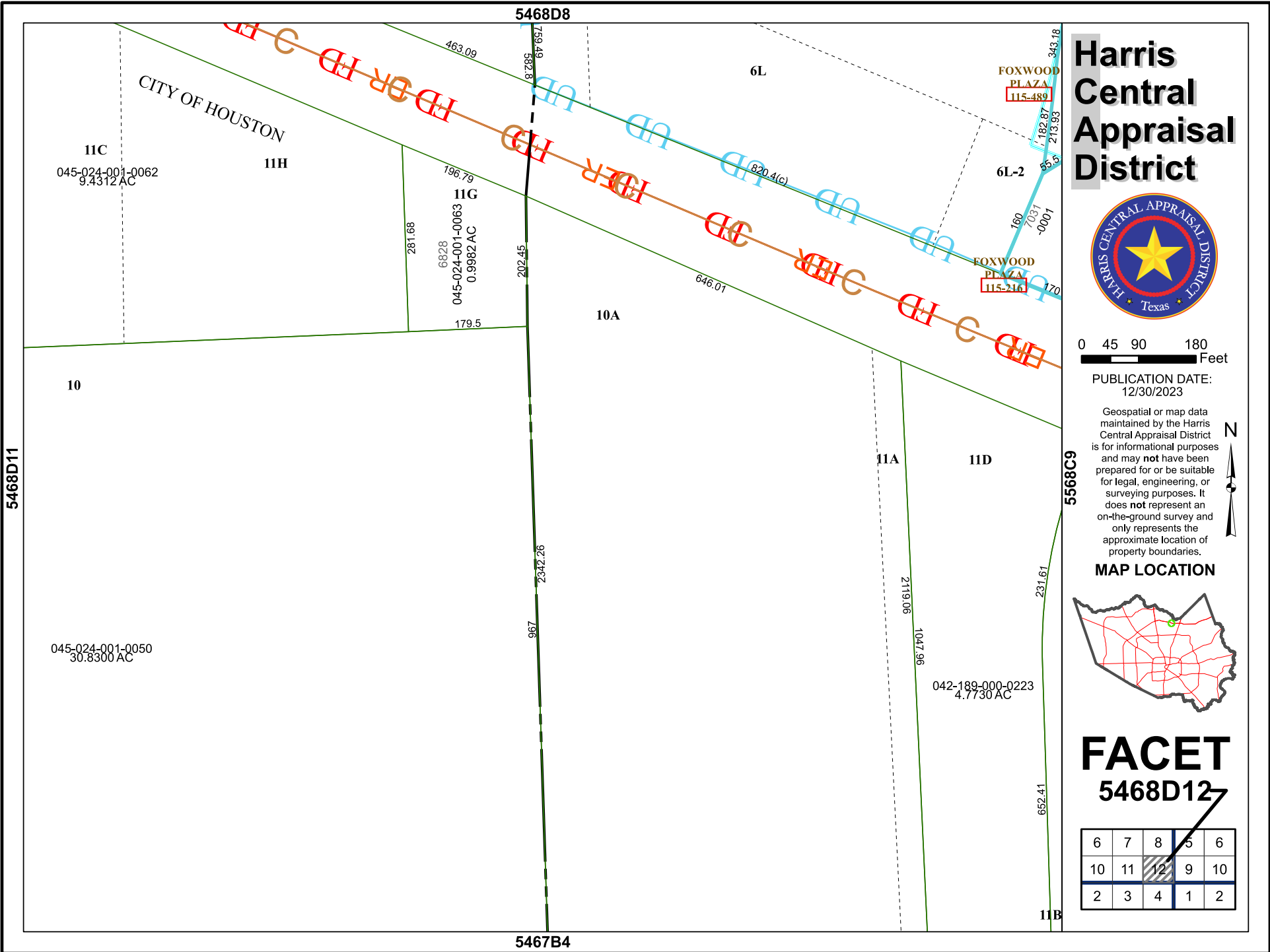


### MAP LOCATION



## FACET 5468D12

6	7	8	5	6
10	11	12	9	10
2	3	4	1	2



5468D8

5467B4

5468D11

5568C9

11B

CITY OF HOUSTON

11C

045-024-001-0062  
9.4312 AC

11H

11G

045-024-001-0063  
0.9982 AC

10A

11A

11D

6L

6L-2

FOXWOOD  
PLAZA  
115-216

FOXWOOD  
PLAZA  
115-489

045-024-001-0050  
30.8300 AC

042-189-000-0223  
4.7730 AC

967

2342.26

202.45

281.68

6828

196.79

463.09

759.49

582.3

646.01

820.4(C)

2119.06

1047.96

231.61

652.41

160

7037.1

170

213.93

343.18

55.5

182.87

55.5

182.87

213.93

343.18

55.5

182.87

213.93

343.18

55.5

182.87

213.93

343.18

55.5

182.87

213.93

343.18

55.5

182.87

213.93

343.18

55.5

182.87

213.93

343.18

55.5

182.87

213.93

343.18

55.5

182.87

213.93

343.18

55.5

182.87

213.93

343.18

55.5

182.87

213.93

343.18

55.5

182.87

213.93

343.18

55.5

182.87

213.93

343.18

55.5

182.87

213.93

343.18

55.5

182.87

213.93

343.18

55.5

182.87

213.93

343.18

55.5

182.87

213.93

343.18

55.5

182.87

213.93

343.18

55.5

182.87

213.93

343.18

55.5

182.87

213.93

343.18

55.5

182.87

213.93

343.18

55.5

182.87

213.93

343.18

55.5

182.87

213.93

343.18

55.5

182.87

213.93

343.18

55.5

182.87

213.93

343.18

55.5

182.87

213.93

343.18

55.5

182.87

213.93

343.18

55.5

182.87

213.93

343.18

55.5

182.87

213.93

343.18

55.5

182.87

213.93

343.18

55.5

182.87

213.93

343.18

55.5

182.87

213.93

343.18

55.5

182.87

213.93

343.18

55.5

182.87

213.93

343.18

55.5

182.87

213.93

343.18

55.5

182.87

213.93

343.18

55.5

182.87

213.93

343.18

55.5

182.87

213.93

343.18

55.5

182.87

213.93

343.18

55.5

182.87

213.93

343.18

55.5

182.87

213.93

343.18

55.5

182.87

213.93

343.18

55.5

182.87

213.93

343.18

55.5

182.87

213.93

343.18

55.5

182.87

213.93

343.18

55.5

182.87

213.93

343.18

55.5

182.87

213.93

343.18

55.5

182.87

213.93

343.18

55.5

182.87

213.93

343.18

55.5

182.87

213.93

343.18

55.5

182.87

213.93

343.18

55.5

182.87

213.93

343.18

55.5

182.87

213.93

343.18

55.5

182.87

213.93

343.18

55.5

182.87

213.93

343.18

55.5

182.87

</