

Harris Central Appraisal District

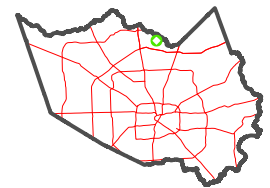


0 45 90 180 Feet

PUBLICATION DATE: 1/9/2023

Geospatial or map data maintained by the Harris Central Appraisal District is for informational purposes and may not be suitable for legal, engineering, or surveying purposes. It does not represent an on-the-ground survey and only represents the approximate location of property boundaries.

MAP LOCATION



FACET 5469A1

11	12	9	10	11
3	4	1	2	3
7	8	5	6	7

5470C9

MACON
ESTATES
126-296

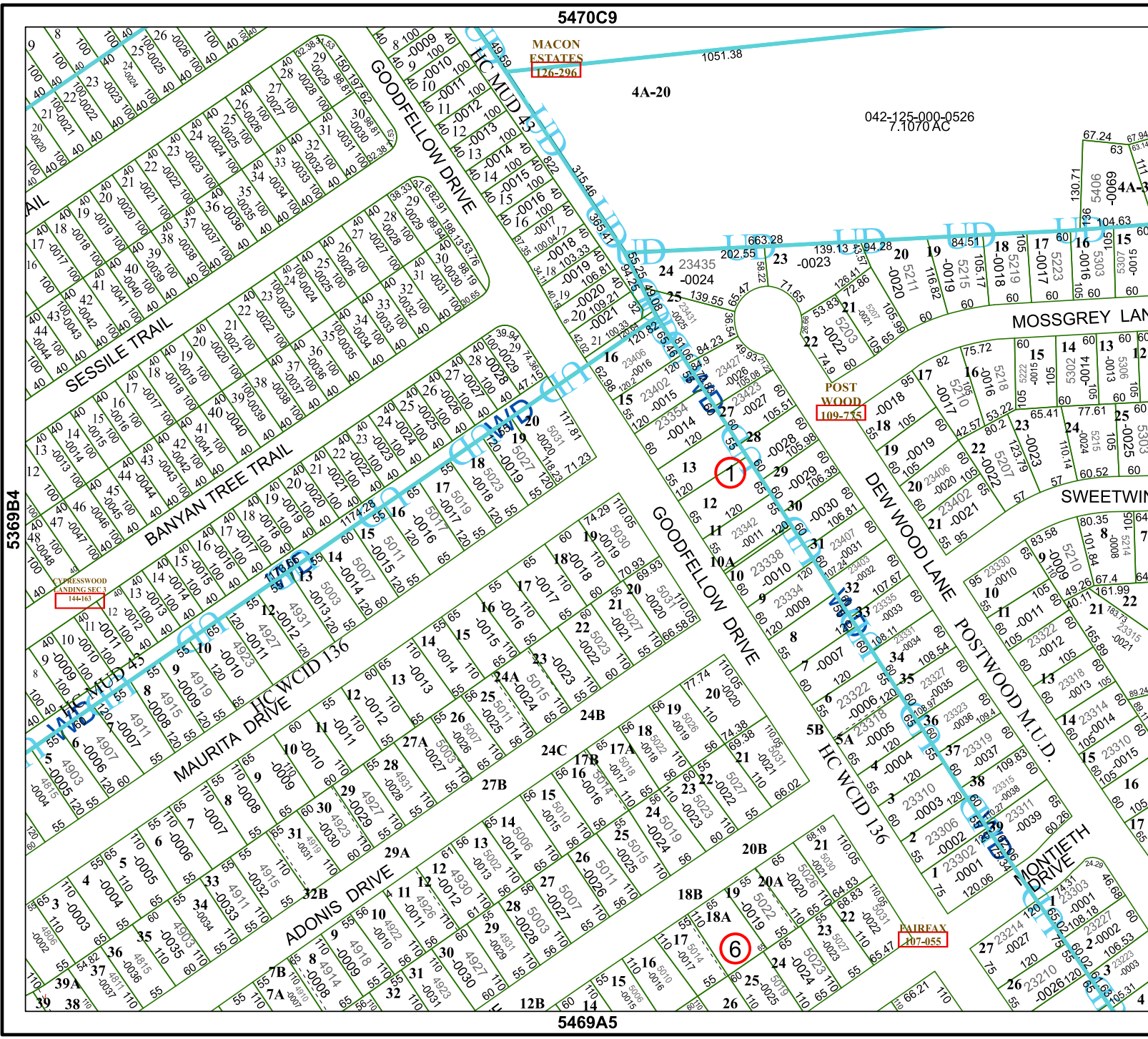
4A-20

042-125-000-0526
7.1070 AC

5469A5

POST
WOOD
109-743

FAIRWAY
107-055



5369B4

5469A2

