

5470D10

19B-3
042-145-000-0705
2.0000 AC

19B-1

042-145-000-0670
1.0000 AC

290.4

4C-9

4C-5

042-145-000-0667

042-145-000-0671

4C-4

7024
8.1488 AC

4C-3

4C-2

4C-10

4C-1

4C

4C-14

RES
A
**SPURLING
ESTATES**
145-584

1

7010
145-584-001-0001
3.6080 AC

4C-11

4

042-145-000-0672
2.8998 AC

7115
042-145-000-0030
5.0356 AC

8D-1

5469B6

Harris Central Appraisal District



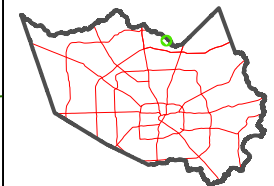
0 45 90 180 Feet

PUBLICATION DATE:
12/30/2023

Geospatial or map data maintained by the Harris Central Appraisal District is for informational purposes and may not have been prepared for or be suitable for legal, engineering, or surveying purposes. It does not represent an on-the-ground survey and only represents the approximate location of property boundaries.



MAP LOCATION



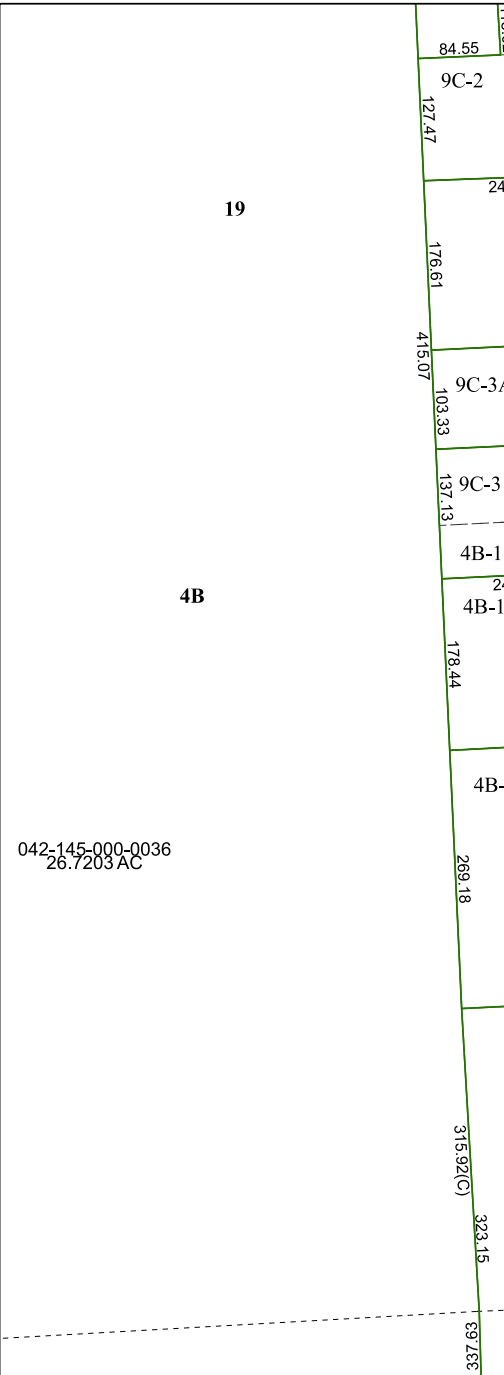
FACET

5469B2

12	9	10	11	12
4	1	2	3	4
8	5	6	7	8

5469B1

5469B3



19

4B

042-145-000-0036
26.7203 AC

