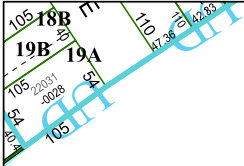


5469C7



2

041-081-000-0005
110.0000 AC

5469C10

5468A3

Harris Central Appraisal District



0 45 90 180
Feet

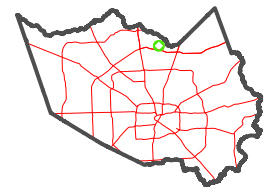
PUBLICATION DATE:
12/30/2023

Geospatial or map data maintained by the Harris Central Appraisal District is for informational purposes and may **not** have been prepared for or be suitable for legal, engineering, or surveying purposes. It does **not** represent an on-the-ground survey and only represents the approximate location of property boundaries.



5469C12

MAP LOCATION



FACET 5469C11

5	6	7	8	5
9	10	11	12	9
1	2	3	4	1