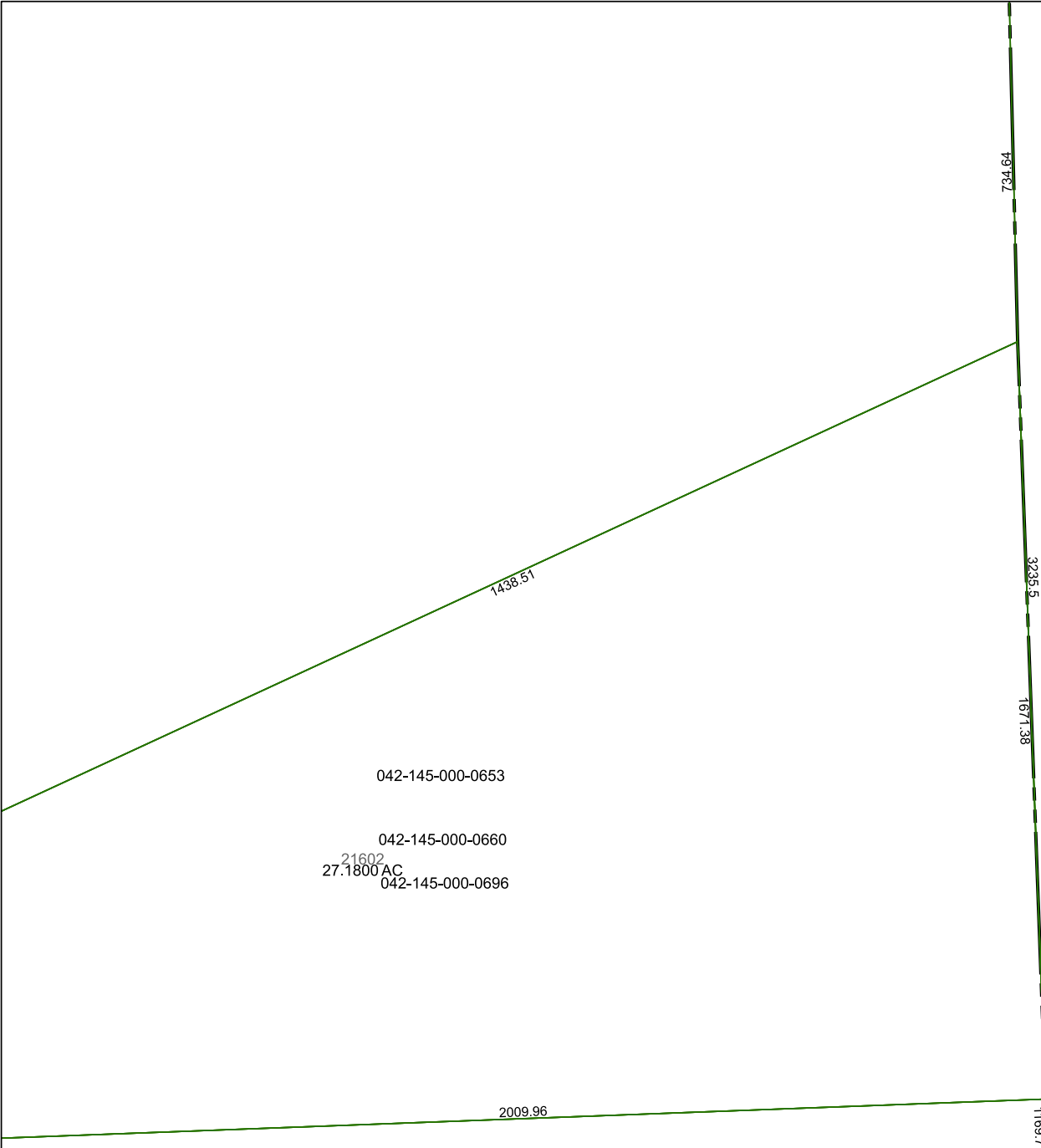


5469D3

5469D6



5469D11

# Harris Central Appraisal District



0 45 90 180  
 Feet

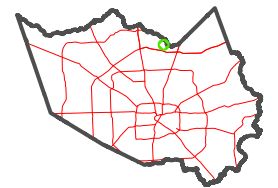
PUBLICATION DATE:  
 1/9/2023

Geospatial or map data maintained by the Harris Central Appraisal District is for informational purposes and may **not** have been prepared for or be suitable for legal, engineering, or surveying purposes. It does **not** represent an on-the-ground survey and only represents the approximate location of property boundaries.



5469D8

## MAP LOCATION



# FACET 5469D7

1	2	3	4	1
5	6	7	8	5
9	10	11	12	9