

5551A4

Harris Central Appraisal District



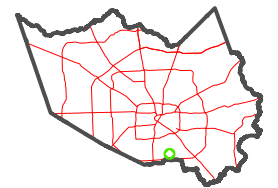
0 45 90 180 Feet

PUBLICATION DATE:
1/23/2024

Geospatial or map data maintained by the Harris Central Appraisal District is for informational purposes and may not have been prepared for or be suitable for legal, engineering, or surveying purposes. It does not represent an on-the-ground survey and only represents the approximate location of property boundaries.



MAP LOCATION

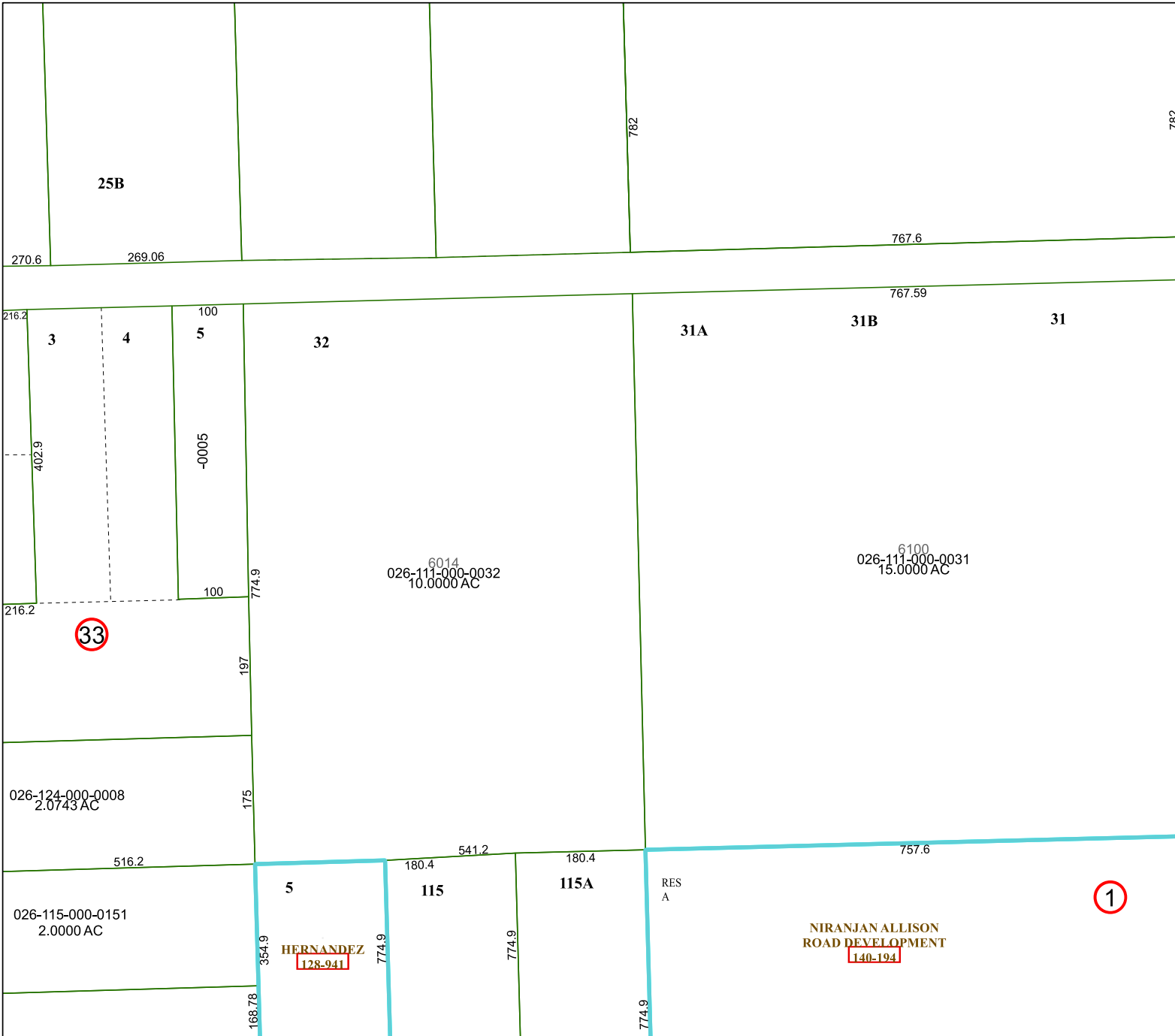


FACET 5551A8

2	3	4	1	2
6	7	8	5	6
10	11	12	9	10

5551A7

5551B5



5551A12