

# Harris Central Appraisal District

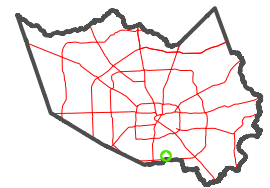


0 45 90 180 Feet

PUBLICATION DATE: 1/29/2024

Geospatial or map data maintained by the Harris Central Appraisal District is for informational purposes and may not have been prepared for or be suitable for legal, engineering, or surveying purposes. It does not represent an on-the-ground survey and only represents the approximate location of property boundaries.

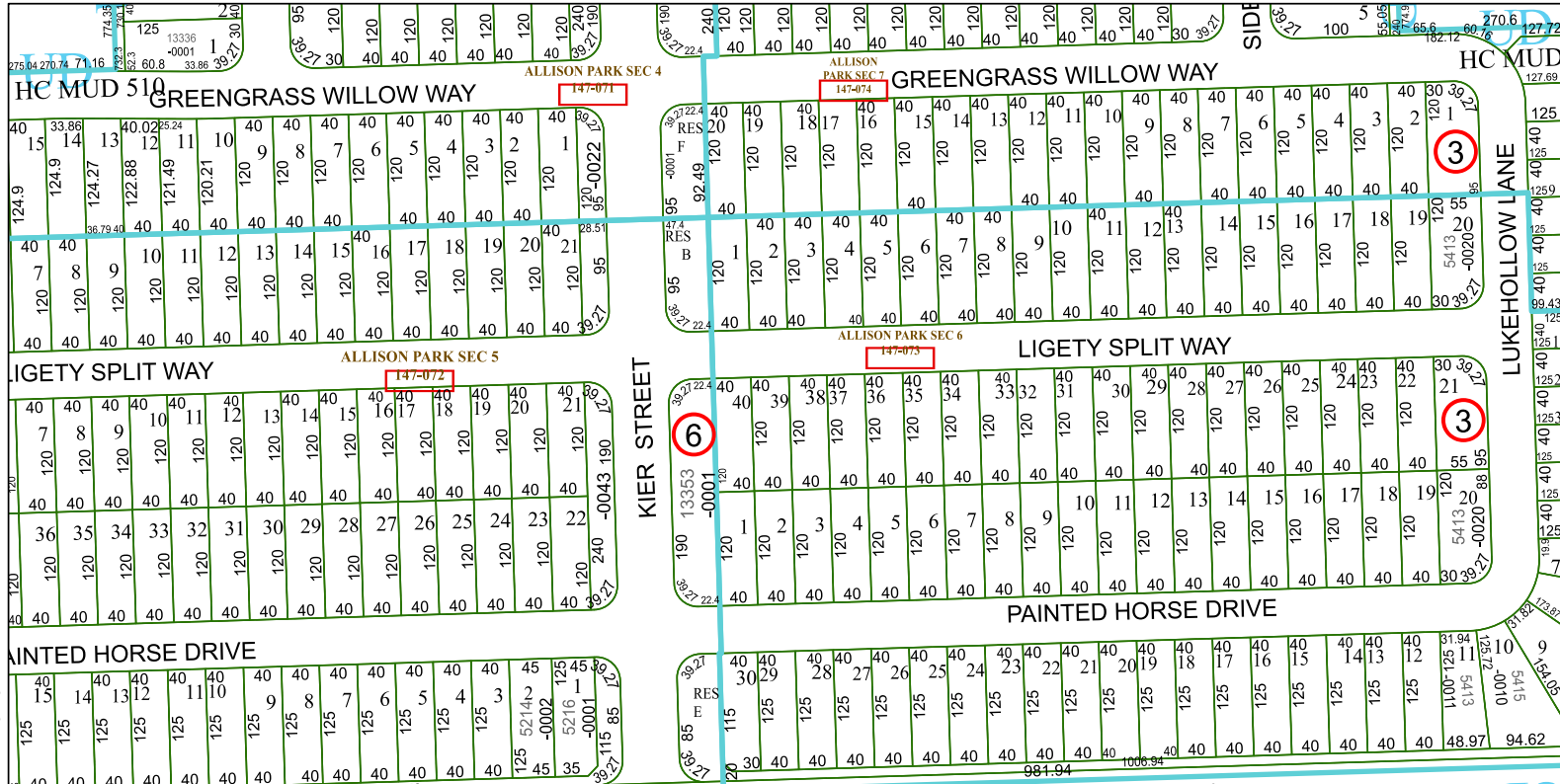
MAP LOCATION



## FACET 5551C1

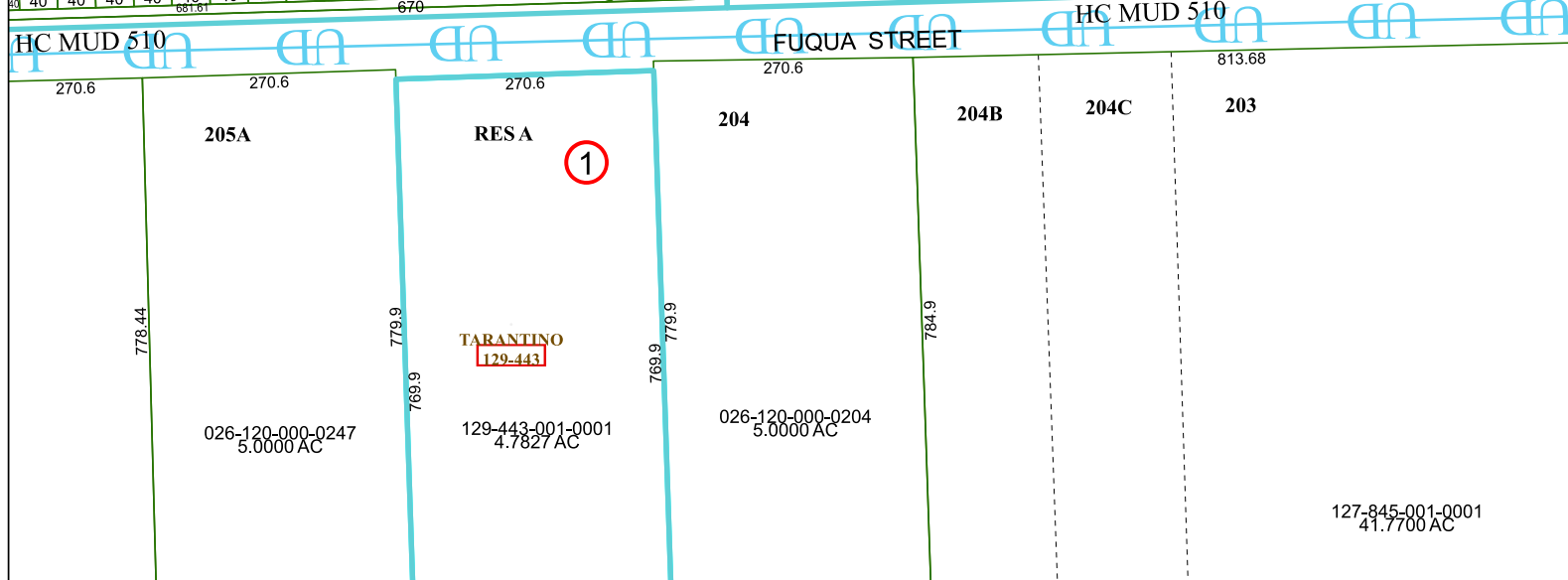
11	12	9	10	11
3	4	1	2	3
7	8	5	6	7

5551A9



5551C5

5451D4



127-845-001-0001  
41.7700 AC