

5551C2

5551C5

Harris Central Appraisal District



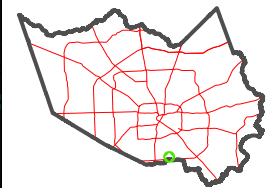
0 45 90 180 Feet

PUBLICATION DATE: 1/29/2024

Geospatial or map data maintained by the Harris Central Appraisal District is for informational purposes and may not have been prepared for or be suitable for legal, engineering, or surveying purposes. It does not represent an on-the-ground survey and only represents the approximate location of property boundaries.

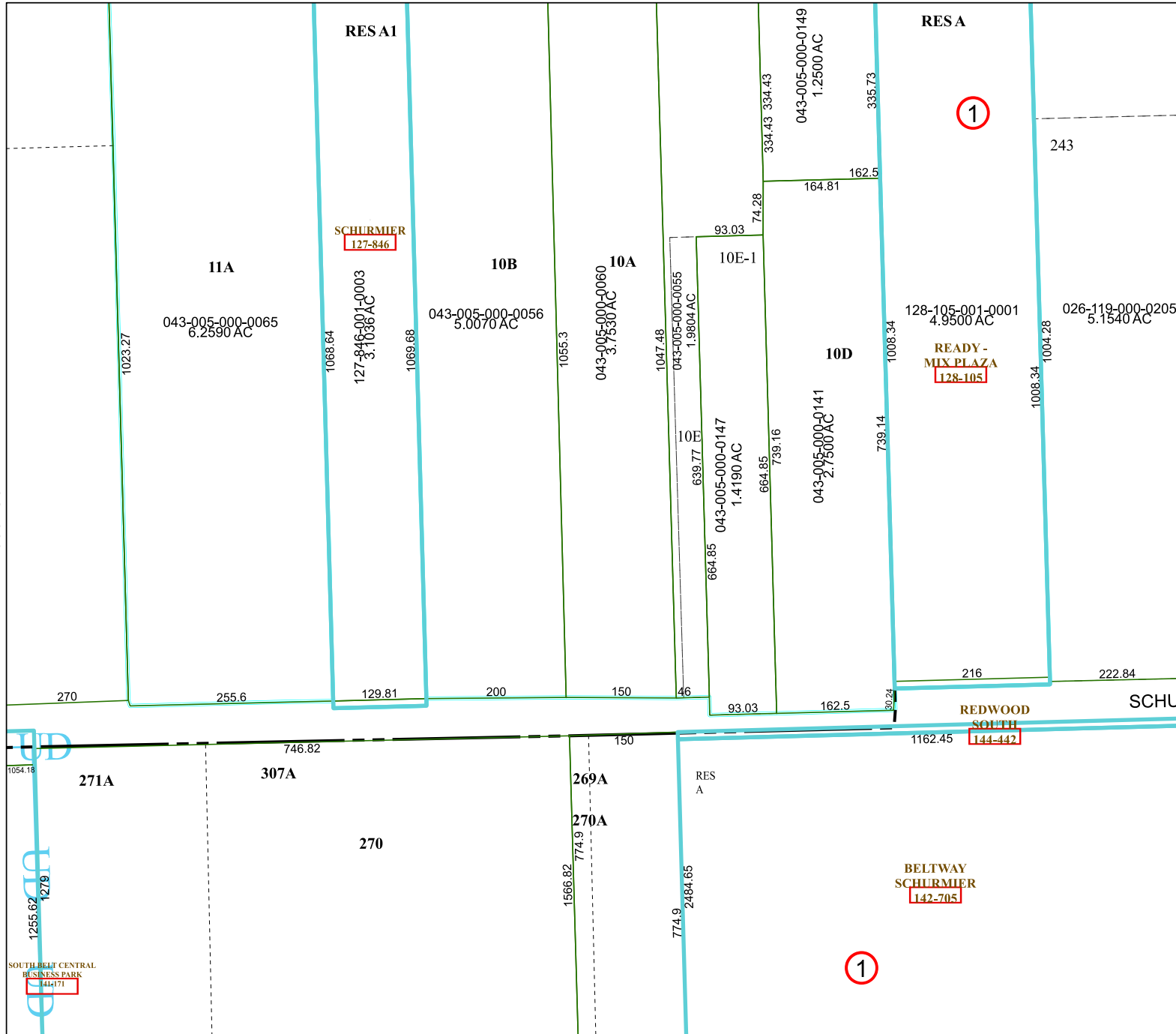


MAP LOCATION



FACET 5551C6

4	1	2	3	4
8	5	6	7	8
12	9	10	11	12



5551C10

5551C7