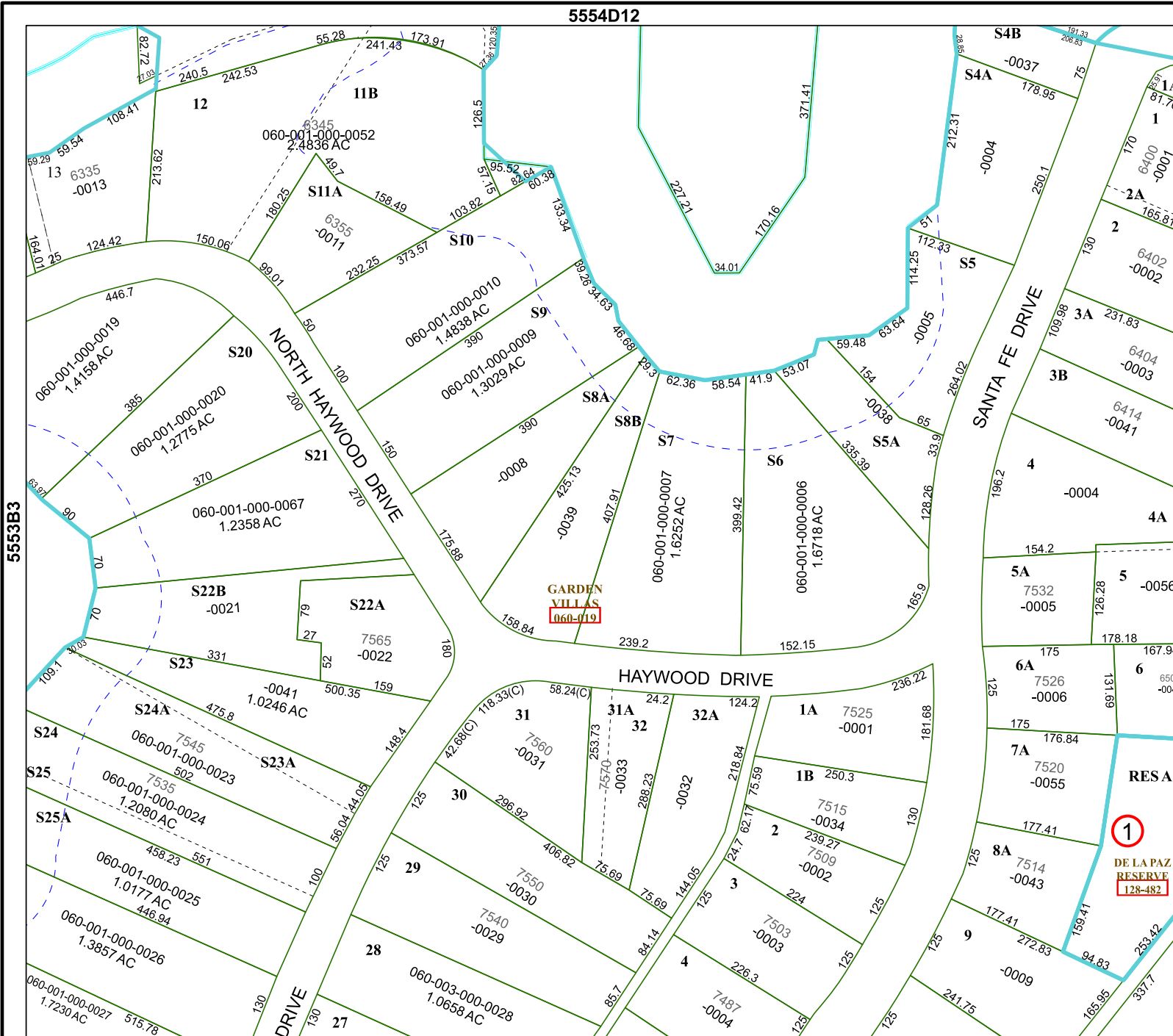


5554D12



5553B3

5553B8

# Harris Central Appraisal District



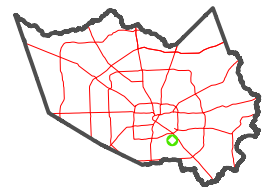
0 45 90 180 Feet

PUBLICATION DATE: 1/9/2023

Geospatial or map data maintained by the Harris Central Appraisal District is for informational purposes and may not have been prepared for or be suitable for legal, engineering, or surveying purposes. It does not represent an on-the-ground survey and only represents the approximate location of property boundaries.



## MAP LOCATION



# FACET 5553B4

1

DE LA PAZ RESERVE 128-482

10	11	12	9	10
2	3	4	1	2
6	7	8	5	6