

Harris Central Appraisal District

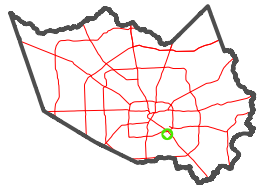


0 45 90 180 Feet

PUBLICATION DATE: 1/9/2023

Geospatial or map data maintained by the Harris Central Appraisal District is for informational purposes and may not have been prepared for or be suitable for legal, engineering, or surveying purposes. It does not represent an on-the-ground survey and only represents the approximate location of property boundaries.

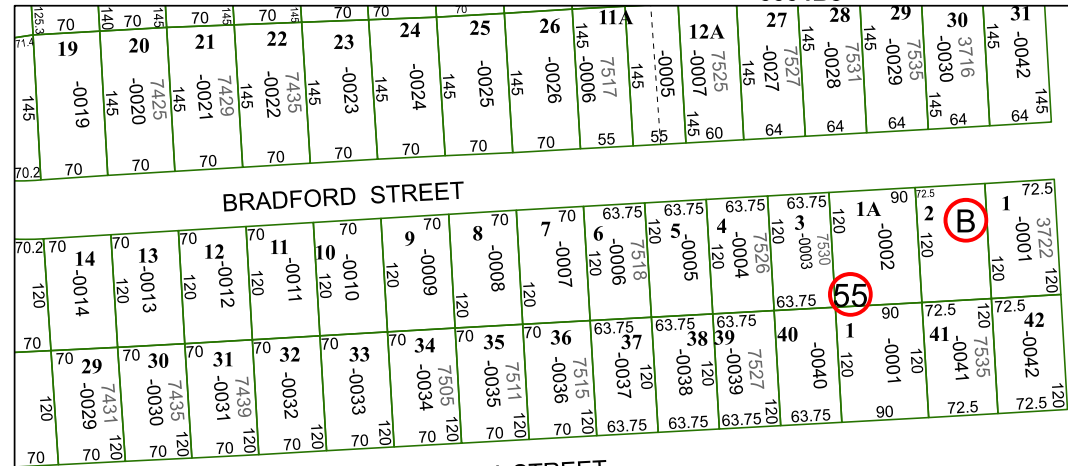
MAP LOCATION



FACET 5554B12

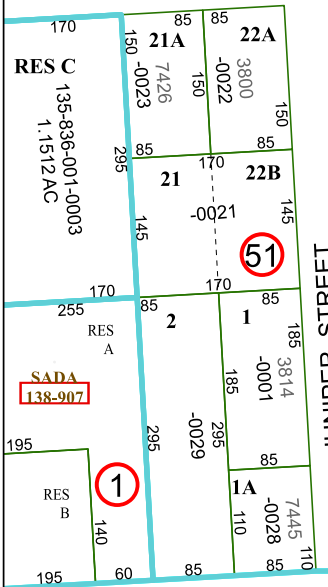
6	7	8	5	6
10	11	12	9	10
2	3	4	1	2

5554B8



KINGSLEY STREET

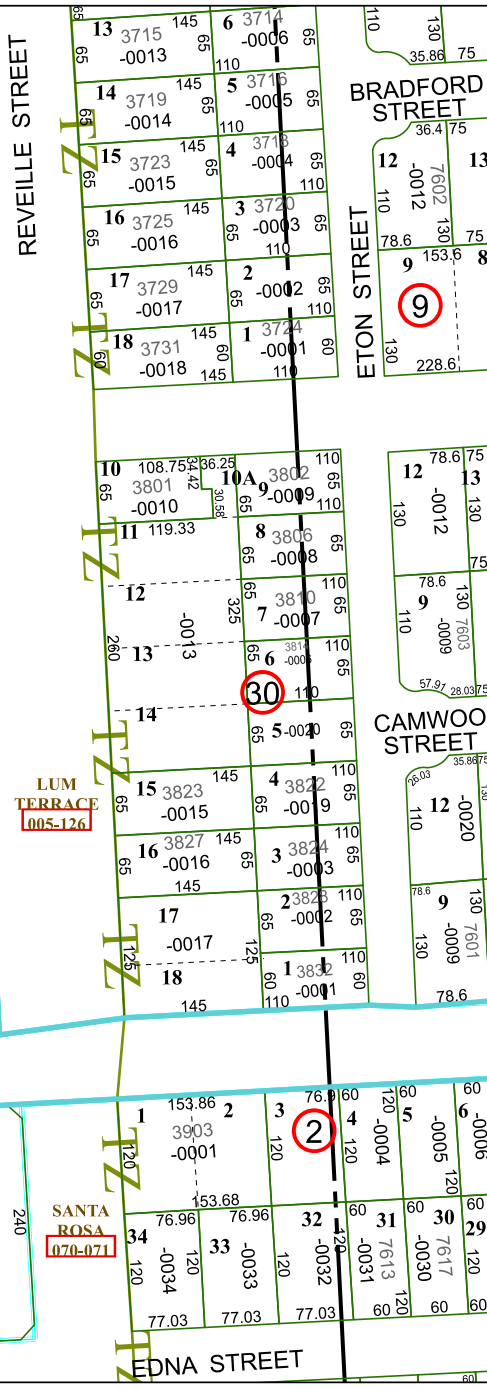
5554B11



JUNIPER STREET

PARK PLACE BOULEVARD

5554D4



REVELLE STREET

BRADFORD STREET

ETON STREET

CAMWOOD STREET

EDNA STREET

LUM TERRACE 1005-126

JACK IN THE BOX NO 644 126-909

SANTA ROSA 070-071

RES C 135-836-001-0003 1.1512 AC

SADA 138-907

NPV PLAZA 127-244 1.1513 AC

AMERICAS CENTER 126-519

SANTA ROSA COMMUNITY CENTER 070-072 1.1020 AC

RESA 126-908-001-0001 1.5910 AC

RESA 118-027-001-0001 1.2120 AC