

Harris Central Appraisal District

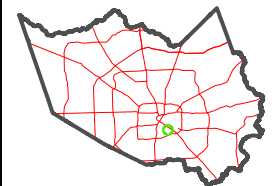


0 45 90 180 Feet

PUBLICATION DATE:
12/30/2023

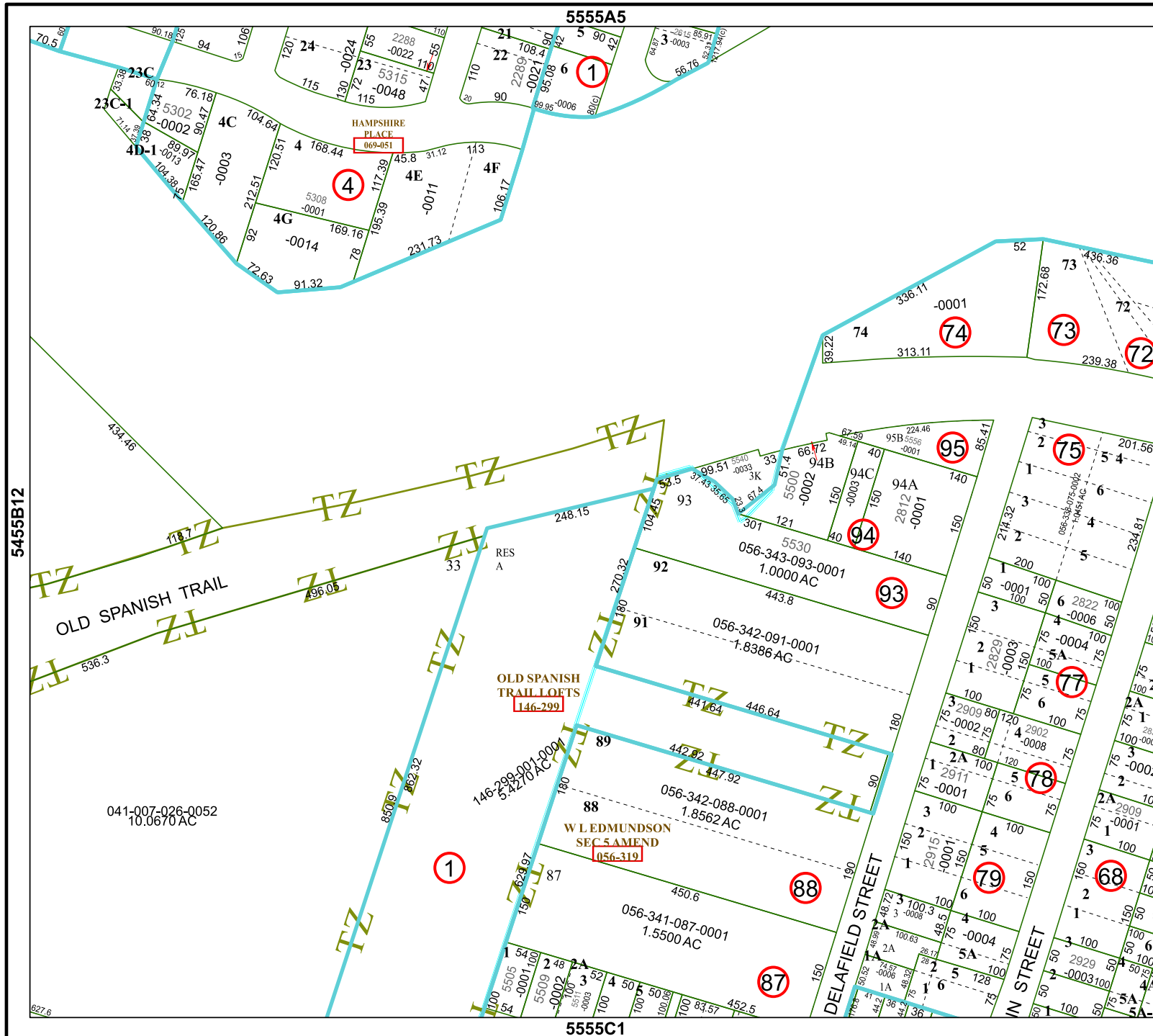
Geospatial or map data maintained by the Harris Central Appraisal District is for informational purposes and may not have been prepared for or be suitable for legal, engineering, or surveying purposes. It does not represent an on-the-ground survey and only represents the approximate location of property boundaries.

MAP LOCATION



FACET 5555A9

7	8	5	6	7
11	12	9	10	11
3	4	1	2	3



5455B12

5555A5

5555A10

5555C1

041-007-026-0052
10.0670 AC

OLD SPANISH TRAIL LOETS
146-299

W.L. EDMUNDSON
SEC 5 AMEND
056-319

88

87

95

94

93

75

74

77

76

78

79

72

73

71

70

RES A

1.8386 AC

1.8562 AC

1.5500 AC

1.0000 AC

1.5500 AC

1.8386 AC