

Harris Central Appraisal District

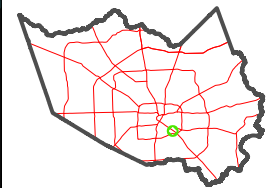


0 45 90 180 Feet

PUBLICATION DATE:
3/11/2024

Geospatial or map data maintained by the Harris Central Appraisal District is for informational purposes and may not have been prepared for or be suitable for legal, engineering, or surveying purposes. It does not represent an on-the-ground survey and only represents the approximate location of property boundaries.

MAP LOCATION



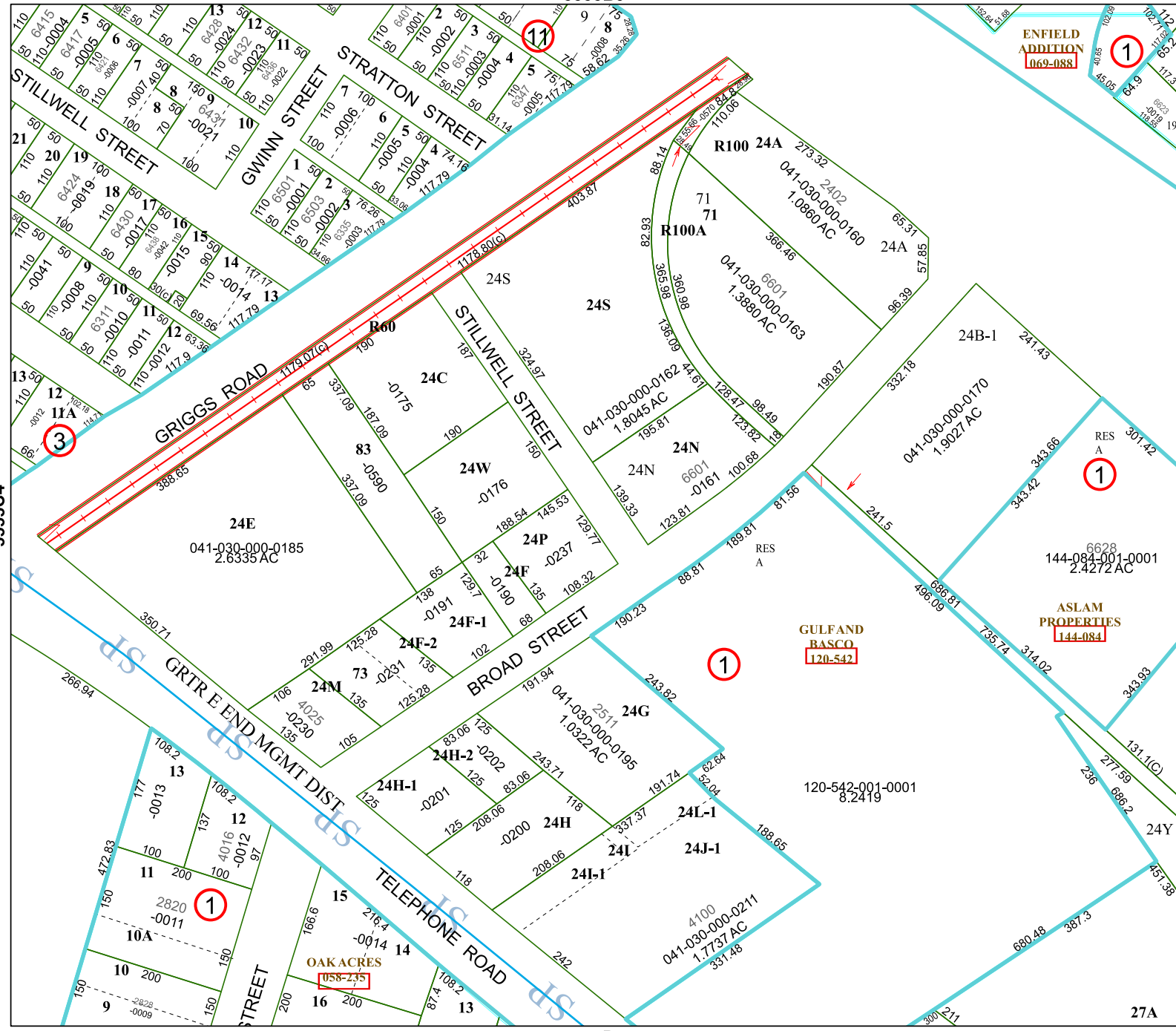
FACET 5555D1

11	12	9	10	11
3	4	1	2	3
7	8	5	6	7

5555B9

ENFIELD ADDITION
069-088

5555D5



5555C4

5555D2

