

Harris Central Appraisal District



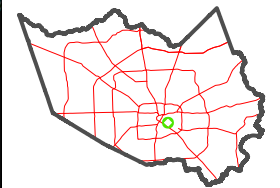
0 50 100 200 Feet

PUBLICATION DATE:
2/4/2026

Geospatial or map data maintained by the Harris Central Appraisal District is for informational purposes and may not have been prepared for or be suitable for legal, engineering, or surveying purposes. It does not represent an on-the-ground survey and only represents the approximate location of property boundaries.



MAP LOCATION

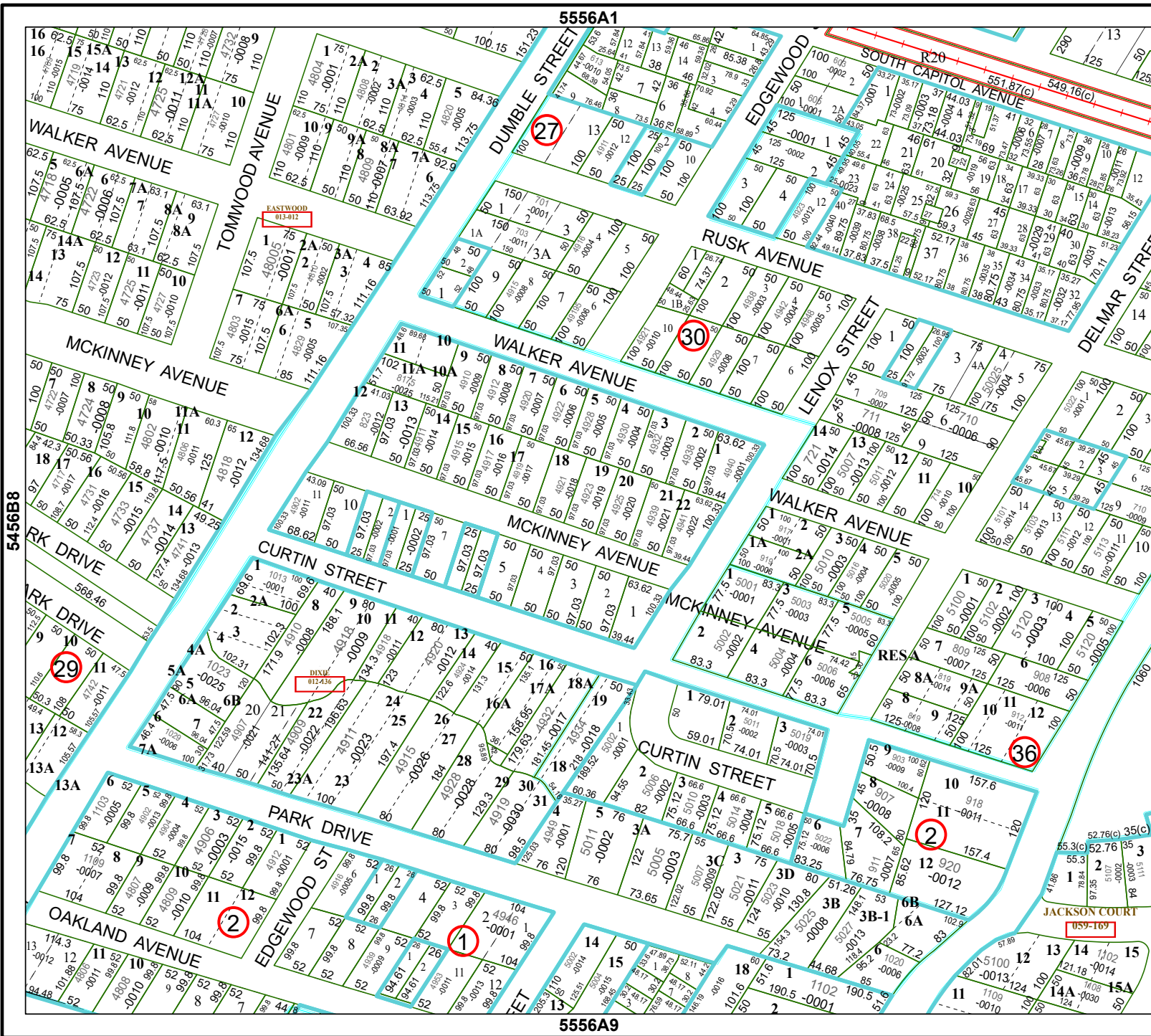


FACET 5556A5

3	4	1	2	3
7	8	5	6	7
11	12	9	10	11

5556A1

5556A9



5456B8

5556A6

JACKSON COURT
059-109