

# Harris Central Appraisal District

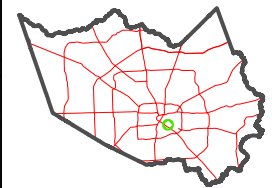


0 50 100 200 Feet

PUBLICATION DATE:  
12/16/2025

Geospatial or map data maintained by the Harris Central Appraisal District is for informational purposes and may not have been prepared for or be suitable for legal, engineering, or surveying purposes. It does not represent an on-the-ground survey and only represents the approximate location of property boundaries.

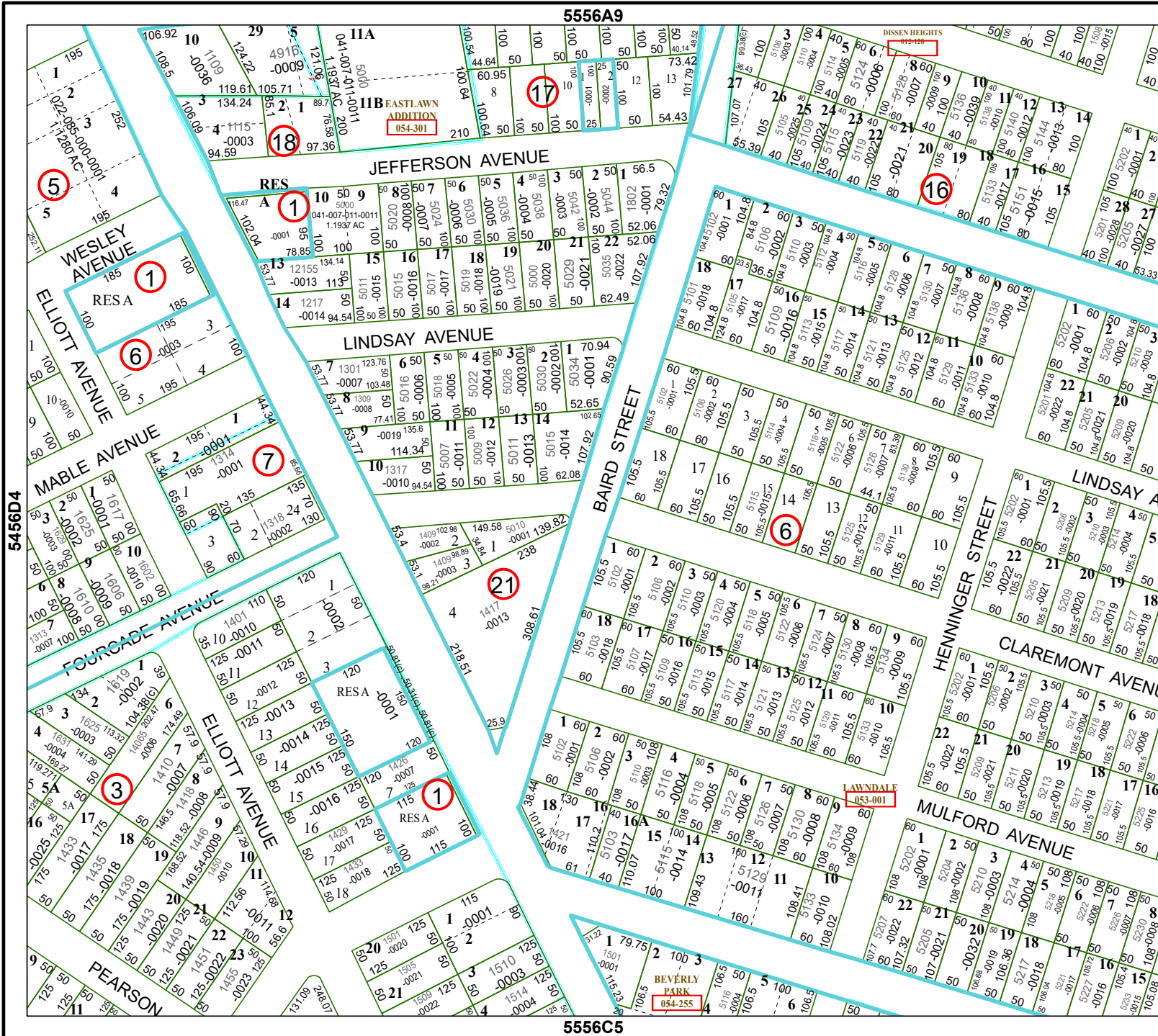
MAP LOCATION



## FACET

### 5556C1

11	12	9	10	11
3	4	1	2	3
7	8	5	6	7



5456D4

5556A9

5556C5

5556C2