

Harris Central Appraisal District



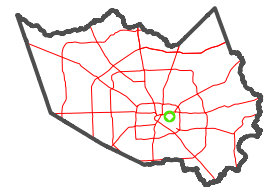
0 45 90 180 Feet

PUBLICATION DATE:
5/30/2024

Geospatial or map data maintained by the Harris Central Appraisal District is for informational purposes and may not have been prepared for or be suitable for legal, engineering, or surveying purposes. It does not represent an on-the-ground survey and only represents the approximate location of property boundaries.



MAP LOCATION

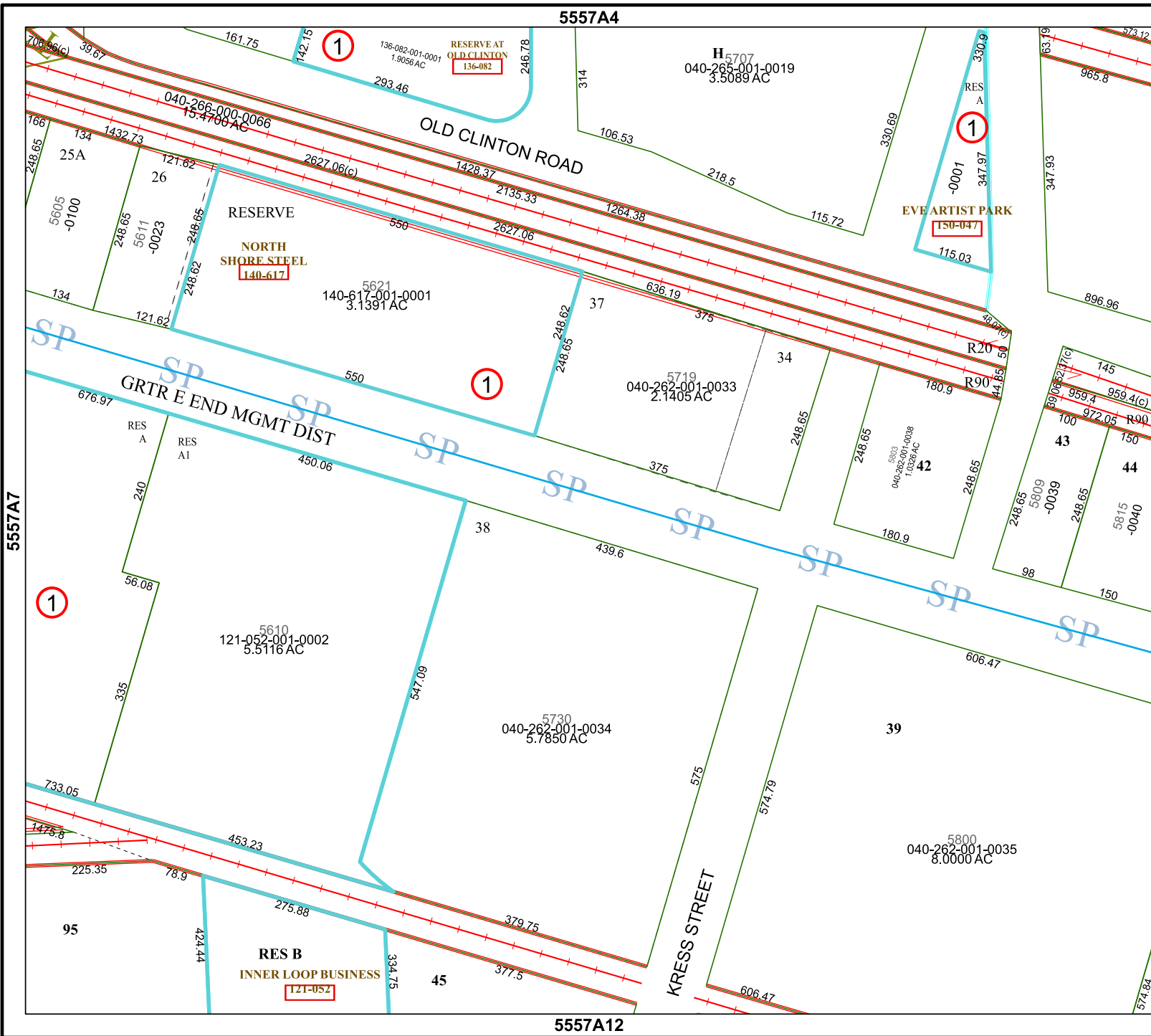


FACET 5557A8

2	3	4	1	2
6	7	8	5	6
10	11	12	9	10

5557A4

5557A12



5557A7

5557B5