

# Harris Central Appraisal District

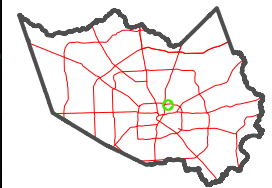


0 45 90 180 Feet

PUBLICATION DATE: 12/30/2023

Geospatial or map data maintained by the Harris Central Appraisal District is for informational purposes and may not have been prepared for or be suitable for legal, engineering, or surveying purposes. It does not represent an on-the-ground survey and only represents the approximate location of property boundaries.

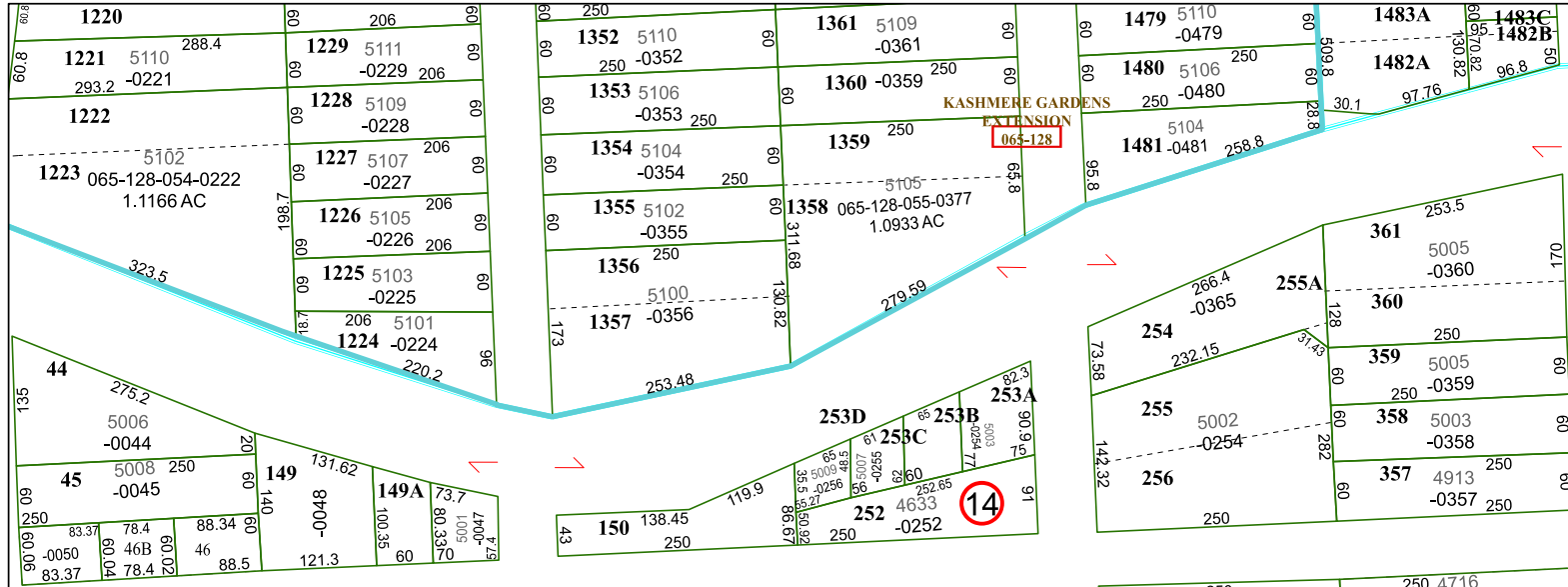
MAP LOCATION



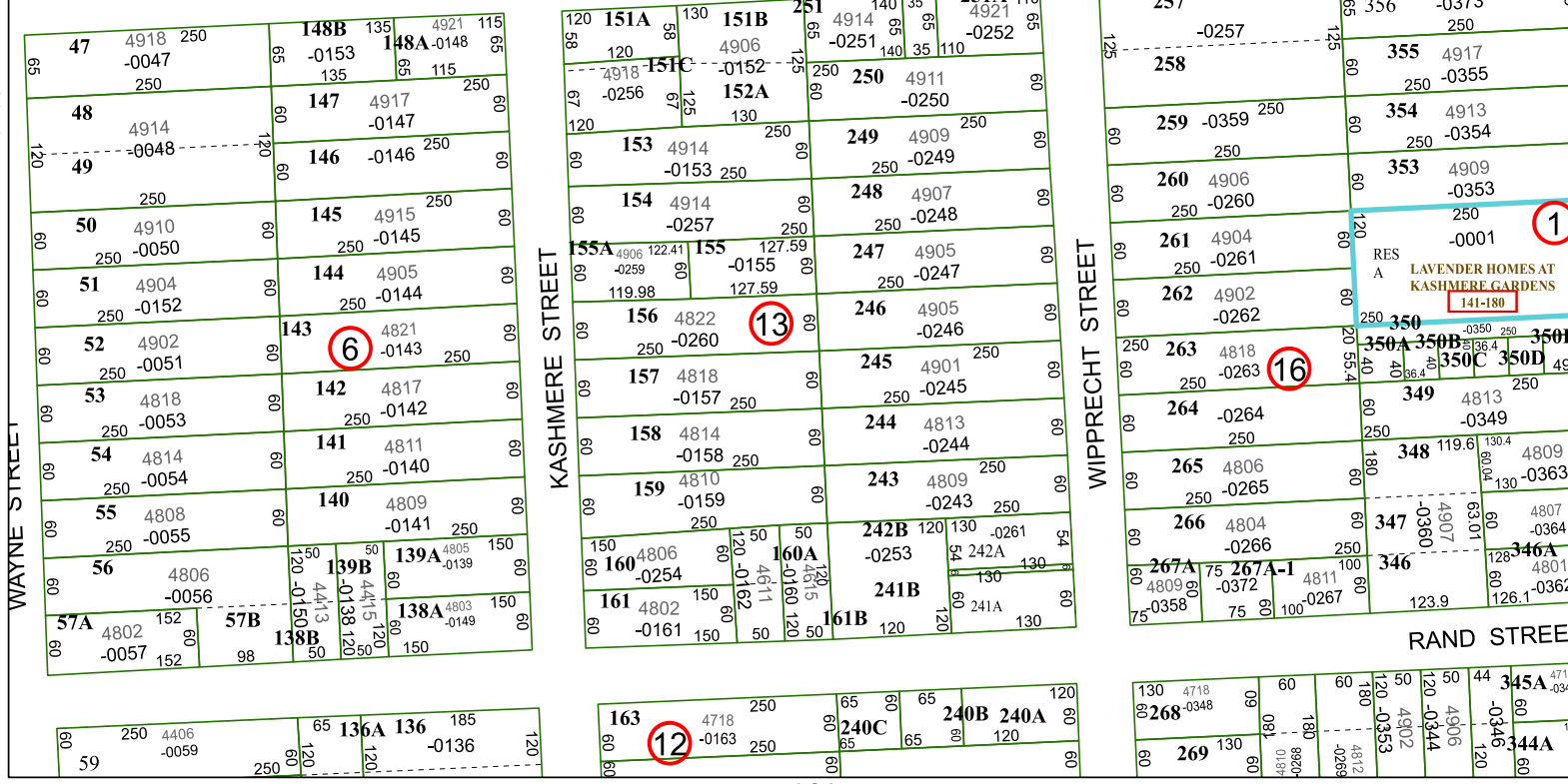
## FACET 5559A9

7	8	5	6	7
11	12	9	10	11
3	4	1	2	3

5559A5



5559C1



5459B12

WAYNE STREET

KASHMERE STREET

WIPPRECHT STREET

5559A10

RAND STREET