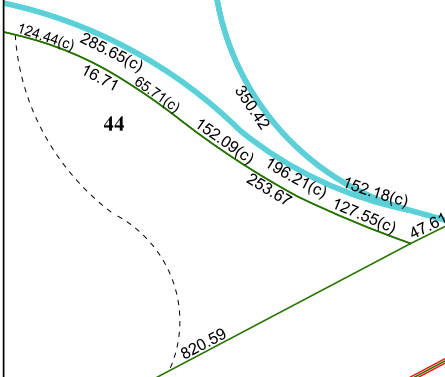


5559D3

GULF INDUSTRIAL PARK
106-345

CENTURY ASPHALT
LIBERTY ROAD SITE
136-704



946.7

8.8900 AC

1174.28(c)

755.04(c)

R15

-0301

2.0200 AC

R200

85.07(c)
47.68(c)

5559D6

16

041-070-000-0222
2.0200 AC

888

Harris Central Appraisal District



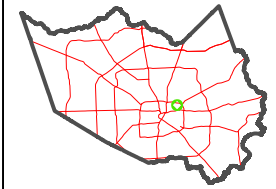
0 45 90 180 Feet

PUBLICATION DATE:
2/28/2024

Geospatial or map data maintained by the Harris Central Appraisal District is for informational purposes and may not have been prepared for or be suitable for legal, engineering, or surveying purposes. It does not represent an on-the-ground survey and only represents the approximate location of property boundaries.

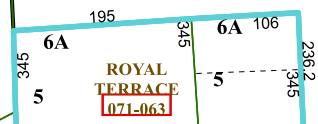


MAP LOCATION



FACET 5559D7

1	2	3	4	1
5	6	7	8	5
9	10	11	12	9



5559D11