

Harris Central Appraisal District

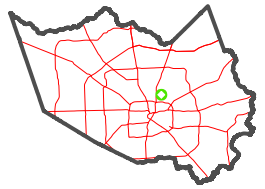


0 45 90 180 Feet

PUBLICATION DATE: 4/8/2024

Geospatial or map data maintained by the Harris Central Appraisal District is for informational purposes and may not have been prepared for or be suitable for legal, engineering, or surveying purposes. It does not represent an on-the-ground survey and only represents the approximate location of property boundaries.

MAP LOCATION

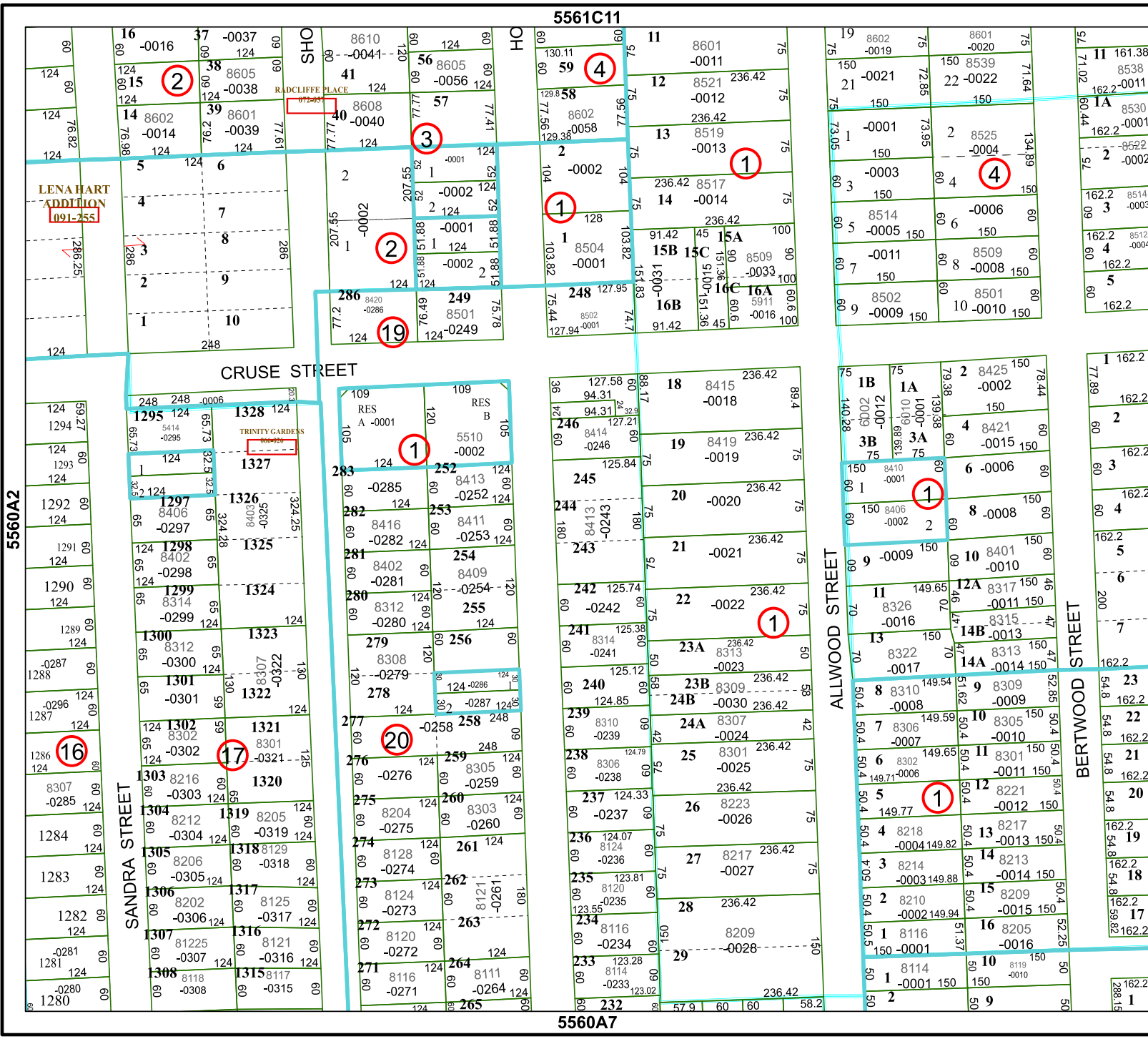


FACET 5560A3

9	10	11	12	9
1	2	3	4	1
5	6	7	8	5

5561C11

5560A7



5560A4

5560A2

5560A1

5560A0

5560A5